

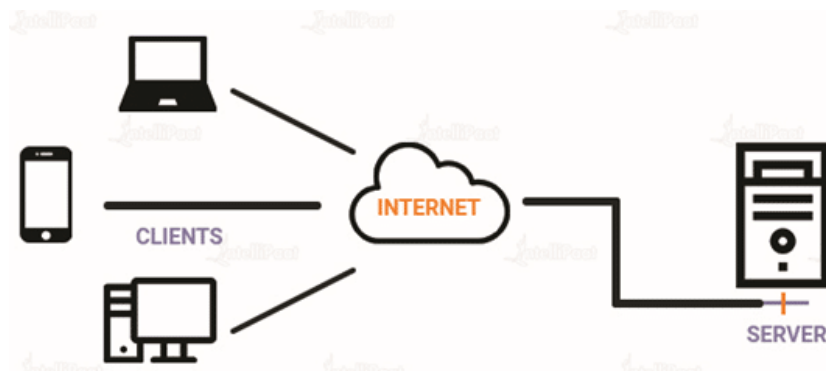


ASRockRACK TECHNICAL DOCUMENT (OCTOBER/2024)

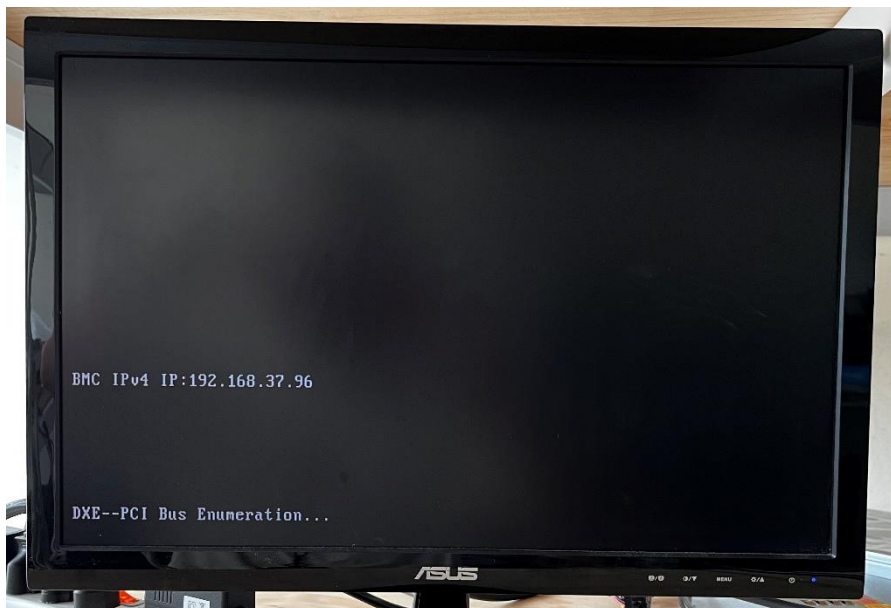
Q: How to remote install OS on AST2600 platform?

Preparation:

1. An IPMI-capable device (Client) to remotely manage and establish connection to the very system with AST2600 (Host).



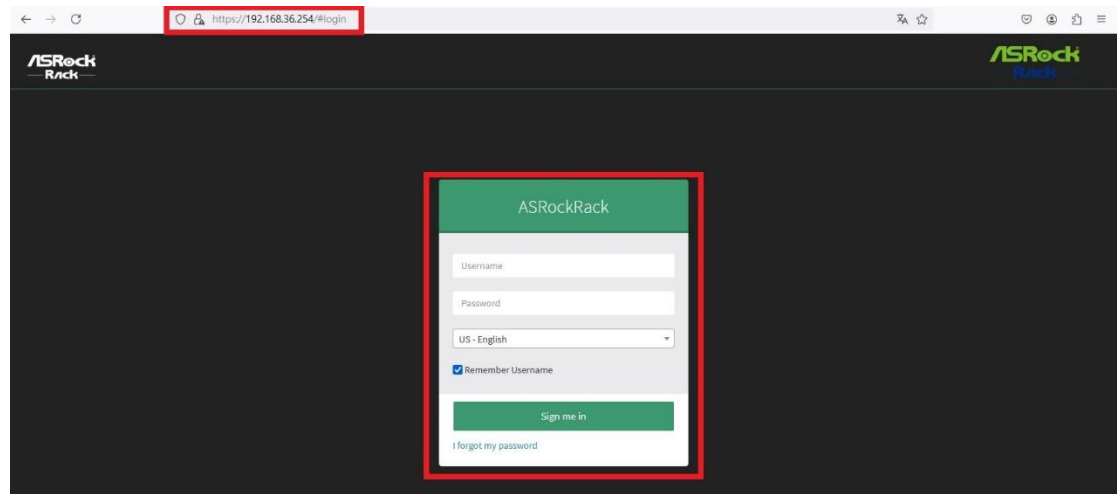
2. Find out the domain [IP address] of the host system by checking on the boot process.



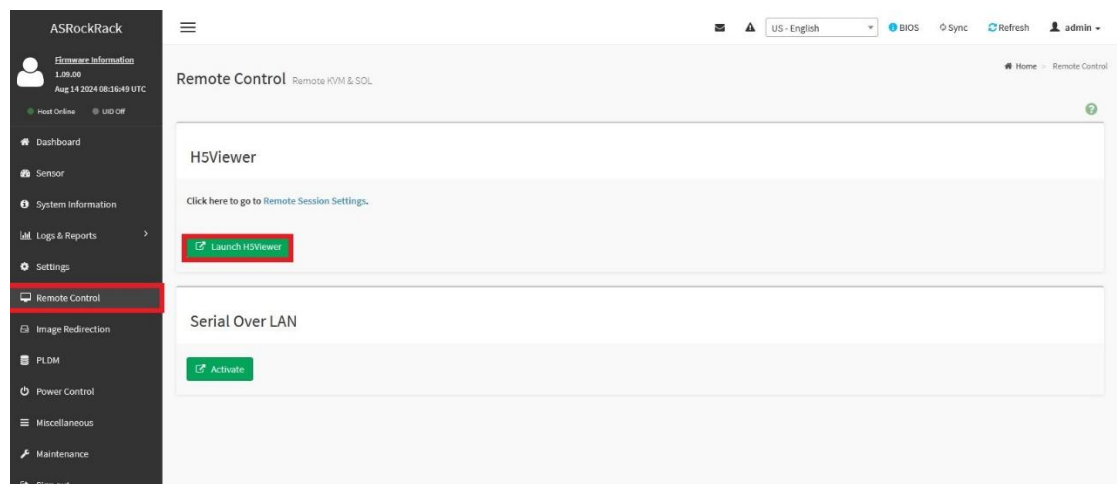
3. Make sure the host system has the correct LAN port (Dedicated IPMI) connected so that the client could access to it.

Step:

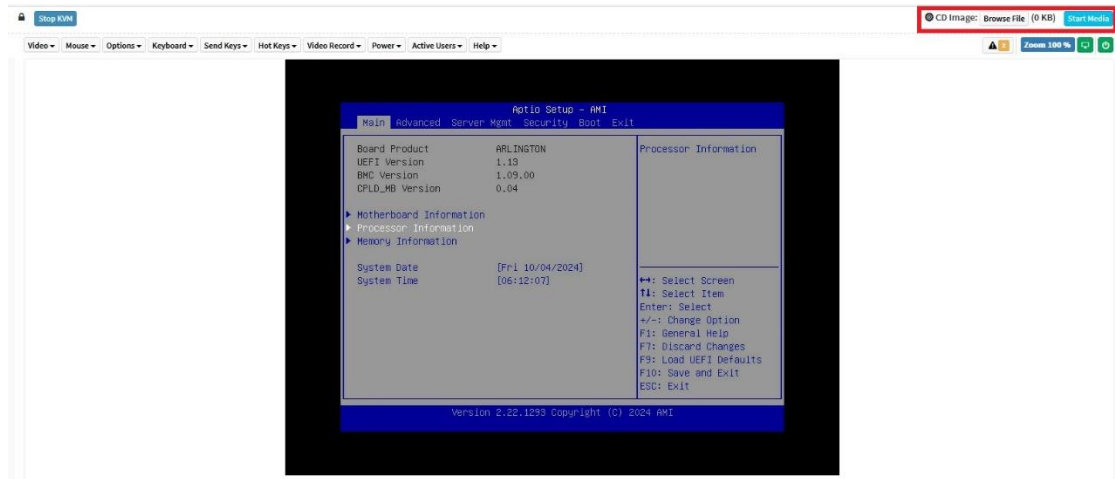
1. Access Web GUI using IE or chrome browser with the IP address, and log in using IPMI user under the right domain.



2. To access remote control, go "Remote Control", and click "Launch H5Viewer".

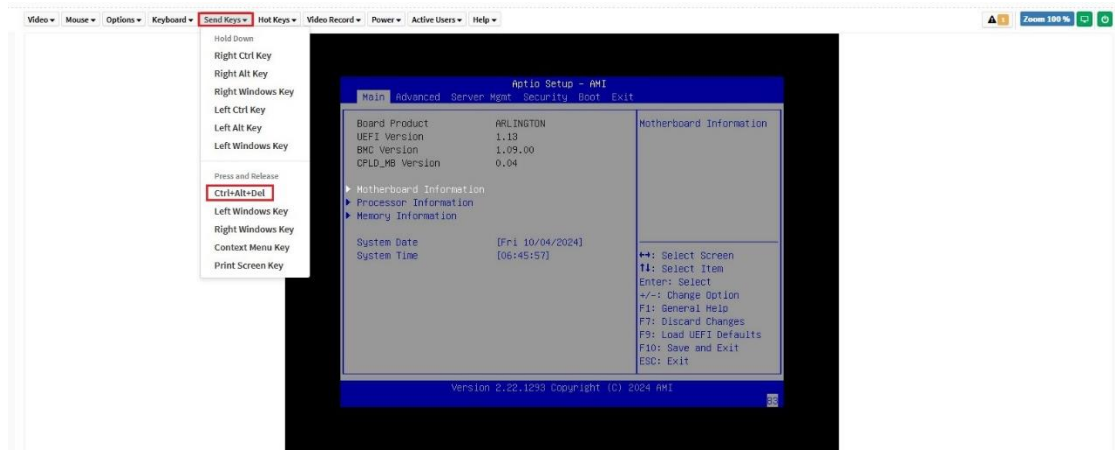


3. Click "Browse File" to choose the OS file you want to install, then click "Start Media".

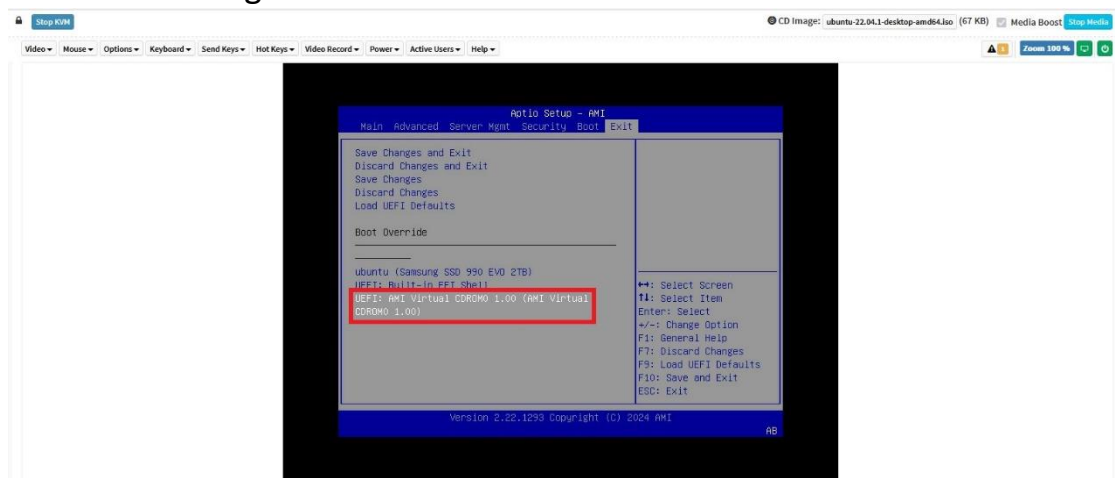


*You can tick “Media Boost” to accelerate the installing speed

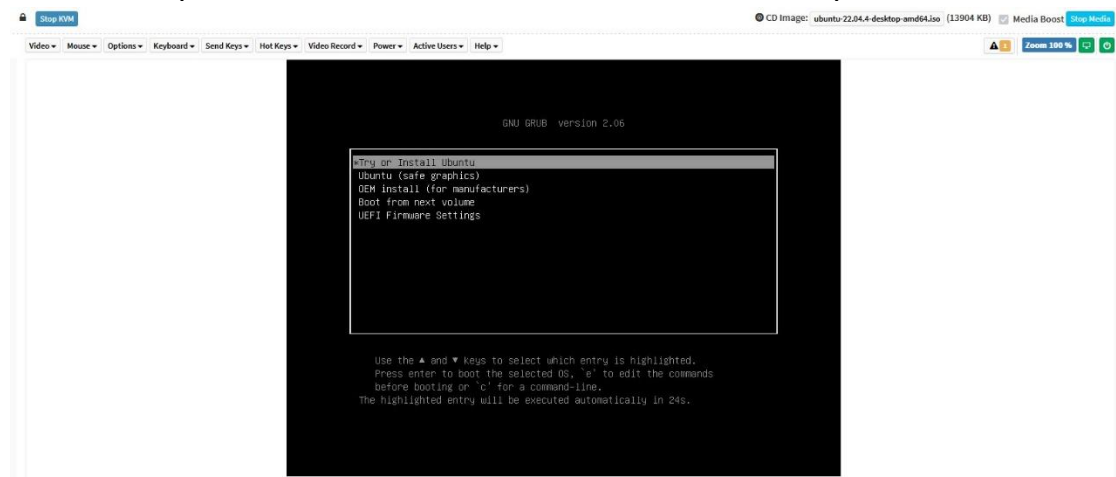
4. Reboot by “Send Keys => Ctrl+Alt+Del”, and go into BIOS.



5. In BIOS, move to “Exit” and click “UEFI OS (Virtual CDROM 1.00)” to start installing.



6. Follow the procedure and the installation shall be completed.



7. Install successfully

