

Intel Smart Response Technology Installation Guide

This motherboard supports Intel Smart Response Technology. You can find the UI setup instruction and the step by step instructions below.

UI setup instruction:

1. Complete initial system setup, including installing the OS to a RAID mode system, then install all required drivers, including RST storage driver version 10.5 or later.
2. You MUST have both the HDD you intend to accelerate AND the SSD in system at this point!
3. Boot system to desktop, open RST GUI from either Start Menu or by double-clicking RST Storage icon in Icon tray, lower right-hand corner of the screen.
4. Once open, click on the "Enable Acceleration" button on the GUI panel.
5. When pop-up menu appears, chose which SSD you wish to use as the Cache device, which HDD you wish to Accelerate, if you want to use the full SSD as Cache device or only 20GB, and if you want to use Enhanced or Maximized Mode.
6. For all performance testing, chose "Maximized" mode.
7. After clicking OK button, SRT will enable automatically, and the RST GUI will refresh to show the newly accelerated system configuration.

* Intel® will update the new version RST driver in the near future. For the new version RST driver, please check our website for the latest information: <http://www.asrock.com>

* Before you use RST function, you just need to set the UEFI option "SATA Mode" to [RAID Mode]. It is not necessary to build RAID 0 or RAID 1 in RAID ROM.

Enabling Intel Smart Response Technology Setup through RST GUI :

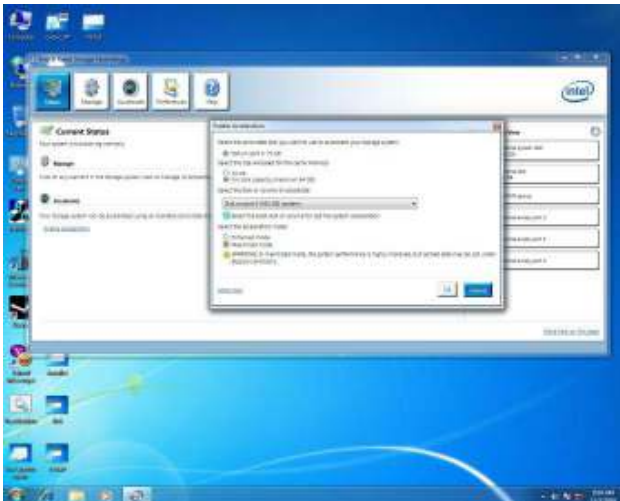
1.



Open RST GUI, either double-click on tray icon or open through Start menu.

Click on “Enable Acceleration” button on front panel.

2.



Select options for your personal preferences:

20GB or Full Disk Capacity for Cache Volume.

Select which disk/volume you want to Accelerate.

Enhanced or Maximized Mode.

Click “OK” button.

3.



Your GUI window will now change to look like this.

The “System View” area (Green) now shows the SSD broken up as a Cache Volume and the spare capacity volume (Yellow) if applicable.

Also, the Accelerated disk now has an “Accelerated” label and icon (Blue).

Reboot the system and cache setup is complete.

Disabling Intel Smart Response Technology Setup through RST GUI :

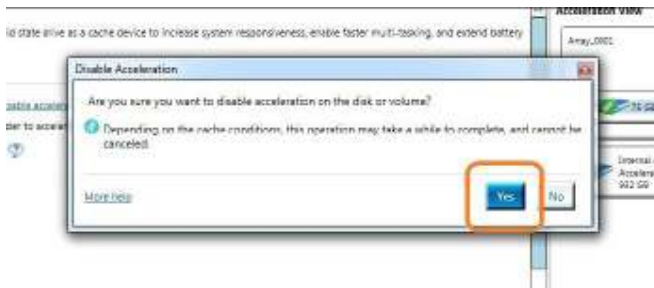
1.



Open RST GUI and click on the “Accelerate” tab.

Click on the “Disable Acceleration” button.

2.

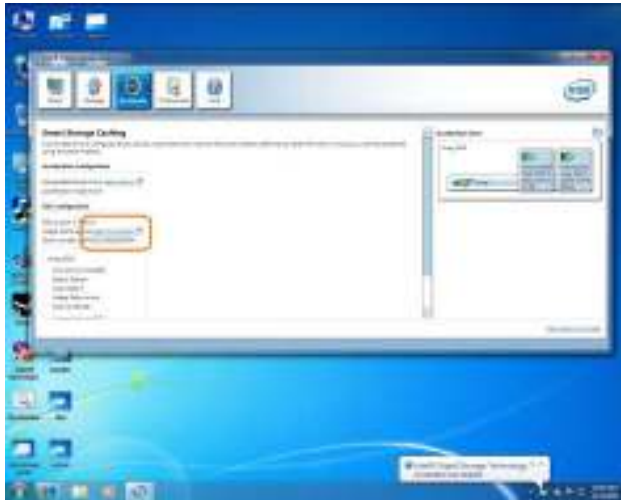


A pop-up window will appear, click “Yes” RST Cache is now DISABLED.

Smart Response Technology is now DISABLED and all data is guaranteed to be written to the HDD. This could take a few seconds or even a few minutes depending on how much modified data there was.

Resetting SSD to “Available”:

1.

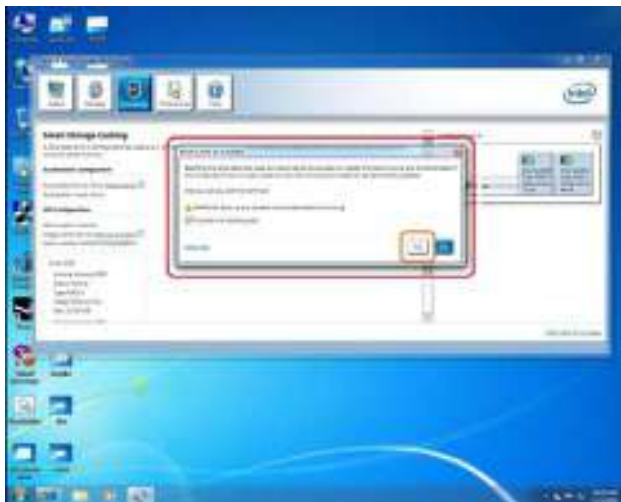


The “Accelerate” tab window will now look like this. Note that the SSD is still divided into a Cache and Spare Cap Volume.

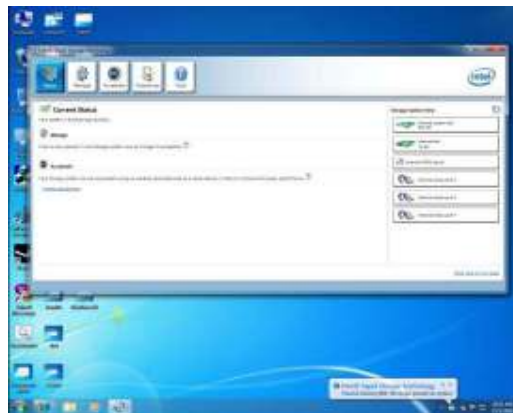
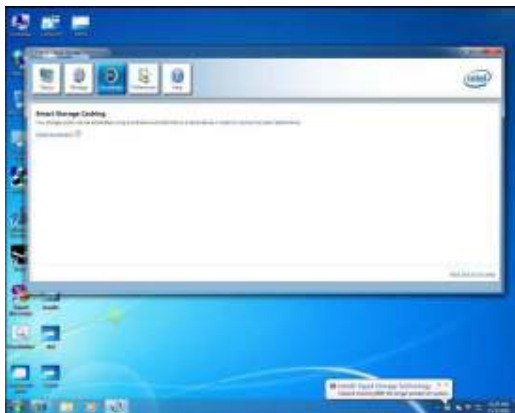
To reset SSD to a non-Cache-disk state, Click the “Reset to Available” button (Orange). Resetting SSD to “Available”.

WARNING!

Resetting SSD to Available will delete all data on the Spare Capacity Volume!



The SSD is now reset to Available.



The SSD can now be used as a normal storage device, or you can also re-enable Acceleration through the normal enable process.