

AMD RAID Installation Guide

1.	AMD BIOS RAID Installation Guide	2
1.1	Introduction to RAID	2
1.2	RAID Configurations Precautions	3
1.3	Installing Windows OS With RAID Functions	3
1.3.1	Installing Windows XP / XP 64-bit With RAID Functions	3
1.3.2	Installing Windows 7 / 7 64-bit / Vista / Vista 64-bit With RAID Functions	4
1.4	Create Disk Array	5
2.	AMD Windows RAID Installation Guide	10
2.1	Components of RAIDXpert Installation Software	10
2.2	Browser Support	10
2.3	Installing RAIDXpert	10
2.4	Logging into RAIDXpert	13
2.5	Regular Connection.....	13
2.6	Secure Connection.....	13
2.7	Creating a New Logical Drive	14
2.8	Connecting to RAIDXpert from the Internet	17
2.9	Running RAIDXpert without Network Connection	17

1. AMD BIOS RAID Installation Guide

AMD BIOS RAID Installation Guide is an instruction for you to configure RAID functions by using the onboard FastBuild BIOS utility under BIOS environment. After you make a SATA / SATAII driver diskette, press <F2> to enter BIOS setup to set the option to RAID mode by following the detailed instruction of the "User Manual" in our support CD or "Quick Installation Guide", then you can start to use the onboard FastBuild BIOS utility to configure RAID.

1.1 Introduction to RAID

The term "RAID" stands for "Redundant Array of Independent Disks", which is a method combining two or more hard disk drives into one logical unit. For optimal performance, please install identical drives of the same model and capacity when creating a RAID set.

RAID 0 (Data Striping)

RAID 0 is called data striping that optimizes two identical hard disk drives to read and write data in parallel, interleaved stacks. It will improve data access and storage since it will double the data transfer rate of a single disk alone while the two hard disks perform the same work as a single drive but at a sustained data transfer rate.

WARNING!!

Although RAID 0 function can improve the access performance, it does not provide any fault tolerance. Hot-Plug any HDDs of the RAID 0 Disk will cause data damage or data loss.

RAID 1 (Data Mirroring)

RAID 1 is called data mirroring that copies and maintains an identical image of data from one drive to a second drive. It provides data protection and increases fault tolerance to the entire system since the disk array management software will direct all applications to the surviving drive as it contains a complete copy of the data in the other drive if one drive fails.

RAID 10 (Stripe Mirroring)

RAID 0 drives can be mirrored using RAID 1 techniques, resulting in a RAID 10 solution for improved performance plus resiliency. The controller combines the performance of data striping (RAID 0) and the fault tolerance of disk mirroring (RAID 1). Data is striped across multiple drives and duplicated on another set of drives.

JBOD

JBOD stands for "Just a Bunch of Disks" and normally refers to one or more physical drives working independently. The AMD SB750 controller offers the added feature of concatenation, where the capacity of multiple drives is added together. When one drive is full, the data is saved to the next drive automatically. As independent physical drives, JBOD does not offer the performance or security advantages of RAID logical drives. However, in RAIDXpert,

you create, manage, and delete a JBOD the same as a logical drive. You can designate from two to four physical drives with online capacity expansion. If you attach a single physical drive that was previously partitioned, RAIDXpert will recognize it as a JBOD. However, RAIDXpert does not allow you to create a single-drive JBOD.

RAID Ready

RAID Ready arranges individual physical drives the same as if they were attached to the PC's motherboard controller. The advantage is that the AMD SB750 Controller can accommodate up to four physical drives, more than most PC motherboards. As a single physical drive, RAID Ready does not offer the performance or security advantages of other RAID logical drives. However, you can create a backup drive by: Inserting an unformatted physical drive or designating an installed physical drive. In RAIDXpert, you create, manage, and delete a RAID Ready the same as a logical drive. A RAID Ready logical drive has only one physical drive. You can designate from one to four of your physical drives as RAID Ready.

1.2 RAID Configurations Precautions

1. Please use two new drives if you are creating a RAID 0 (striping) array for performance. It is recommended to use two SATA drives of the same size. If you use two drives of different sizes, the smaller capacity hard disk will be the base storage size for each drive. For example, if one hard disk has an 80GB storage capacity and the other hard disk has 60GB, the maximum storage capacity for the 80GB-drive becomes 60GB, and the total storage capacity for this RAID 0 set is 120GB.
2. You may use two new drives, or use an existing drive and a new drive to create a RAID 1 (mirroring) array for data protection (the new drive must be of the same size or larger than the existing drive). If you use two drives of different sizes, the smaller capacity hard disk will be the base storage size. For example, if one hard disk has an 80GB storage capacity and the other hard disk has 60GB, the maximum storage capacity for the RAID 1 set is 60GB.
3. Please verify the status of your hard disks before you set up your new RAID array.

WARNING!!

Please backup your data first before you create RAID functions. In the process you create RAID, the system will ask if you want to "Clear Disk Data" or not. It is recommended to select "Yes", and then your future data building will operate under a clean environment.

1.3 Installing Windows OS With RAID Functions

If you want to install Windows OS on a RAID disk composed of 2 or more SATA / SATAII HDDs with RAID functions, please follow below procedures according to the OS you install.

1.3.1 Installing Windows XP / XP 64-bit With RAID Functions

If you want to install Windows XP or Windows XP 64-bit on a RAID disk composed of 2 or more SATA / SATAII HDDs with RAID functions, please follow below steps.

STEP 1: Set up BIOS.

- A. Enter BIOS SETUP UTILITY → Advanced screen → Storage Configuration.
- B. Set the "SATA Operation Mode" option to [RAID].

STEP 2: Make a SATA / SATAII driver diskette.

- A. Insert the ASRock Support CD into your optical drive to boot your system.
- B. During POST at the beginning of system boot-up, press <F11> key, and then a window for boot devices selection appears. Please select CD-ROM as the boot device.
- C. When you see the message on the screen, "Do you want to generate Serial ATA driver diskette [Y/N]?", press <Y>.
- D. Then you will see these messages,
Please insert a blank formatted diskette into floppy drive A: press any key to start
Please insert a floppy diskette into the floppy drive, and press any key.
- E. The system will start to format the floppy diskette and copy SATA / SATAII drivers into the floppy diskette.

STEP 3: Use "RAID Installation Guide" to set RAID configuration.

Before you start to configure RAID function, you need to check this RAID installation guide for proper configuration. Please refer to the BIOS RAID installation guide part in this document for details.

STEP 4: Install Windows XP / XP 64-bit OS on your system.

After making a SATA / SATAII driver diskette and set RAID configuration, you can start to install Windows XP / XP 64-bit on your system. At the beginning of Windows setup, press F6 to install a third-party RAID driver. When prompted, insert the SATA / SATAII driver diskette containing AMD RAID driver. After reading the floppy disk, the driver will be presented. Select your required driver to install according to the OS you install. (Select "AMD AHCI Compatible RAID Controller-x86 platform" for Windows XP, or "AMD AHCI Compatible RAID Controller-x64 platform" for Windows XP 64-bit.)

NOTE.

If you install Windows XP / Windows XP 64-bit on IDE HDDs and want to manage (create, convert, delete, or rebuild) RAID functions on SATA / SATAII HDDs, you still need to set up "SATA Operation Mode" to [RAID] first. Then, please set the RAID configuration by using the Windows RAID installation guide in this document for details.

1.3.2 Installing Windows 7 / 7 64-bit / Vista / Vista 64-bit With RAID Functions

If you want to install Windows 7 / 7 64-bit / Vista / Vista 64-bit on a RAID disk composed of 2 or more SATA / SATAII HDDs with RAID functions, please follow below steps.

STEP 1: Set up BIOS.

- A. Enter BIOS SETUP UTILITY → Advanced screen → Storage Configuration.
- B. Set the "SATA Operation Mode" option to [RAID].

STEP 2: Use "RAID Installation Guide" to set RAID configuration.

Before you start to configure RAID function, you need to check this RAID installation guide for proper configuration.

Please refer to the BIOS RAID installation guide part in this document for details.

STEP 3: Install Windows 7 / 7 64-bit / Vista / Vista 64-bit OS on your system.

Insert the Windows 7 / 7 64-bit / Vista / Vista 64-bit optical disk into the optical drive to boot your system, and follow the instruction to install Windows 7 / 7 64-bit / Vista / Vista 64-bit OS on your system. When you see "Where do you want to install Windows?" page, please insert the ASRock Support CD into your optical drive, and click the "Load Driver" button on the left on the bottom to load the AMD RAID drivers. AMD RAID drivers are in the following path in our Support CD:

..\I386 (For Windows 7 / Vista OS)

..\AMD64 (For Windows 7 64-bit / Vista 64-bit OS)

After that, please insert Windows 7 / 7 64-bit / Vista / Vista 64-bit optical disk into the optical drive again to continue the installation.

NOTE1.

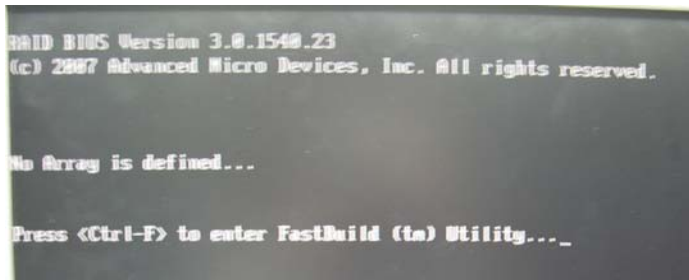
If you install Windows 7 / 7 64-bit / Vista / Vista 64-bit on IDE HDDs and want to manage (create, convert, delete, or rebuild) RAID functions on SATA / SATAII HDDs, you still need to set up "SATA Operation Mode" to [RAID] first. Then, please set the RAID configuration by using the Windows RAID installation guide in this document for details.

NOTE2.

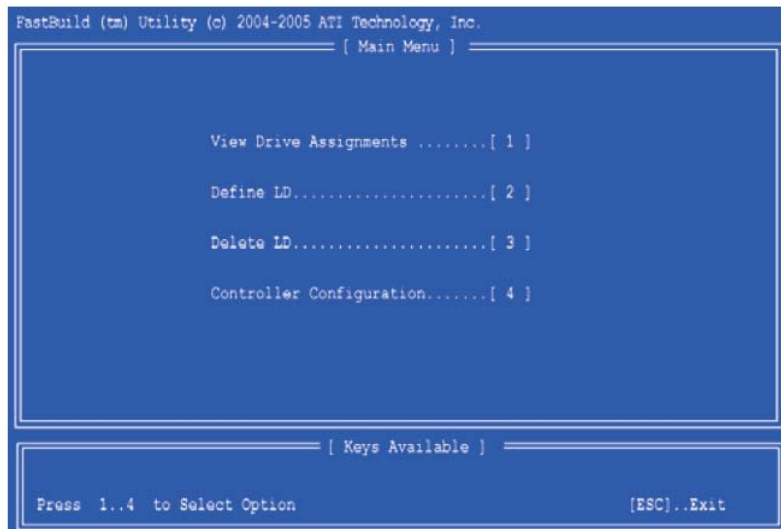
Currently, if you install Windows 7 / 7 64-bit / Vista / Vista 64-bit on IDE HDDs and there are no SATA / SATAII device used, please set up "SATA Operation Mode" to [non-RAID] in BIOS.

1.4 Create Disk Array

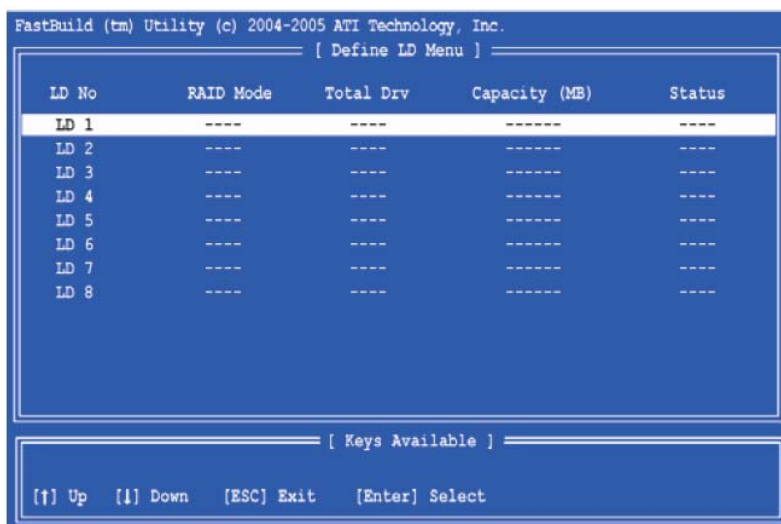
Power on your system. If this is the first time you have booted with the disk drives installed, the AMD onboard BIOS will display the following screen.



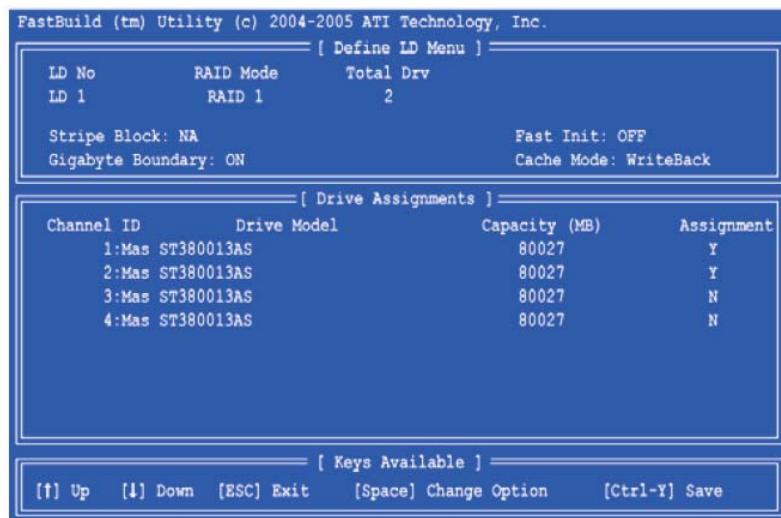
Press <Ctrl+F> keys, then the FastBuild Utility Main Menu appears.



Press 2 on the Main Menu screen to display the Define LD Menu.



Press the arrow keys to highlight a logical drive number you want to define and press <Enter> to select it. The Define LD Menu for the logical drive number you selected will next appear.



Choose the RAID level you want. In the Define LD Menu section, press the spacebar to cycle through logical drive types, including RAID 0, RAID 1, RAID Ready, JBOD and RAID 10.

WARNING!!

While you are allowed to use any available RAID level for your bootable logical drive, it is recommended to use RAID 1 for most applications.

Press the arrow key to move to Disk Assignments. Press the spacebar to toggle between N and Y for each available drive. Y means this disk drive will be assigned to the logical drive. Assign the appropriate number of disk drives to your logical drive. Then press <Ctrl-Y> to save your logical drive configuration. You have the option of using all of the disk drive capacity for one logical drive or allocating a portion to a second logical drive.

Press Ctrl-Y to Modify Array Capacity or press any other key to use maximum capacity...

Choose one of the following actions:

1. **Use the full capacity of the disk drives for a single logical drive:** Please read "One Logical Drive" below.
2. **Split the disk drives among two logical drives:** Please read "Two Logical Drives" below.

One Logical Drive

After selecting the logical drive in Disk Assignments as the above-mentioned procedures, press any key (except for <Ctrl-Y>) to use the full portion of the logical drive for one logical drive. Then please follow the steps below:

1. Press <Esc> to exit to the Main Menu.
2. Press <Esc> again to exit the Utility.
3. Press <Y> to restart your computer.

You have successfully created a new RAID logical drive. Please install the operating system to your computer by

following the detailed instruction of the “User Manual” in our support CD or “Quick Installation Guide”.

Two Logical Drives

After selecting the logical drive in Disk Assignments as the above-mentioned procedures, press <Ctrl-Y> to allocate a portion of the disk drives to the first logical drive. Then please follow the steps below.

```
FastBuild (tm) Utility (c) 2004-2005 ATI Technology, Inc.
[ Define LD Menu ]
LD No      RAID Mode  Total Drv
LD 1       RAID 1     2
Stripe Block: NA           Fast Init: OFF
Gigabyte Boundary: ON       Cache Mode: WriteBack

[ Drive Assignments ]
Channel ID  Drive Model      Capacity (MB)  Assignment
1:Mas ST380013AS          80027           Y
2:Mas ST380013AS          80027           Y
3:Mas S[Enter array capacity (in MB) here: 100000] N
4:Mas S[Enter array capacity (in MB) here: 100000] N

[ Keys Available ]
[↑] Up  [↓] Down  [ESC] Exit  [Space] Change Option  [Ctrl-Y] Save
```

1. Enter the desired capacity (MB) for the first logical drive and press <Enter>. The Define LD Menu displays again.

```
FastBuild (tm) Utility (c) 2004-2005 ATI Technology, Inc.
[ Define LD Menu ]
LD No      RAID Mode  Total Drv  Capacity (MB)  Status
LD 1       RAID 1     2          10000        Functional
LD 2       ----      ----          ----          ----
LD 3       ----      ----          ----          ----
LD 4       ----      ----          ----          ----
LD 5       ----      ----          ----          ----
LD 6       ----      ----          ----          ----
LD 7       ----      ----          ----          ----
LD 8       ----      ----          ----          ----

[ Keys Available ]
[↑] Up  [↓] Down  [ESC] Exit  [Enter] Select
```

2. Press the up and down arrow keys to select an available logical drive number and press <Enter>.


```
FastBuild (tm) Utility (c) 2004-2005 ATI Technology, Inc.
```

[Define LD Menu]		
LD No	RAID Mode	Total Drv
LD 2	RAID 1	2
Stripe Block: NA		Fast Init: OFF
Gigabyte Boundary: ON		Cache Mode: WriteBack

[Drive Assignments]			
Channel ID	Drive Model	Capacity (MB)	Assignment
1:Mas	ST380013AS	39960	Y
2:Mas	ST380013AS	39960	Y
3:Mas	ST380013AS	80027	N
4:Mas	ST380013AS	80027	N

[Keys Available]				
[f] Up	[↓] Down	[ESC] Exit	[Space] Change Option	[Ctrl-Y] Save

- Choose the RAID level and options for the second logical drive. Note that the disk drives in Channels 1 and 2 reflect smaller capacities because a portion of their capacity belongs to the first logical drive. In this example the disk drives in Channels 3 and 4 are not assigned to a logical drive.
- Press <Ctrl-Y> to save your logical drive configuration.
- Press <Esc> to exit to the Main Menu. Press <Esc> again to exit the Utility.
- Press <Y> to restart the computer.

You have successfully created a new RAID logical drive. Please install the operating system to your computer by following the detailed instruction of the "User Manual" in our support CD or "Quick Installation Guide".

2. AMD Windows RAID Installation Guide

AMD Windows RAID Installation Guide is an instruction for you to configure RAID functions by using RAIDXpert RAID management software under Windows environment. The RAIDXpert software offers local and remote management and monitoring of all AMD SB750 SATA logical drives that exist anywhere on a network. Its browser-based GUI provides email notification of all major events/alarms, memory cache management, drive event logging, logical drive maintenance, rebuild, and access to all components in the RAID configuration (server, controller, logical drives, physical drives, and enclosure). RAIDXpert is designed to work with AMD SB750 SATA RAID controllers. Other brands of RAID controllers are not supported. Please read this guide carefully and follow the instructions below to configure and manage RAID functions.

2.1 Components of RAIDXpert Installation Software

RAIDXpert installation software will install two major components to your system:

1. RAIDXpert RAID management software: The RAIDXpert software installs on the PC with the AMD SB750 SATA RAID Controller (the "Host PC").
2. Java Runtime Environment (in a private folder): The RAIDXpert installation program installs a private JRE in folder `_jvm` under the same directory where RAIDXpert is installed. RAIDXpert uses this private JRE to avoid incompatibility issues with any other JREs that may be present on your system.

2.2 Browser Support

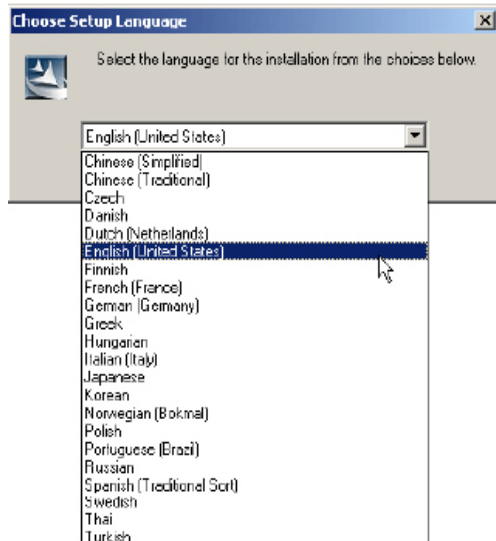
On the Host PC with the AMD SB750 Controller, where you install RAIDXpert, you must have one of the following browsers: Internet Explorer 6.0, Mozilla Suite 1.7, Mozilla Firefox 1.0, or Netscape Navigator 7.1.

If you do not have one of the above browsers, install the browser first and make it the default browser. Then install RAIDXpert. You must use one of the browsers listed above on your networked PC in order to access RAIDXpert over the network.

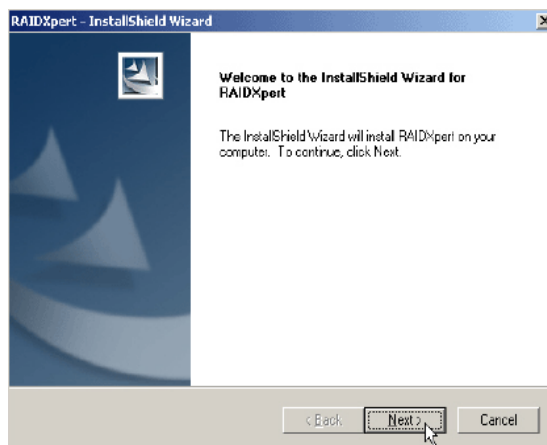
2.3 Installing RAIDXpert

Follow these steps to install RAIDXpert on your Windows-based PC or Server.

1. Boot the PC or server, launch Windows, and log in as the Administrator. If the computer is already running, exit all programs. If you are not logged in as the Administrator, log out, then log in again as the Administrator.
2. Insert the software CD into your CD-ROM drive.
3. Double-click the Install CD's icon to open it.
4. Double-click the Installer icon to launch it (right). The first RAIDXpert installation dialog box appears.
5. Follow the prompts in the installation dialog boxes.
6. When the first installation screen appears, choose an installer language from the dropdown menu.



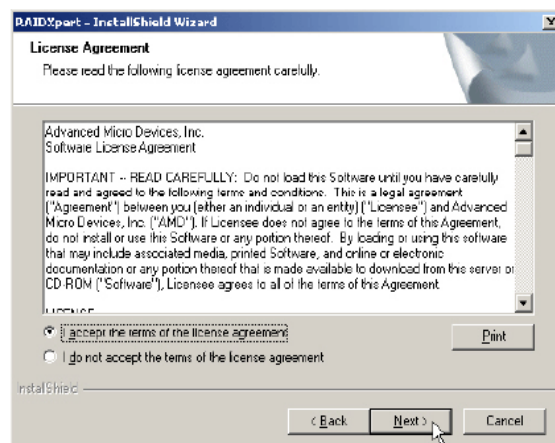
7. When the Welcome screen appears, click the **Next** button.



8. When the License Agreement screen appears, click the "I accept the terms of the license agreement" option to proceed with installation. Then click the **Next** button to continue.

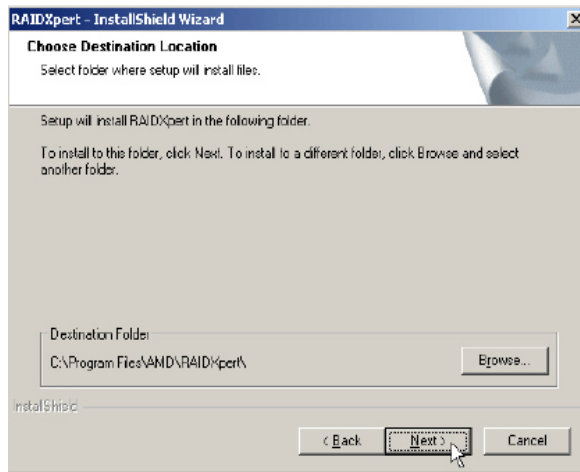
Note:

If you leave the "I do not accept the terms of the license" option selected, the installation will quit when you click **Next**.



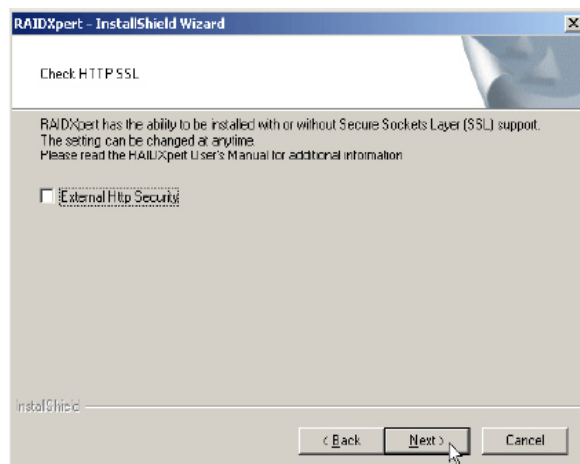
9. When the Choose Install Folder screen appears, make your selection of a folder for the RAIDXpert applications you are installing. For example, the Windows default folder is: **C:\Program Files\AMD\RAIDXpert**

If you want a different folder, type its location or click the **Choose...** button and select a new location. Click the **Next** button when you are finished.

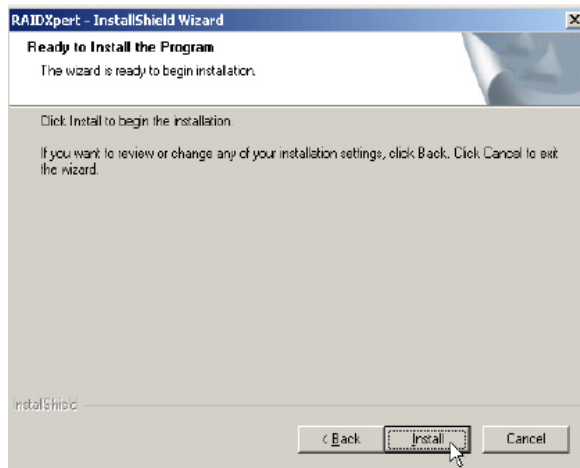


10. When the Check HTTP SSL screen appears, you can choose External Security. An explanation follows.

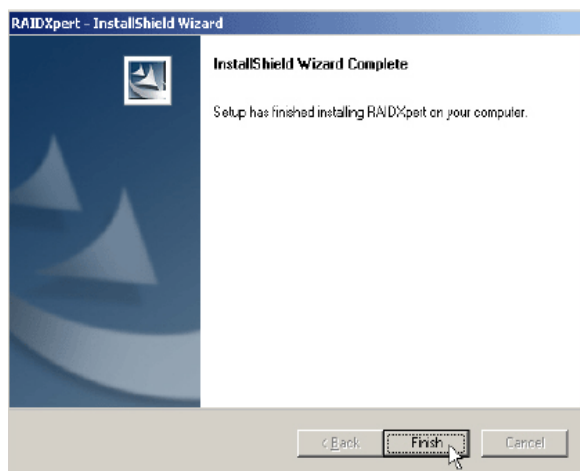
External SSL Security – Applies security to all connections involving the Internet or outside your company firewall. Security options are invisible to authorized users. AMD provides a default certificate for the server as well as for internal data communication. However, in some cases it is better to install and verify your own certificate for the webserver. And, if possible, verify your certificate by certificate authority like Verisign or Thwate. See your MIS Administrator for guidance. Click the **Next** button when you have made your choice.



11. When the Ready to Install screen appears, click the **Install** button to continue.



12. When the Install Complete screen appears, click the **Finish** button.



2.4 Logging into RAIDXpert

Choose RAIDXpert in the Windows Programs menu. Or, log on manually with your browser:

1. Launch the Browser.
2. In the Browser address field, type the entry explained below.

If you did *not* choose the External Security option during RAIDXpert installation, use the *Regular* connection.

If you chose the External Security option during RAIDXpert installation, use the *Secure* connection.

2.5 Regular Connection

RAIDXpert uses an HTTP connectionhttp://

- Enter the Host PC's IP address127.0.0.1 or localhost
- Enter the Port number:25902
- Add to launch RAIDXpert./amd

Together, your entry looks like this:

http://127.0.0.1:25902/ati or **http://localhost:25902/ati**

2.6 Secure Connection

RAIDXpert uses a secure HTTP connectionhttps://

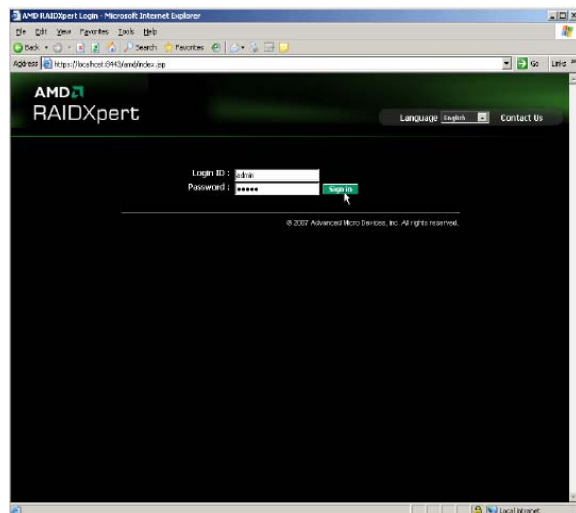
- Enter the Host PC's IP address127.0.0.1 or localhost
- Enter the Port number:8443
- Add to launch RAIDXpert. /amd

Together, your entry looks like this:

https://127.0.0.1:8443/amd or **https://localhost:8443/amd**

Note that the IP address shown above applies to a log-in at the Host PC. When you log in over a network, enter the Host PC's actual IP address or hostname.

Press the **Enter** key. Then, when the login screen appears, type **admin** in the Login ID field. Type **admin** again in the Password field. The RAIDXpert login and password are case sensitive.



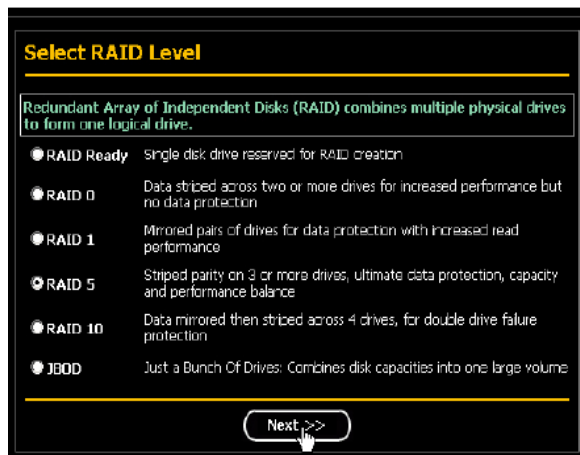
Click the **Sign in** button. After sign-in, the RAIDXpert opening screen appears.



2.7 Creating a New Logical Drive

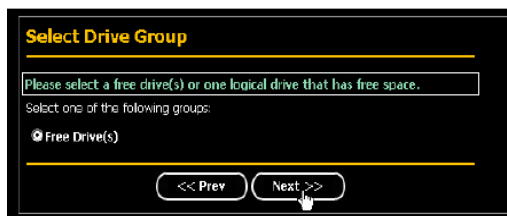
A logical drive is a collection of physical drives in a RAID. To create a new logical drive:

1. Click **Logical Drive View** in Tree View.
2. Click the **Create** tab in Management View. The Select RAID Level screen appears.
3. Select the option beside the RAID level you want for your logical drive. RAIDXpert displays the RAID levels you can use with the available physical drives.



4. In the Select Drive Type screen, click the following option:
 - **Free Drives** – Select all Free (unassigned) physical drives

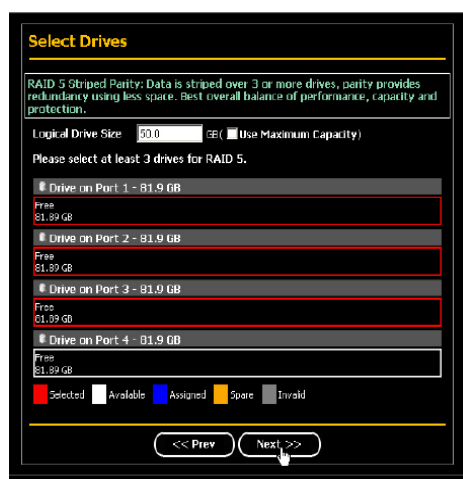
The Select Drives screen appears.



5. Click the **Next** button.
6. If you want to split the capacity of your physical drives between two logical drives, enter the capacity for the first logical drive in the Logical Drive Size field. Or, to use the maximum capacity of the physical drives, check the Use Maximum Capacity box. For RAID Ready and JBOD, the system will check the Use Maximum Capacity Box automatically.



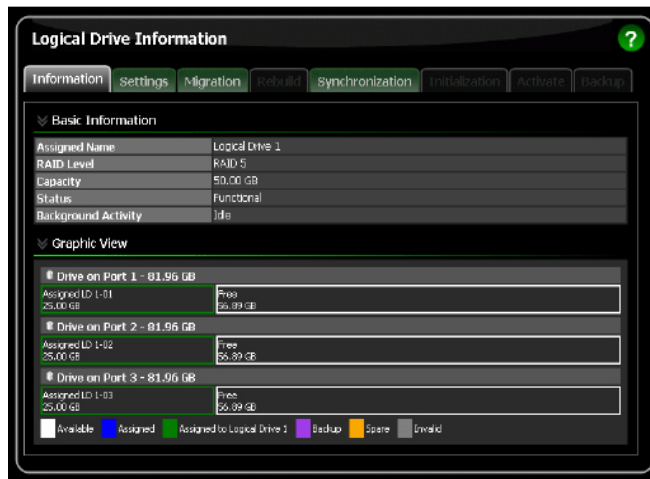
7. Click the physical drives to select them. Available drives have a black frame. Selected drives have a red frame. For RAID Ready, select only one physical drive.



8. Click the **Next** button. The Assign a Name screen appears.
9. Enter a name for the logical drive in the field provided.

10. Click the **Next** button. The Final Settings screen appears.
11. RAID 0 and 10. Choose a Stripe Block Size from the dropdown menu. The choices are 64 and 128 KB. The Write Cache policy is None. You cannot change this setting.
12. RAID 0 and 1. Select a Gigabyte Boundary policy from the dropdown menu.
 - **GigaByte Boundary** – Rounds the size of the logical drive down to the nearest whole gigabyte. This is the default. For more information.
 - **None** – No Boundary function.
13. Select an Initialization policy from the dropdown menu.
 - **Fast Initialization** – Erases the reserve and master boot sectors of the physical drives being added to the logical drive.
 - **Full Initialization** – Erases all sectors of the physical drives being added to the logical drive. RAID 0 and 1 only.
 - **None** – No initialization. This choice is not recommended.

14. Click the **Finish** button. If there are physical drives available, the Select RAID Level screen appears again, where you can create an additional logical drive. Click the **Logical Drive** in Tree View to see all of the information about your new logical drive.



Before you can use your new logical drive, you must partition and format the logical drive using your PC's operating system.

2.8 Connecting to RAIDXpert from the Internet

The above instructions cover connections between the Host PC and other PCs using RAIDXpert over your company network. It is also possible to connect to a Host PC from the Internet.

Your MIS Administrator can tell you how to access your network from outside the firewall. Once you are logged onto the network, you can access the Host PC using its IP address.

Please note that only the Host PC can read and write data to the logical drives. However, other PCs can monitor the Host PC from virtually any location.

2.9 Running RAIDXpert without Network Connection

While RAIDXpert was designed to run over a network, you can run RAIDXpert without a network connection but only from the Host PC. Follow this procedure:

1. Choose RAIDXpert in the Windows Programs menu. Or choose RAIDXpert in the Linux Applications menu. Your browser opens and displays a "no connection to the Internet is currently available" message.
2. Click the Work Offline button.
3. In the RAIDXpert login screen, enter your user name and password (if used), then click the Sign in button. A "webpage unavailable while offline" message will display.
4. Click the Connect button. A "no connection to the Internet is currently available" message will display.
5. Click the Try Again button.

After a few moments, RAIDXpert will display normally in your browser.