

VIA / JMicron RAID Installation Guide

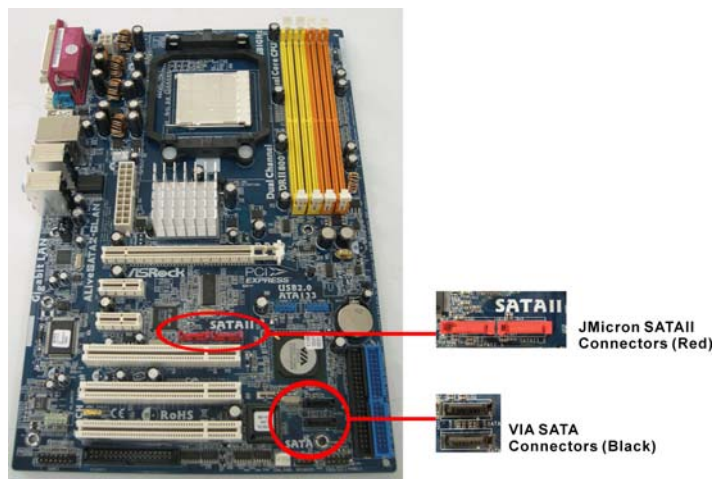
1. Introduction to VIA / JMicron RAID Installation Guide	3
2. VIA RAID Installation Guide	3
2.1 VIA BIOS RAID Installation Guide	3
2.1.1 Introduction of RAID	3
2.1.2 RAID Configuration Precautions	4
2.1.3 BIOS Configuration Utility	5
2.1.3.1 Enter BIOS Configuration Utility	5
2.1.3.2 Create Disk Array	5
2.1.3.3 Delete Disk Array	7
2.1.3.4 Select Boot Array	8
2.2 VIA Windows RAID Installation Guide	8
2.2.1 Create RAID Array	9
2.2.2 Delete Disk Array	11
2.2.3 Check All Disks	12
2.2.4 Verify Mirror Disk	12
2.2.5 Synchronize Mirror Disk	13
2.2.6 Disk Error Detection	14
2.2.7 Duplicate Critical RAID 1 Array	14
2.2.8 Rebuild Broken RAID 1 array	15

3. JMicron RAID Installation Guide	17
3.1 JMicron BIOS RAID Installation Guide	17
3.1.1 BIOS Configuration Utility	17
3.1.1.1 Enter BIOS Configuration Utility	17
3.1.1.2 Create RAID Disk Drive	18
3.1.1.3 Delete RAID Disk Drive	21
3.1.1.4 Revert HDDs to non-RAID	21
3.1.1.5 Solve Mirror Conflict	22
3.1.1.6 Rebuild Mirror Drive	22
3.2 JMicron Windows RAID Installation Guide	23
3.2.1 Creating RAID	23
3.2.2 Creating RAID from Existing Disk	25
3.2.3 Deleting RAID	26
3.2.4 Rebuilding RAID	26
3.2.5 Auto-Resynching RAID	27

1. Introduction to VIA / JMicron RAID Installation Guide

This motherboard is equipped with 2 SATA connectors supported by VIA VT8237A south bridge chipset, which support RAID (RAID 0, RAID 1, JBOD) functions, and 2 SATAII connectors supported by JMicron JMB363 chipset, which support RAID (RAID 0, RAID 1, JBOD) functions. To create RAID with two HDDs, please insert the two HDDs simultaneously to either VIA SATA connectors (black) or JMicron SATAII connectors (red). If you insert two HDDs to VIA SATA connectors and plan to configure RAID functions, please refer to VIA RAID installation guide part, including VIA BIOS/Windows RAID installation guide. If you insert two HDDs to JMicron SATAII connectors and plan to configure RAID functions, please refer to JMicron RAID installation guide part, including JMicron BIOS/Windows RAID installation guide.

To configure RAID functions on this motherboard correctly, please read this installation guide and follow the installation procedures carefully. You may refer to the motherboard layout below for SATA (black) and SATAII (red) connectors' location before configuring RAID functions.



Please note that if you insert one HDD to SATA connector and the other HDD to SATAII connector, you are not allowed to create RAID.

2. VIA RAID Installation Guide

If you insert two HDDs to VIA SATA connectors and plan to configure RAID functions, please refer to VIA RAID installation guide part, including VIA BIOS RAID installation guide and VIA Windows RAID installation guide.

2.1 VIA BIOS RAID Installation Guide

You are allowed to configure RAID functions under BIOS environment.

2.1.1 Introduction of RAID

VIA VT8237A south bridge chipset integrates RAID controller supporting RAID 0, RAID 1, and JBOD functions with two independent SATA channels. This section will introduce the basic knowledge of RAID.

RAID

The term "RAID" stands for "Redundant Array of Independent Disks", which is a method combining two or more hard disk drives into one logical unit. For optimal performance, please install identical drives of the same model and capacity when creating a RAID set.

RAID 0 (Data Striping)

RAID 0 is called data striping that optimizes two identical hard disk drives to read and write data in parallel, interleaved stacks. It will improve data access and storage since it will double the data transfer rate of a single disk alone while the two hard disks perform the same work as a single drive but at a sustained data transfer rate.

WARNING!

Although RAID 0 function can improve the access performance, it does not provide any fault tolerance. Hot-Plug any HDDs of the RAID 0 Disk will cause data damage or data loss.

RAID 1 (Data Mirroring)

RAID 1 is called data mirroring that copies and maintains an identical image of data from one drive to a second drive. It provides data protection and increases fault tolerance to the entire system since the disk array management software will direct all applications to the surviving drive as it contains a complete copy of the data in the other drive if one drive fails.

JBOD (Spanning)

A spanning disk array is equal to the sum of all drives. Spanning stores data onto a drive until it is full then proceeds to store files onto the next drive in the array. When any member disk fails, it will affect the entire array. JBOD is not really a RAID, and it does not support fault tolerance.

2.1. 2 RAID Configurations Precautions

Please use two new drives if you are creating a RAID 0 (striping) array for performance. It is recommended to use two SATA drives of the same size. If you use two drives of different sizes, the smaller capacity hard disk will be the base storage size for each drive. For example, if one hard disk has an 80GB storage capacity and the other hard disk has 60GB, the maximum storage capacity for the 80GB-drive becomes 60GB, and the total storage capacity for this RAID 0 set is 120GB.

1. You may use two new drives, or use an existing drive and a new drive to create a RAID 1 (mirroring) array for data protection (the new drive must be of the same size or larger than the existing drive). If you use two drives of different sizes, the smaller capacity hard disk will be the base storage size. For example, if one hard disk has an 80GB storage capacity and the other hard disk has 60GB, the maximum storage capacity for the RAID 1 set is 60GB.
2. Please verify the status of your hard disks before you set up your new RAID array.

2.1.3 BIOS Configuration Utility

2.1.3.1 Enter BIOS Configuration Utility

After the system powers on, the following information will appear on the screen. Press 'Tab' key to enter BIOS configuration utility.

```
VIA Technologies, Inc. VIA Serial ATA RAID BIOS Setting Utility v1.00
Copyright (C) VIA Technologies, Inc. All Right reserved.

Scan Devices, Please wait...
Press < Tab > key into User Window!
Channel 0 Master: IC35L040AVVA07-0
Channel 1 Master: IC35L040AVVA07-0
```

The main interface of BIOS configuration utility is as below:



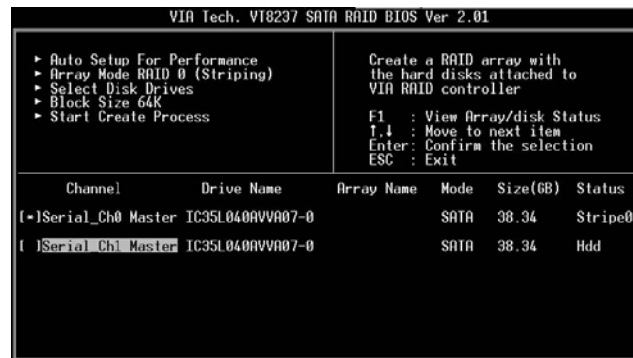
2.1.3.2 Create Disk Array

1. Within the main interface, use the up and down arrow key to highlight the Create Array command and press <Enter> to call out the list of creation steps.
2. Highlight the Array Mode and press <Enter>, then a list of array modes will appear. Just highlight the target array mode that you want to create, and press <Enter> to confirm the selection.





3. There are two methods to create a disk array. One method is “Auto Setup”, and another is “Select Disk Drives”. Select “Auto Setup” to allow BIOS to select the disk drives and create array automatically. Select “Select Disk Drives” to let user select the array drives manually. When using Select Disk Drives method, the channel column will be activated. Just highlight the target drives that you want to use and press <Enter> to select them respectively. When all drives have been selected, press <Esc> to go back to the creation steps menu.



Create RAID 0

If RAID 0 array is selected in step 2, user can also select a block size for the array. Use the arrow key to highlight the “Block Size” and press <Enter>. Then the list of available block size will popup. The block size can be selected from 4K to 64K Bytes.



Use the arrow key to highlight the Start Create Process and press <Enter>, then a warning message will appear. Press Y to finish the creation, or press N to cancel the creation. Please note that the content of the hard drive will be destroyed after array creation.

Create RAID 1

The data on disk drives will be destroyed if user uses “Auto Setup” to create RAID 1. But you can reserve the data on source drive if you use “Select Disk Drives” to select the source and the mirror drive.



Press “y” to copy data of source to mirror drive. There is a limitation when using this feature. The capacity of mirror drive must be greater or equal to the source drive; otherwise the RAID 1 can’t be created and a error message will appear: “Error: mirror’s size is smaller than source!!! Press ESC return”. If user does not want to duplicate data, the data on the source and the mirror drive will be destroyed.

Create JBOD

The data on disk drives will be destroyed if user uses “Auto Setup” to create a JBOD. However, you can reserve the data on the first disk drive of a JBOD array if you use “Select Disk Drives” to select disk drives



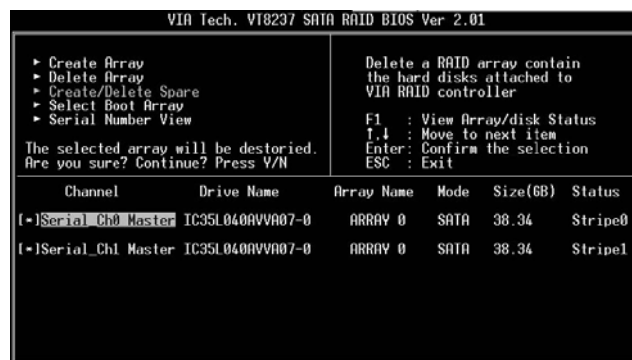
The data on the first disk drive will be reserved and the other disk drives in JBOD will be expanded behind the first disk drive and become free space. Expand Span (JBOD) Array function is not available if VT8237A only supports 2 SATA ports.

2.1.3.3 Delete Disk Array

User can delete a specific RAID that has been created. Following are the steps to delete a created disk array.

1. Use arrow key to highlight Delete Array item in main menu interface, and press <Enter>. The channel column will be activated.
2. Use arrow key to highlight the target disk drive and press <Enter>. A

warning message will appear. Press Y to delete a specific array or press N to cancel.



Delete a disk array will destroy all the data on the disk array except RAID 1. When a RAID 1 is deleted, the data on these two hard disk drives will be reserved and become two normal disks.


2.1.3.4 Select Boot Array

User can select a disk array as boot device if user wants to boot operating system from an array. Boot disk array may not be selected if user does not boot the Operating System from the disk array. Use the arrow key to highlight the “Select Boot Disk” item then press <Enter>. The channel column will be activated. Just use arrow key to highlight the target disk array then press <Enter>. If you select a disk array that has a boot mark and press <Enter>, then its boot setting will be canceled.



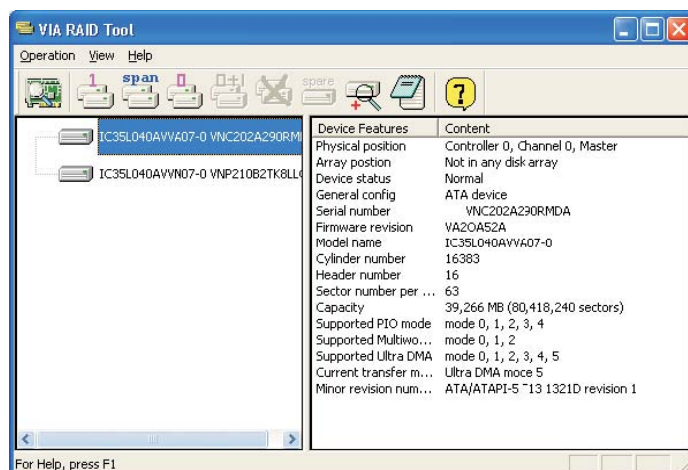
2.2 VIA Windows RAID Installation Guide

You are allowed to configure RAID functions under Windows environment. The “RAID Software” is a Windows-based software utility with graphical user interface and provides user an easy-operation tool to configure and manage disk drives or disk arrays connected to VT8237 SATA controller.




After GUI software is installed, it will automatically start every time when your Windows OS is started. An icon  will appear in the system tray of the tool bar to indicate that GUI software is currently running.

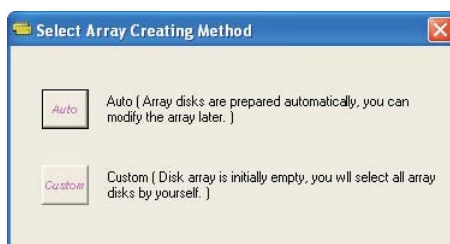


Just double click on the small icon to call out the main interface of the software.



2.2.1 Create Disk Array

1. You may click on one of the three buttons to create different types of disk array—  RAID 1,  Span, and  RAID 0. Then a "Select Array Creating Method" will be prompted.



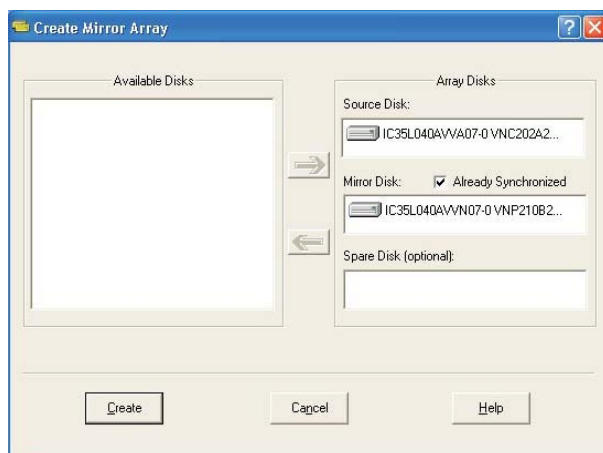
Auto:

The software will configure the available hard disk drives to be a disk array. User can modify the hard disk drives later. It is strongly recommended to use this method.

Custom:

Disk array is arranged by user.

- Click "Auto" button. The "Creating Array" window will pop up. If you select "Custom", the "Available Disks" window will list the available disk drives for array-creating. Select a disk drive and click right arrow button to add the specific disk drive to array. After adding a disk drive, user can also remove the selected disk drive from array. Click the disk drive in "Array Disks" windows, then click left arrow button to remove the selected disk drive.

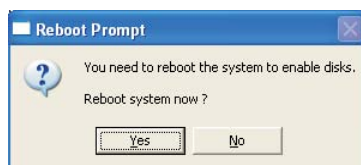


Press "Create" button to create or "Cancel" button to cancel it.

After you pressed the "Create" button, a warning message will pop up. Click "Yes" to finish the creation of disk array, or "No" to cancel.

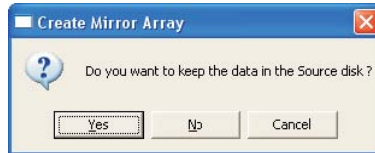


- A message box will pop up to prompt user that the disk array has been created successfully and ask user whether to restart the computer. Click "Yes" to restart the computer or click "No" to skip restarting. New disk array setting will take effect only after restarting.



Create RAID 1

You can reserve the data on the source drive after clicking "Create" button when you create a RAID 1 array.



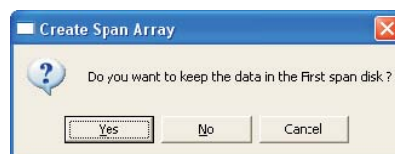
There is a limitation if user wants to keep the data on the source drive the capacity of the mirror drive must be greater or equal to the source drive, otherwise the RAID 1 can't be created.



If user wants to keep data in the source drive, RAID tool will ask user to synchronize the mirror drive after the system's rebooting.


Create JBOD

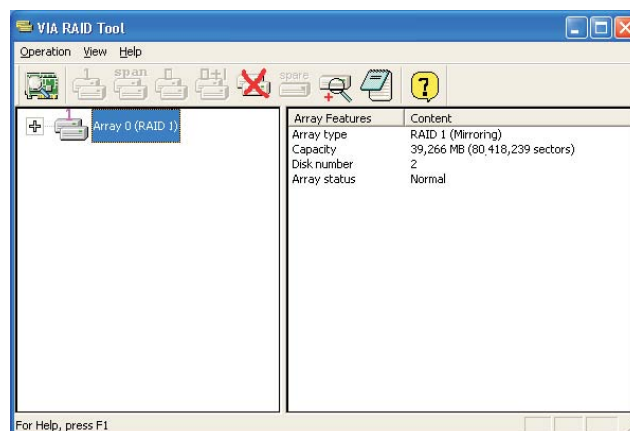
The data in the first disk drive of JBOD array can be reserved when a JBOD array is created.



The data on the first disk drive will be reserved and the other disk drives in JBOD will be expanded behind the first disk drive and become free space.

2.2.2 Delete Disk Array

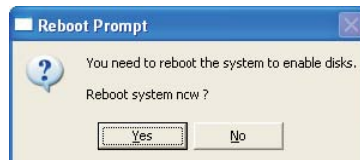
1. Select the disk array that you want to delete from the left  window. Click "Remove Array" button , then a warning message will pop up.



2. Click "Yes" to delete the specific disk array or click "No" to cancel.



3. A message box will pop up to prompt user that the disk array has been deleted successfully and ask user whether to restart the computer. Click "Yes" to restart the computer or click "No" to skip the restarting. New setting will take effect only after restarting.



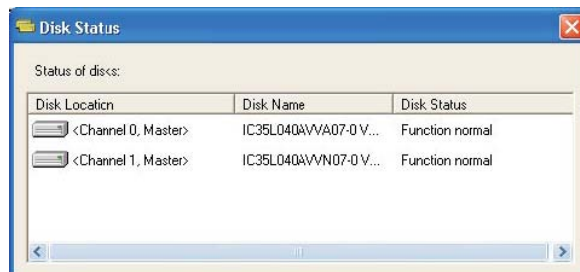
Warning:

Deleting a disk array will destroy all the data on the disk array except RAID 1. When a RAID is deleted, the data on these two hard disk drives will be reserved.

2.2.3. Check All Disks

You can check if all the disk drives work normally by clicking button. After you complete the checking, a dialog window will pop up to show each disk's current status as following picture.

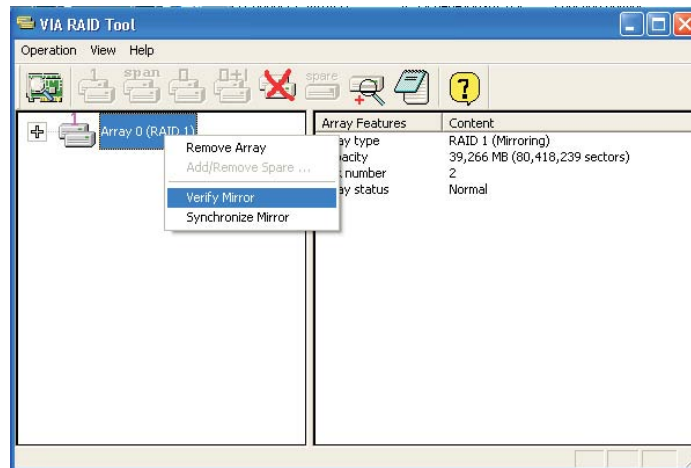
Your hard disk drive must be compatible with ATA/ATAPI-5 specifications and support SMART commands; otherwise the checking will fail.



2.2.4 Verify Mirror Disk


Data on the mirror disk must be the same as its corresponding source disk to provide fault tolerance for RAID 1.

1. Select a RAID 1. Right-click the selected RAID, and then a shortcut menu will appear. Click "Verify Mirror" to verify whether the source and the mirror disks are identical.




2. After executing “verify mirror” command, a dialog will show the verifying process. You can pause or cancel this process at any time. The process may take a long time if the capacity of RAID is large.

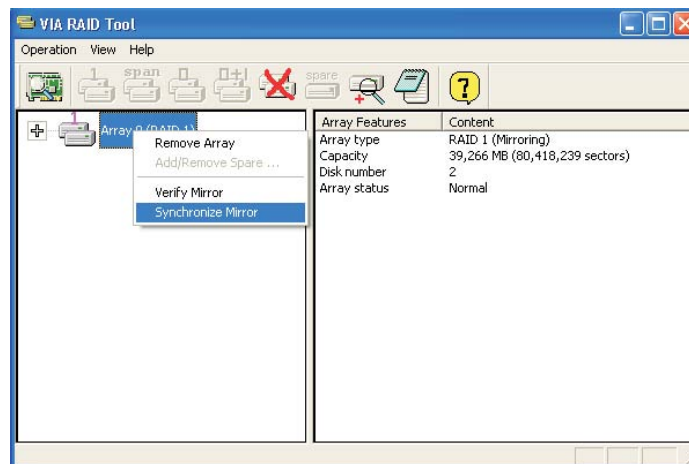


3. When the mirror disk is not identical with the corresponding source disk, the mirror disk will be marked with a “need-sync” icon: . A “need-sync” mirror disk should be synchronized as soon as possible.

2.2.5 Synchronize Mirror Disk

For RAID 1, it must be synchronized when data on the mirror disk is not identical with its corresponding source disk. Sometimes the data on the mirror disk may be newer than the source disk. For example, the source disk is absent and the mirror disk runs in the tolerance mode. So the exact meaning of “Synchronize Mirror” is to keep the data on a pair of the source and the mirror disks identical. RAID software always marks the mirror disk with a “need-sync” icon  even though the mirror disk may have the correct data.

1. Select RAID 1. Right-click the selected RAID, then a shortcut menu will appear. Click “Synchronize Mirror” to synchronize the source and the mirror disks.



- When synchronization starts, a dialog will show the process. You can pause or cancel this process at any time.



- A message will pop up when synchronization is finished.



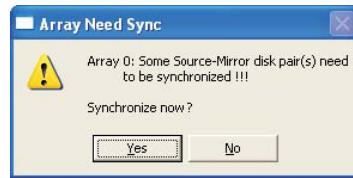
2.2.6 Disk Error Detection

RAID will pop up an error message when the failure or absence of a disk drive is detected.



2.2.7 Duplicate Critical RAID 1 Array

If, during the system-booting, the software detects the inconsistency between the source and the mirror disks of RAID 1, the disk array will be marked as critical status, and the software will automatically prompt user to duplicate the RAID 1 to make the mirror disk consist with the corresponding source disk again.



You may click "Yes" to synchronize now or click "No" to synchronize later.



When the synchronization starts, a dialog will show the process. You can pause or cancel this process at any time. If you cancel the synchronization process, the RAID is on "need-sync" condition. You should synchronize again to guarantee the data are identical between the source and the mirror disk drives. A message will pop up when synchronization is finished.



2.2.8 Rebuild Broken RAID 1 array

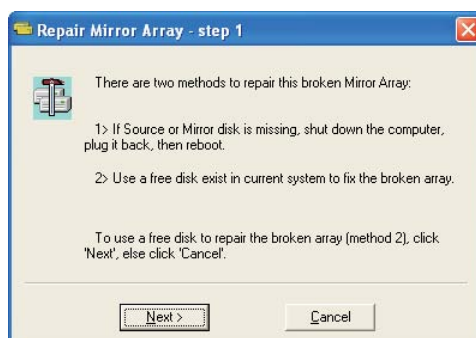
If, during the system-booting, the failure or absence of any member disk of RAID is detected, the array will be marked as broken status. If broken RAID 1 array is detected by the RAID software, it will indicate a serial steps to repair this problem.

1. A dialog box will pop up to indicate the RAID is broken. Click Yes.

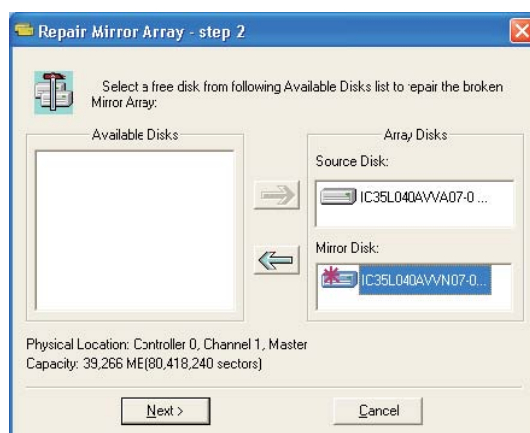
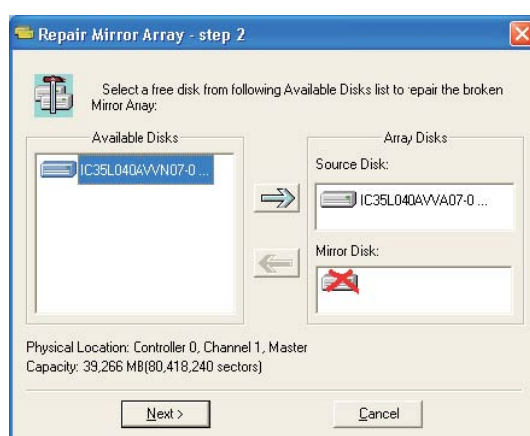


2. Then another dialog box will pop up. If the source or the mirror disk drive is unplugged only, click "Cancel" to stop rebuilding step. Shut down the system. Plug the absent disk drive, and then reboot the system. If the original disk drive is broken-down, you may plug a new disk drive

then reboot the system. Click "Next" to the next step.

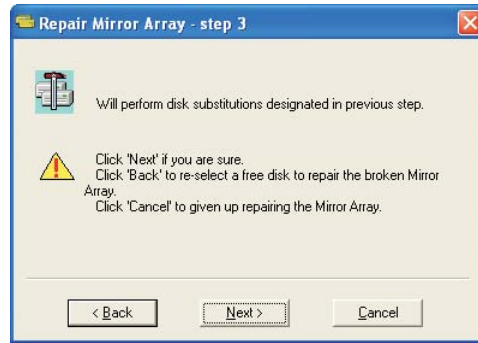


3. Select a disk drive from "Available Disks" and click  button to replace the broken-down one, and then click "Next".

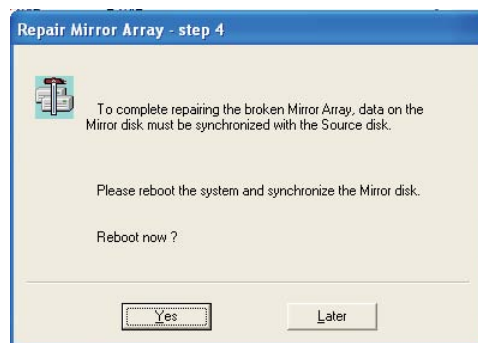


4. A warning message will pop up. If you want to rebuild the RAID by using the disk drive that you selected in the previous step, click "Next".

Warning: The data on the selected disk drive will be lost.



5. Reboot the system.



6. This RAID is marked as a critical RAID. The RAID software will do the "Duplicating Critical RAID 1" process.

3. JMicon RAID Installation Guide

If you insert two HDDs to JMicon SATAII connectors and plan to configure RAID functions, please refer to JMicon RAID installation guide part, including JMicon BIOS RAID installation guide and JMicon Windows RAID installation guide.

3.1 JMicon BIOS RAID Installation Guide

You are allowed to configure RAID functions under BIOS environment.

3.1.1 BIOS Configuration Utility

3.1.1.1 Enter BIOS Configuration Utility

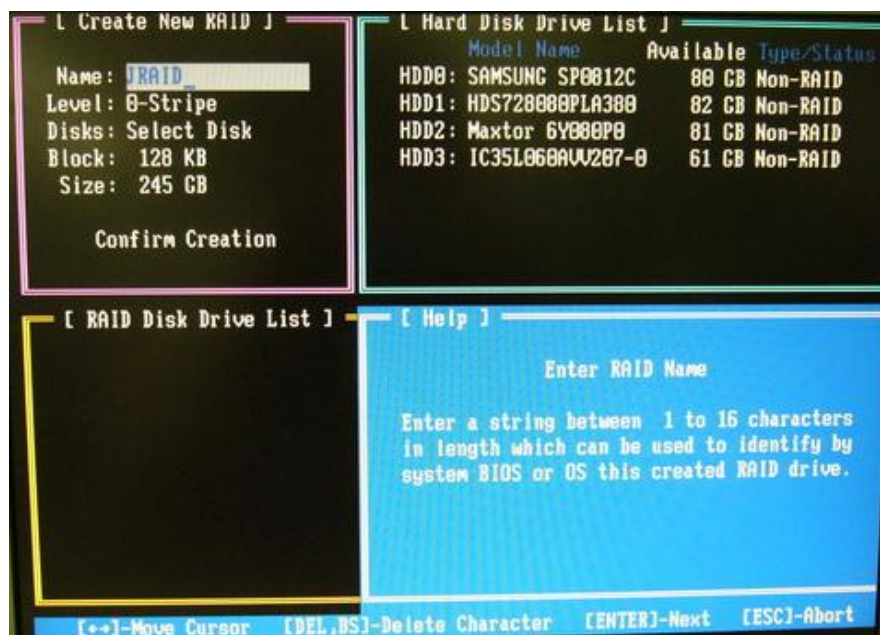
After the system powers on, the following information will appear on the screen. Press 'Ctrl-J' key to enter BIOS configuration utility.

```
JMicron Technology Corp. PCIE-to-SATAII/IDE
Copyright (C) 2004-2005 JMicon Technology.

HDD0: ST3120027AS
HDD1: SAMSUNG SP1614C
HDD2: ST380011A
HDD3: ST3160023A

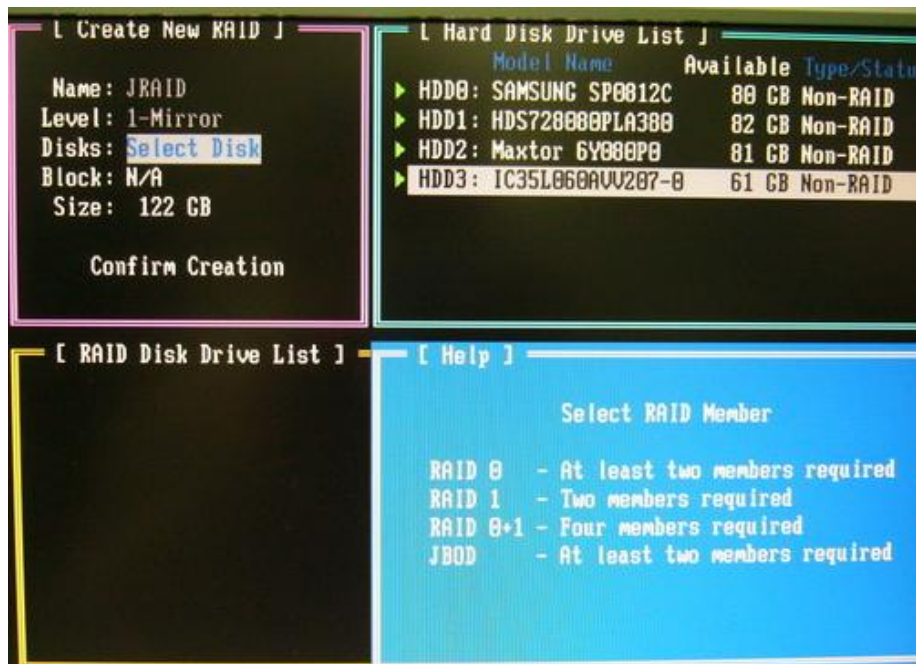
Press <Ctrl-J> to enter RAID Setup Utility
```

The main interface of BIOS configuration utility is as below:



3.1.1.2 Create RAID Disk Drive

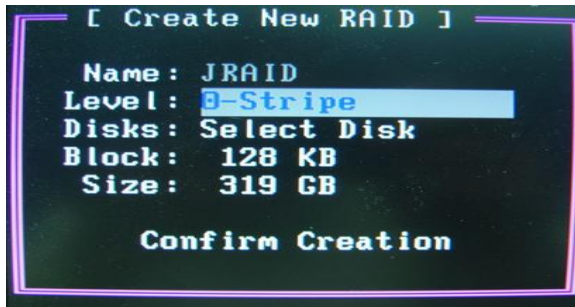
Entering "Create RAID Disk Drive" item, you can see the below window. Before you create RAID, you need to select RAID mode, as you want.



When you push "Create RAID Disk Drive" item to enter RAID selection menu, you can use <↑> <↓> to select RAID mode.



There are three RAID modes that are RAID 0, RAID 1, and JBOD.



Then you can select HDDs to create RAID. Entering "Select Disk Drives" item, use <Space> to choose the HDDs you want to select.



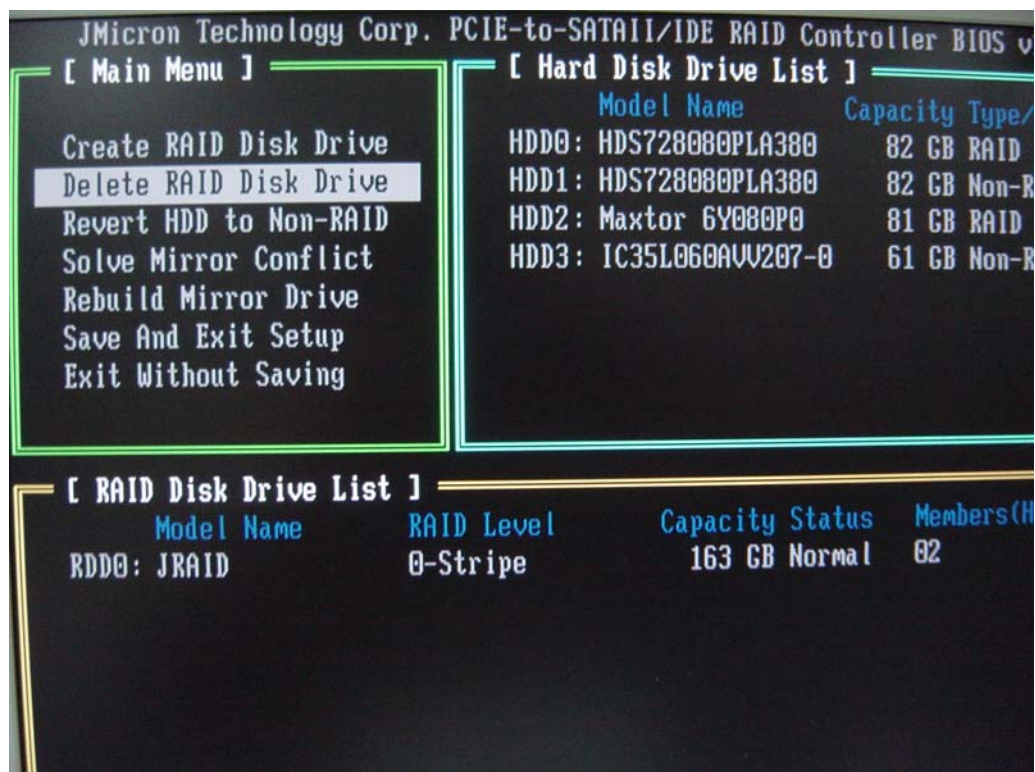
After selecting HDD to create RAID. You can choose Block Size from 4K to 128K Bytes in RAID Mode.



After finishing all selections, press <Enter> to confirm RAID construction. The Dialog Box will show up "Create RAID on the select HDD (Y/N)?" If you enter <Y> key, RAID will be created. If you enter <N> key, RAID setting will be ignored and RAID is not created. All original data in HDD List of RAID will be damaged after you enter <Y> key to create RAID.

3.1.1.3 Delete RAID Disk Drive

If you want to delete existed RAID, you can select "Delete RAID Disk Drive" item. Use <Space> key to select the RAID you want to delete. After selection, push key to confirm your deletion of RAID.



3.1.1.4 Revert HDDs to non-RAID

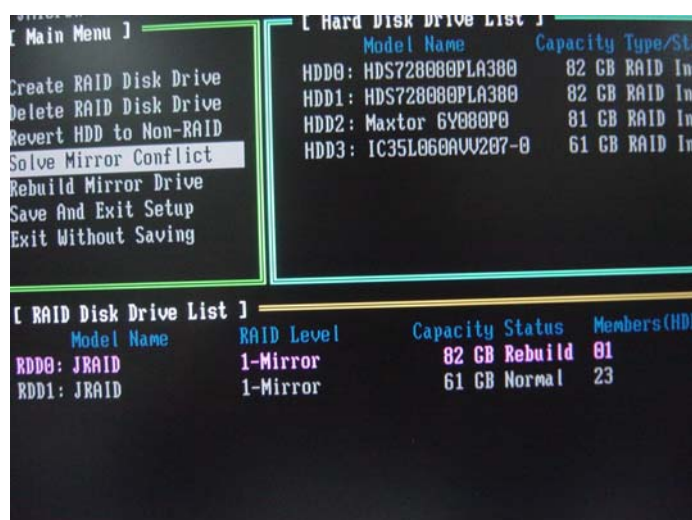
When you connect your HDD in PC system, there might be a Broken RAID HDD that is member of another RAID originally. Facing this kind of

condition, JMB36X RAID BIOS provides you to convert Broken RAID HDD into non-RAID mode. Once you decide to do it, original data in Broken RAID HDD will be damaged. When new RAID is created through JMB36X, Broken RAID HDD is forbidden to select to avoid to damaging your system. This function is used for deleting RAID structure of single RAID HDD.



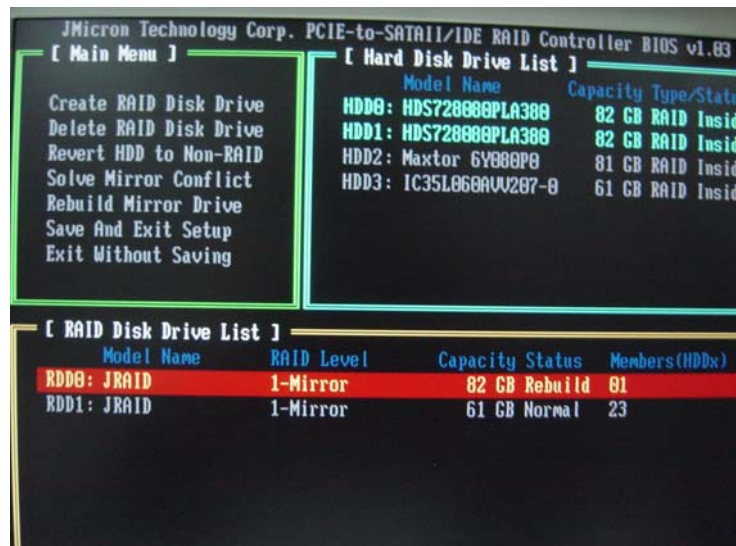
3.1.1.5 Solve Mirror Conflict

When your mirror raid drive has lost each other, the Option ROM gives users an method to solve this problem. You can choose one of the members of Mirror drive as source disk. And then try to rebuild the Mirror drive according to the content of chosen one.



3.1.1.6 Rebuild Mirror Drive

This option will help you to rebuild Mirror drive. The bottom of the window will show the achieved percentage of scheduled progress.



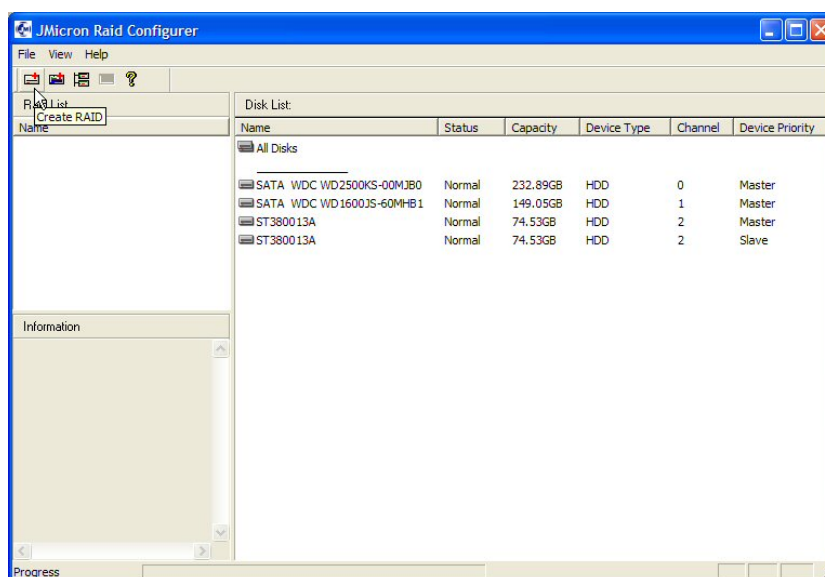
3.2 JMicron Windows RAID Installation Guide

JMRaidTool application is an utility to set up the RAID configuration of JMB36X. There are two kinds of information displayed in the main utility window: the information of all hard disks and the disk array.

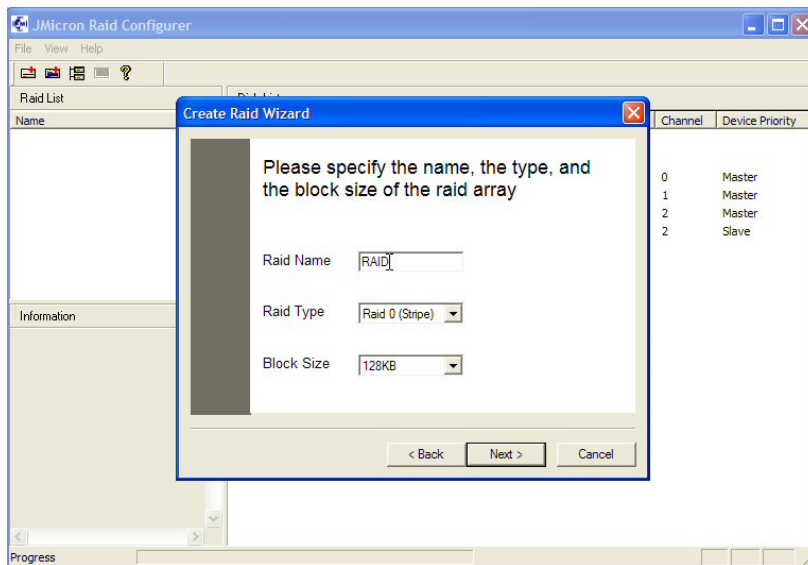
3.2.1 Creating RAID

JMRaidTool supports the creation of RAID 0 (Stripe), 1 (Mirror), and JBOD. When the raid array is created, the data in the disks will be erased meanwhile. The disks of the raid array need to be initialized and partitioned before using it.

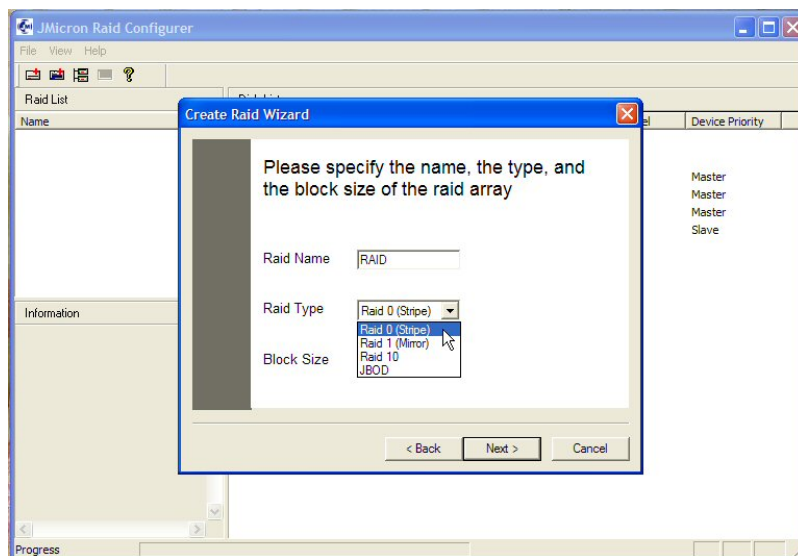
Left-click the "Create RAID" button. And press<Next>.



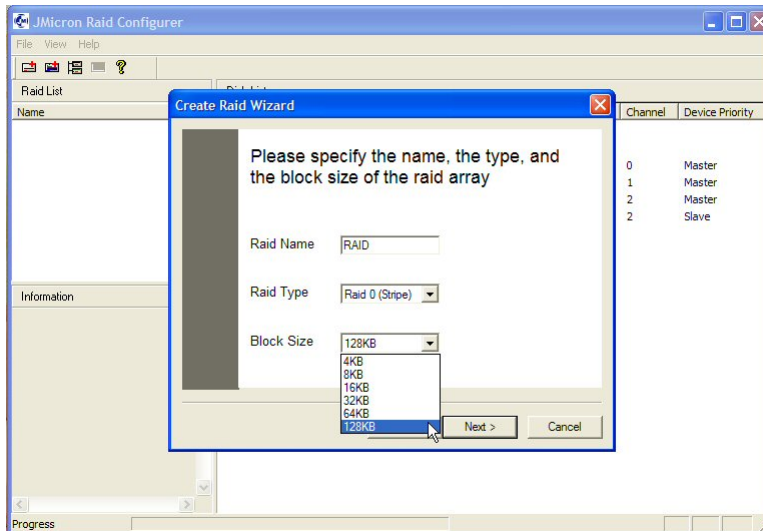
Key-in the name of the raid array.



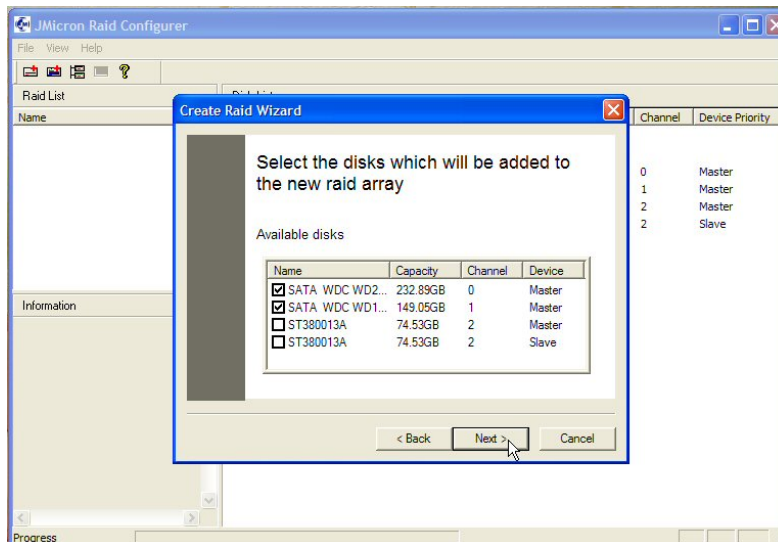
Select the RAID type.



Select the block size.



Select hard disks and then press “Next” button.

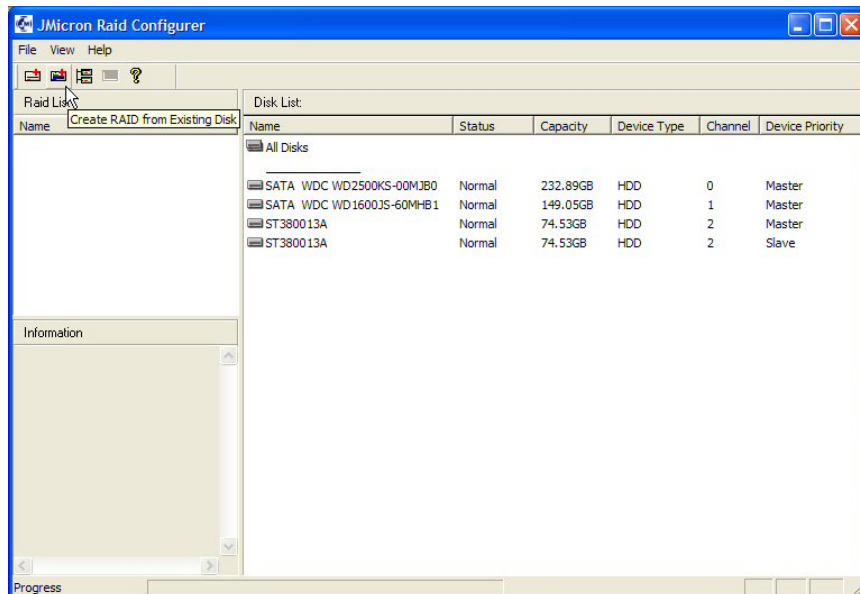


Press the “Finish” button to create a new raid array. Then the information of the created raid array will be displayed in the window.

3.2.2 Creating RAID from Existing Disk

JMRaidTool supports the RAID creation from the existing disk. The data of the existing source disk will be kept and will not be erased when the new disk array is created. The existing source disk should be a non-RAID disk.

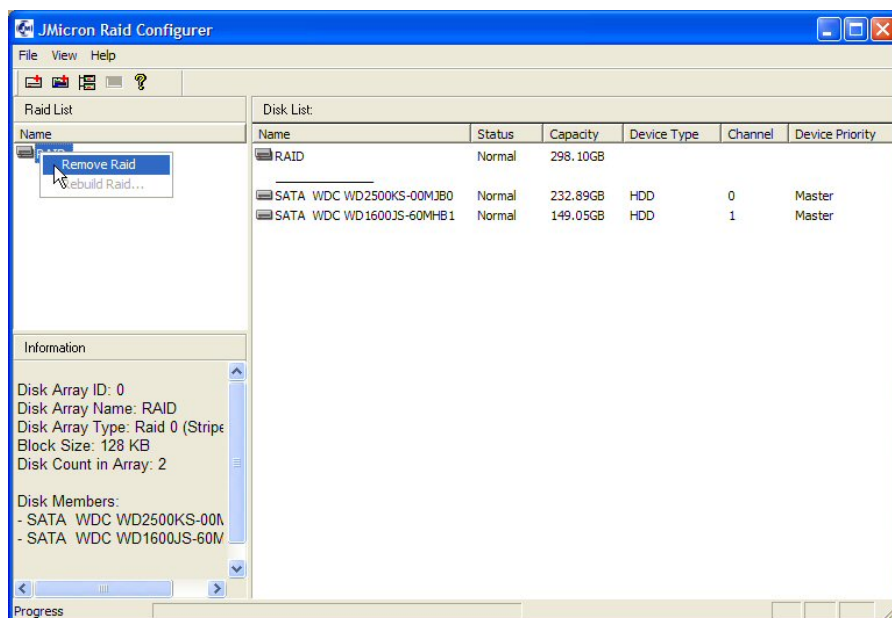
Left-click the “Create RAID from Existing Disk” button. Then follow the instruction shown on the windows. The procedures are similar to the steps of creating RAID.



3.2.3 Deleting RAID

This options provides a popup menu for users to delete the existing disk arrays.

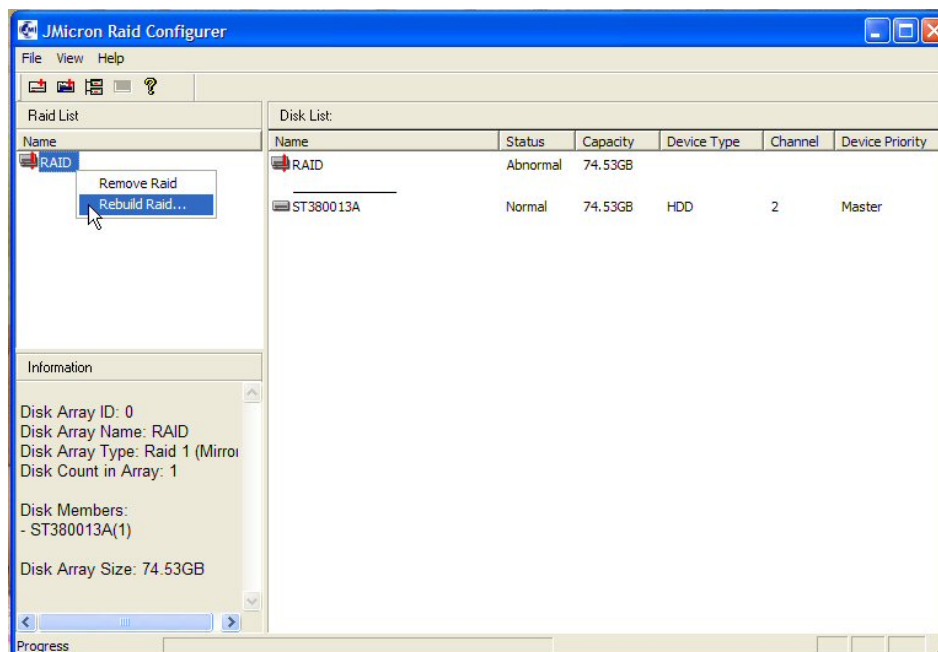
Right-click the name of the disk array that you want to delete and then a popup menu will appear. Users could select "Remove Raid" item to remove the selected disk array.



3.2.4 Rebuilding RAID

RAID 1 can be rebuilt while RAID 0, JBOD cannot be rebuilt. While one disk member of RAID 1 is broken or is unplugged, there is an exclamation mark on the RAID. Users could use a new and robust disk to rebuild the RAID.

Right-click the name of the raid array you want to rebuild and then a popup menu will appear. Users could select the “Rebuild Raid” menu item to rebuild RAID.



3.2.5 Auto-Resynching RAID

While one disk member of RAID 1 is unplugged, JMRaidTool application will auto-resynchronize the raid when the disk is plugged again.