

VIA RAID Installation Guide

1 VIA BIOS RAID Installation Guide	3
1.1 Introduction of RAID	3
1.2 RAID Configuration Precautions	3
1.3 BIOS Configuration Utility	4
1.3.1 Enter BIOS Configuration Utility	4
1.3.2 Create Disk Array	4
1.3.3 Delete Disk Array	7
1.3.4 Select Boot Array	7
2 VIA Windows RAID Installation Guide	9
2.1 VIA Windows RAID Installation Guide for Windows 2000/XP/XP 64-bit Users	9
2.1.1 Create RAID Array	9
2.1.2 Delete Disk Array	11
2.1.3 Check All Disks	12
2.1.4 Verify Mirror Disk	13
2.1.5 Synchronize Mirror Disk	14
2.1.6 Disk Error Detection	15
2.1.7 Duplicate Critical RAID 1 Array	15
2.1.8 Rebuild Broken RAID 1 array	15

2.2 VIA Windows RAID Installation Guide for Windows Vista/Vista 64-bit Users	18
2.2.1 Create Disk Array	18
2.2.2 Remove Array	21
2.2.3 Add/Remove Spare	21
2.2.4 Synchronize Mirror Disk	22
2.2.5 Repair Broken Disk Array	22

1 VIA BIOS RAID Installation Guide

You are allowed to configure RAID functions under BIOS environment.

1.1 Introduction of RAID

VIA VT8237A south bridge chipset integrates RAID controller supporting RAID 0, RAID 1, and JBOD functions with two independent SATA channels. This section will introduce the basic knowledge of RAID.

RAID

The term "RAID" stands for "Redundant Array of Independent Disks", which is a method combining two or more hard disk drives into one logical unit. For optimal performance, please install identical drives of the same model and capacity when creating a RAID set.

RAID 0 (Data Striping)

RAID 0 is called data striping that optimizes two identical hard disk drives to read and write data in parallel, interleaved stacks. It will improve data access and storage since it will double the data transfer rate of a single disk alone while the two hard disks perform the same work as a single drive but at a sustained data transfer rate.

WARNING!

Although RAID 0 function can improve the access performance, it does not provide any fault tolerance. Hot-Plug any HDDs of the RAID 0 Disk will cause data damage or data loss.

RAID 1 (Data Mirroring)

RAID 1 is called data mirroring that copies and maintains an identical image of data from one drive to a second drive. It provides data protection and increases fault tolerance to the entire system since the disk array management software will direct all applications to the surviving drive as it contains a complete copy of the data in the other drive if one drive fails.

JBOD (Spanning)

A spanning disk array is equal to the sum of all drives. Spanning stores data onto a drive until it is full then proceeds to store files onto the next drive in the array. When any member disk fails, it will affect the entire array. JBOD is not really a RAID, and it does not support fault tolerance.

1.2 RAID Configurations Precautions

Please use two new drives if you are creating a RAID 0 (striping) array for performance. It is recommended to use two SATA drives of the same size. If you use two drives of different sizes, the smaller capacity hard disk will be the base storage size for each drive. For example, if one hard disk has an 80GB storage capacity and the other hard disk has 60GB, the maximum storage capacity for the 80GB-drive becomes 60GB, and the total storage capacity for this RAID 0 set is 120GB.

1. You may use two new drives, or use an existing drive and a new drive to create a RAID 1 (mirroring) array for data protection (the new drive must be of the same size or larger than the existing drive). If you use two drives of different sizes, the smaller capacity hard disk will be the base storage size. For example, if one hard disk has an 80GB storage capacity and the other hard disk has 60GB, the maximum storage capacity for the RAID 1 set is 60GB.
2. Please verify the status of your hard disks before you set up your new RAID array.

1.3 BIOS Configuration Utility

1.3.1 Enter BIOS Configuration Utility

After the system powers on, the following information will appear on the screen. Press 'Tab' key to enter BIOS configuration utility.

```
VIA Technologies, Inc. VIA Serial ATA RAID BIOS Setting Utility v1.00
Copyright (C) VIA Technologies, Inc. All Right reserved.

Scan Devices, Please wait...
Press < Tab > key into User Window!
Channel 0 Master: IC35L040AVVA07-0
Channel 1 Master: IC35L040AVVA07-0
```

The main interface of BIOS configuration utility is as below:

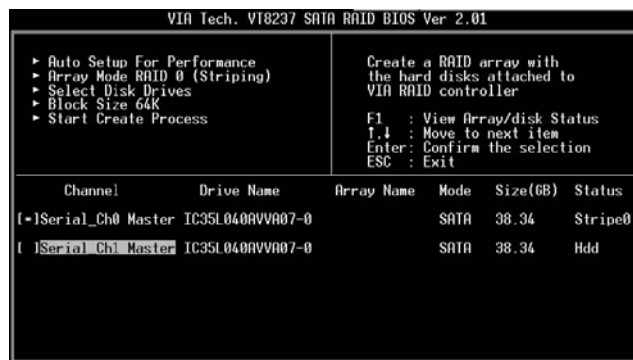
VIA Tech. V18237 SATA RAID BIOS Ver 2.01					
<ul style="list-style-type: none"> > Create Array > Delete Array > Create/Delete Spare > Select Boot Array > Serial Number View 		Create a RAID array with the hard disks attached to VIA RAID controller F1 : View Array/disk Status T,↓ : Move to next item Enter: Confirm the selection ESC : Exit			
Channel	Drive Name	Array Name	Mode	Size(GB)	Status
Serial_Ch0 Master	IC35L040AVVA07-0		SATA	38.34	Hdd
Serial_Ch1 Master	IC35L040AVVA07-0		SATA	38.34	Hdd

1.3.2 Create Disk Array

1. Within the main interface, use the up and down arrow key to highlight the Create Array command and press <Enter> to call out the list of creation steps.
2. Highlight the Array Mode and press <Enter>, then a list of array modes will appear. Just highlight the target array mode that you want to create, and press <Enter> to confirm the selection.



3. There are two methods to create a disk array. One method is "Auto Setup", and another is "Select Disk Drives". Select "Auto Setup" to allow BIOS to select the disk drives and create array automatically. Select "Select Disk Drives" to let user select the array drives manually. When using Select Disk Drives method, the channel column will be activated. Just highlight the target drives that you want to use and press <Enter> to select them respectively. When all drives have been selected, press <Esc> to go back to the creation steps menu.



Create RAID 0

If RAID 0 array is selected in step 2, user can also select a block size for the array. Use the arrow key to highlight the "Block Size" and press <Enter>. Then the list of available block size will popup. The block size can be selected from 4K to 64K Bytes.



Use the arrow key to highlight the Start Create Process and press <Enter>, then a warning message will appear. Press Y to finish the creation, or press N to cancel the creation. Please note that the content of the hard drive will be destroyed after array creation.

Create RAID 1

WARNING!!

Due to the driver issue, currently, you are not allowed to create RAID 1 (Mirror) under BIOS environment if you install Windows Vista/Vista 64-bit OS. If you want to build RAID 1 under Windows Vista/Vista 64-bit OS, please use the RAID software, VIA RAID Tool to create RAID 1. This issue may require driver update. Please visit our website for the updated driver in the near future. (<http://www.asrock.com>)

The data on disk drives will be destroyed if user uses "Auto Setup" to create RAID 1. But you can reserve the data on source drive if you use "Select Disk Drives" to select the source and the mirror drive.



Press "y" to copy data of source to mirror drive. There is a limitation when using this feature. The capacity of mirror drive must be greater or equal to the source drive; otherwise the RAID 1 can't be created and a error message will appear: "Error: mirror's size is smaller than source!!! Press ESC return". If user does not want to duplicate data, the data on the source and the mirror drive will be destroyed.

Create JBOD

The data on disk drives will be destroyed if user uses "Auto Setup" to create a JBOD. However, you can reserve the data on the first disk drive of a JBOD array if you use "Select Disk Drives" to select disk drives



The data on the first disk drive will be reserved and the other disk drives in JBOD will be expanded behind the first disk drive and become free space. Expand Span (JBOD) Array function is not available if VT8237A only supports 2 SATA ports.

1.3.3 Delete Disk Array

User can delete a specific RAID that has been created. Following are the steps to delete a created disk array.

1. Use arrow key to highlight Delete Array item in main menu interface, and press <Enter>. The channel column will be activated.
2. Use arrow key to highlight the target disk drive and press <Enter>. A warning message will appear. Press Y to delete a specific array or press N to cancel.



Delete a disk array will destroy all the data on the disk array except RAID 1. When a RAID 1 is deleted, the data on these two hard disk drives will be reserved and become two normal disks.

1.3.4 Select Boot Array


User can select a disk array as boot device if user wants to boot operating system from an array. Boot disk array may not be selected if user does not boot the Operating System from the disk array. Use the arrow key to highlight the "Select Boot Disk" item then press <Enter>. The channel column will be activated. Just use arrow key to highlight the target disk array then press <Enter>. If you select a disk array that has a boot mark and press <Enter>, then its boot setting will be canceled.

VIA Tech. V18237 SATA RAID BIOS Ver 2.01					
▶ Create Array ▶ Delete Array ▶ Create/Delete Spare ▶ Select Boot Array ▶ Serial Number View			Set/Clear bootable array F1 : View Array/disk Status ↑↓ : Move to next item Enter: Confirm the selection ESC : Exit		
Channel	Drive Name	Array Name	Mode	Size(GB)	Status
(-)Serial_Ch0 Master	IC35L040AVVA07-0	ARRAY 0	SATA	38.34	Boot
(-)Serial_Ch1 Master	IC35L040AVVA07-0	ARRAY 0	SATA	38.34	Boot

2 VIA Windows RAID Installation Guide

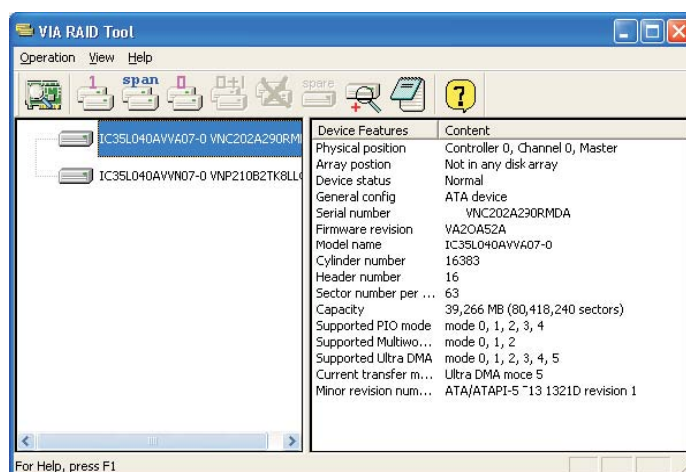
You are allowed to configure RAID functions under Windows environment. The “RAID Software” is a Windows-based software utility with graphical user interface and provides user an easy-operation tool to configure and manage disk drives or disk arrays connected to VT8237 SATA controller. Please read this guide carefully and follow the instructions below to configure and manage RAID functions. For Windows 2000 / XP / XP 64-bit and Windows Vista / Vista 64-bit, there are different installation procedures. Please follow the instructions below according to the OS you install.

2.1 NVIDIA Windows RAID Installation Guide for Windows 2000 / XP / XP 64-bit Users




After GUI software is installed, it will automatically start every time when your Windows OS is started. An icon  will appear in the system tray of the tool bar to indicate that GUI software is currently running.

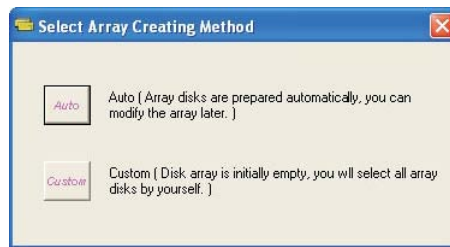


Just double click on the small icon to call out the main interface of the software.



2.1.1 Create Disk Array

1. You may click on one of the three buttons to create different types of disk array—  RAID 1,  Span, and  RAID 0. Then a “Select Array Creating Method” will be prompted.



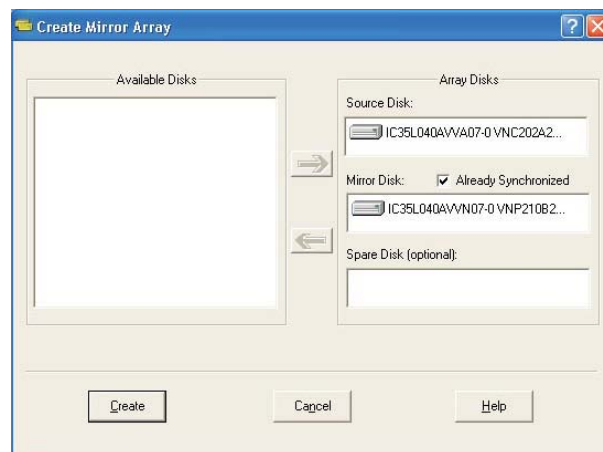
Auto:

The software will configure the available hard disk drives to be a disk array. User can modify the hard disk drives later. It is strongly recommended to use this method.

Custom:

Disk array is arranged by user.

- Click "Auto" button. The "Creating Array" window will pop up. If you select "Custom", the "Available Disks" window will list the available disk drives for array-creating. Select a disk drive and click right arrow button to add the specific disk drive to array. After adding a disk drive, user can also remove the selected disk drive from array. Click the disk drive in "Array Disks" windows, then click left arrow button to remove the selected disk drive.



Press "Create" button to create or "Cancel" button to cancel it.

After you pressed the "Create" button, a warning message will pop up. Click "Yes" to finish the creation of disk array, or "No" to cancel.



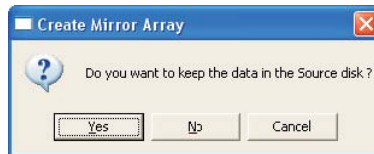
- A message box will pop up to prompt user that the disk array has been created successfully and ask user whether to restart the computer.

Click “Yes” to restart the computer or click “No” to skip restarting. New disk array setting will take effect only after restarting.



Create RAID 1

You can reserve the data on the source drive after clicking “Create” button when you create a RAID 1 array.



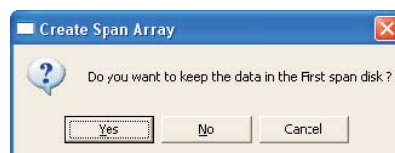
There is a limitation if user wants to keep the data on the source drive the capacity of the mirror drive must be greater or equal to the source drive, otherwise the RAID 1 can't be created.



If user wants to keep data in the source drive, RAID tool will ask user to synchronize the mirror drive after the system's rebooting.

Create JBOD

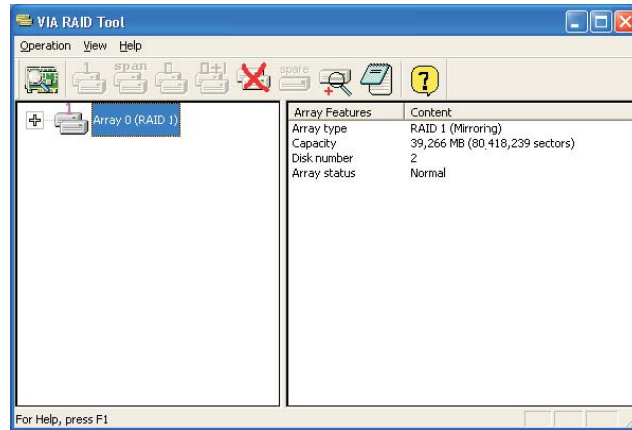
The data in the first disk drive of JBOD array can be reserved when a JBOD array is created.



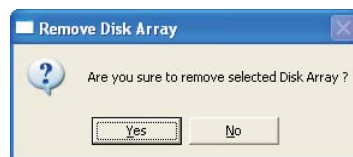
The data on the first disk drive will be reserved and the other disk drives in JBOD will be expanded behind the first disk drive and become free space.

2.1.2 Delete Disk Array

1. Select the disk array that you want to delete from the left  window. Click “Remove Array” button , then a warning message will pop up.



2. Click “Yes” to delete the specific disk array or click “No” to cancel.



3. A message box will pop up to prompt user that the disk array has been deleted successfully and ask user whether to restart the computer. Click “Yes” to restart the computer or click “No” to skip the restarting. New setting will take effect only after restarting.



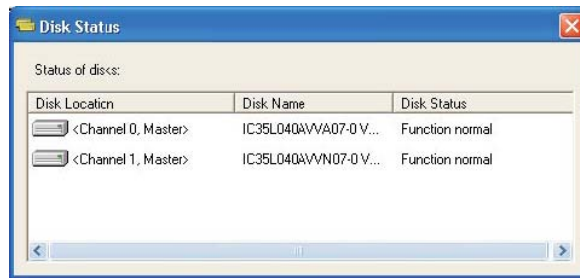
Warning:

Deleting a disk array will destroy all the data on the disk array except RAID 1. When a RAID is deleted, the data on these two hard disk drives will be reserved.

2.1.3 Check All Disks

You can check if all the disk drives work normally by clicking button. After you complete the checking, a dialog window will pop up to show each disk’s current status as following picture.

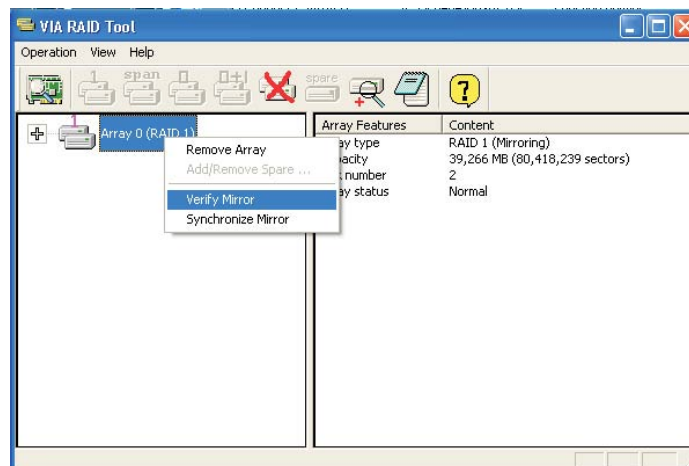
Your hard disk drive must be compatible with ATA/ATAPI-5 specifications and support SMART commands; otherwise the checking will fail.



2.1.4 Verify Mirror Disk


Data on the mirror disk must be the same as its corresponding source disk to provide fault tolerance for RAID 1.

1. Select a RAID 1. Right-click the selected RAID, and then a shortcut menu will appear. Click “Verify Mirror” to verify whether the source and the mirror disks are identical.




2. After executing “verify mirror” command, a dialog will show the verifying process. You can pause or cancel this process at any time. The process may take a long time if the capacity of RAID is large.



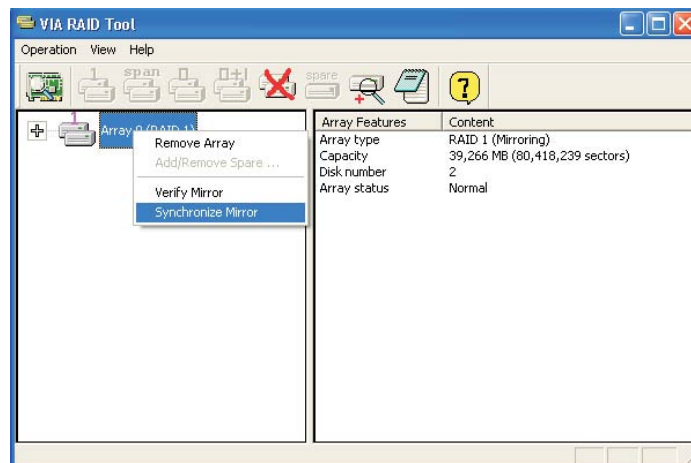
3. When the mirror disk is not identical with the corresponding source disk, the mirror disk will be marked with a “need-sync” icon: . A

“need-sync” mirror disk should be synchronized as soon as possible.

2.1.5 Synchronize Mirror Disk

For RAID 1, it must be synchronized when data on the mirror disk is not identical with its corresponding source disk. Sometimes the data on the mirror disk may be newer than the source disk. For example, the source disk is absent and the mirror disk runs in the tolerance mode. So the exact meaning of “Synchronize Mirror” is to keep the data on a pair of the source and the mirror disks identical. RAID software always marks the mirror disk with a “need-sync” icon  even though the mirror disk may have the correct data.

1. Select RAID 1. Right-click the selected RAID, then a shortcut menu will appear. Click “Synchronize Mirror” to synchronize the source and the mirror disks.



2. When synchronization starts, a dialog will show the process. You can pause or cancel this process at any time.

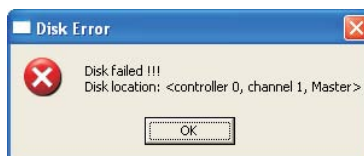


3. A message will pop up when synchronization is finished.



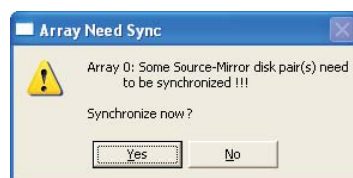
2.1.6 Disk Error Detection

RAID will pop up an error message when the failure or absence of a disk drive is detected.



2.1.7 Duplicate Critical RAID 1 Array

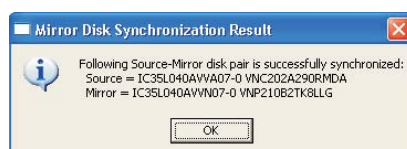
If, during the system-booting, the software detects the inconsistency between the source and the mirror disks of RAID 1, the disk array will be marked as critical status, and the software will automatically prompt user to duplicate the RAID 1 to make the mirror disk consist with the corresponding source disk again.



You may click "Yes" to synchronize now or click "No" to synchronize later.



When the synchronization starts, a dialog will show the process. You can pause or cancel this process at any time. If you cancel the synchronization process, the RAID is on "need-sync" condition. You should synchronize again to guarantee the data are identical between the source and the mirror disk drives. A message will pop up when synchronization is finished.



2.1.8 Rebuild Broken RAID 1 array

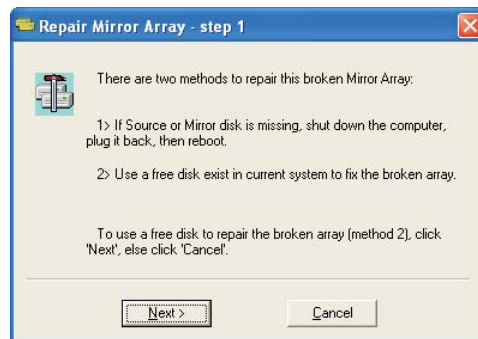
If, during the system-booting, the failure or absence of any member disk of RAID is detected, the array will be marked as broken status. If broken

RAID 1 array is detected by the RAID software, it will indicate a serial steps to repair this problem.

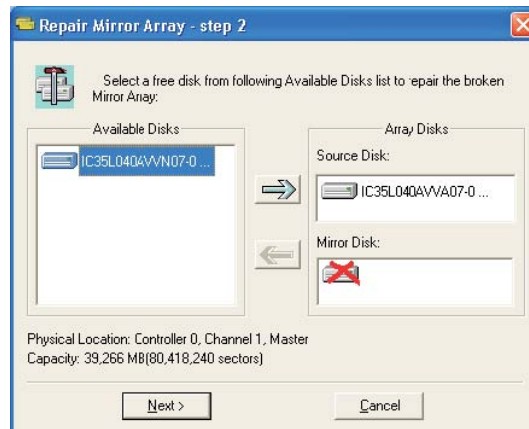
1. A dialog box will pop up to indicate the RAID is broken. Click Yes.

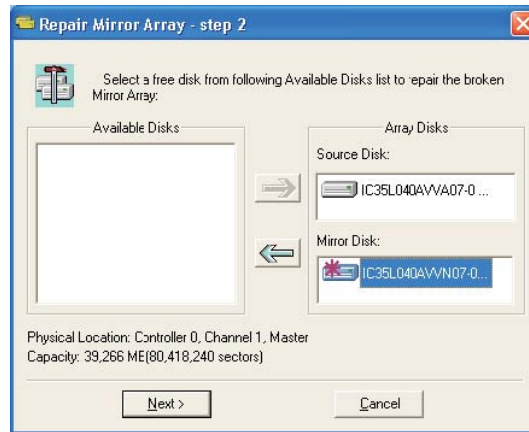


2. Then another dialog box will pop up. If the source or the mirror disk drive is unplugged only, click "Cancel" to stop rebuilding step. Shut down the system. Plug the absent disk drive, and then reboot the system. If the original disk drive is broken-down, you may plug a new disk drive then reboot the system. Click "Next" to the next step.



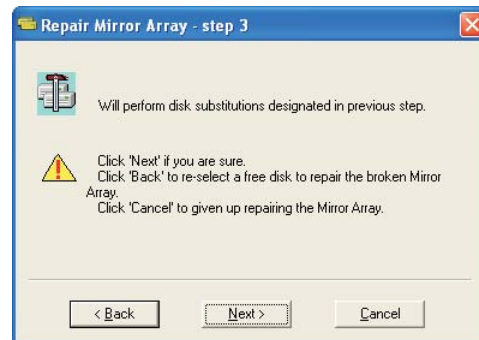
3. Select a disk drive from "Available Disks" and click  button to replace the broken-down one, and then click "Next".



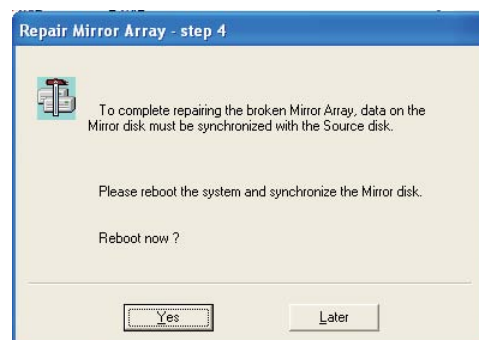


4. A warning message will pop up. If you want to rebuild the RAID by using the disk drive that you selected in the previous step, click "Next".

Warning: The data on the selected disk drive will be lost.




5. Reboot the system.



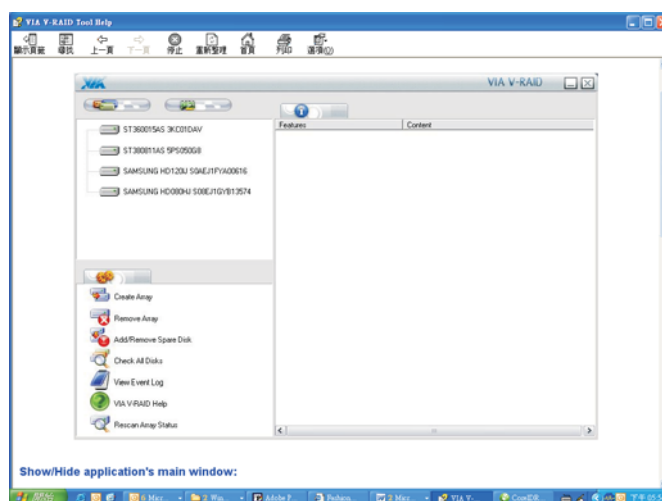
6. This RAID is marked as a critical RAID. The RAID software will do the "Duplicating Critical RAID 1" process.

2.2 NVIDIA Windows RAID Installation Guide for Windows Vista / Vista 64-bit Users


After GUI software is installed, it will automatically start every time when your Windows OS is started. An icon  will appear in the system tray of the tool bar to indicate that GUI software is currently running.



Just double click on the small icon to call out the main interface of the software.



2.2.1 Create Disk Array

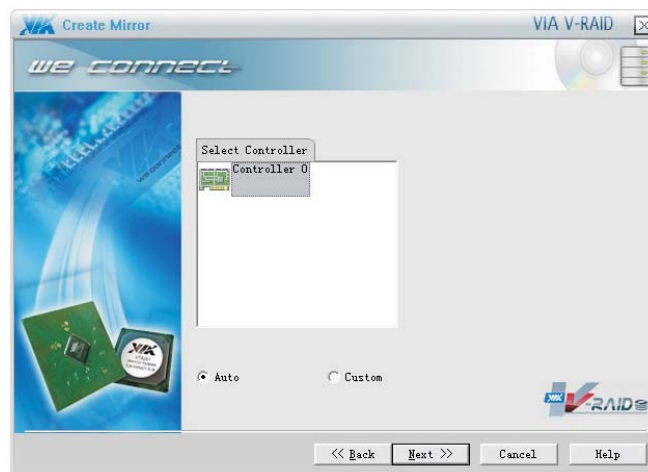
To create a RAID disk array, you can click on “Create Array”  in the Operation block. If the number of available free disks is enough for a RAID mode, you can finish your creation. When free disks (disks not in any disk array) are selected to create a disk array, original data on these disks maybe lost, so be sure these data will never be needed or conduct necessary back-ups. You are allowed to select RAID 1 (Mirror), RAID 0 (Stripe), Span (JBOD), RAID 5 or RAID 0+1. Here we take RAID 1 (Mirror) for example. For other types of RAID disk array, the operation procedures are similar. Please refer to below steps for details of creating a RAID disk array.

A. Select RAID Mode



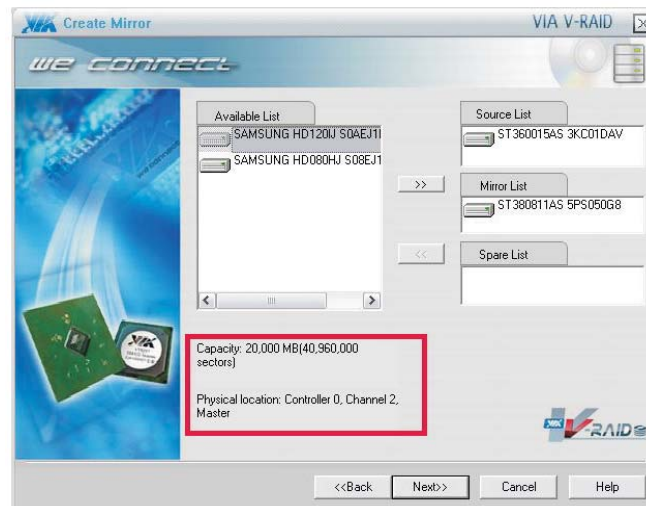
Select one type by clicking corresponding item and click <Next>.

B. Select Controller and Creating Method



Select a controller to create array. As soon as you select one controller, the disks you will select for this array will be limited on this controller. Besides, you have to select the creation method in this step. Selecting "Auto", the tool will select array disks for you, and you don't need to do anything. Selecting "Custom", tool will list all available disks in the available disks list, and you have to select disks for the array manually. You may adjust the selected disks manually in both cases.

C. Select Array Disks



You need to select the disks for the array you are creating. Please select an available disk from the left side list, then click the Right-Arrow button to add a disk into array. Array disks will be added in the order of Source, Mirror and Spare disk. A Spare disk can also be added or removed after a Mirror array is created. To remove a disk from array, please click the array disk, then click the Left-Arrow button. Whenever a disk (array disk or available disk) is selected, its capacity and physical location will be shown in the bottom-left corner.

D. Keep OS Data Information (Optional)

When you selected the disk on which the Operating System is running to create a RAID array, the information will be prompted to inform you that tool will keep the OS disk data for you.

E. Keep Source Data Information (Optional)

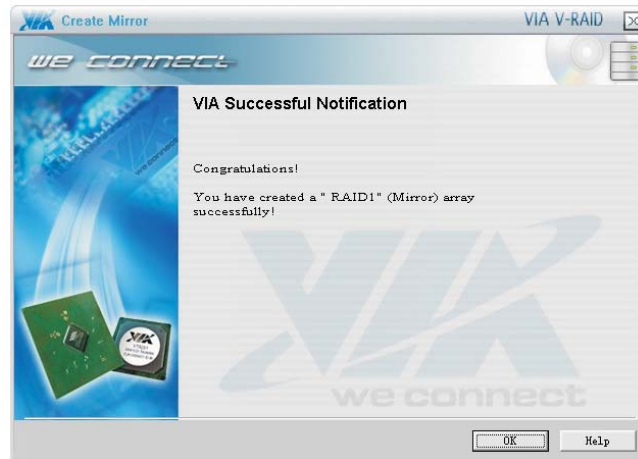
If you didn't select the disk on which the Operating System is running to create a RAID array, the information will be prompted to allow you keeping the data on the source disk.

F. Final Confirmation



As soon as you click the <Next> button, the data on the hardware disk maybe destroyed permanently. So please do confirm your data, and backup the important data before clicking <Next> button.

G. Successful Information



This step informs you that you have create an array successfully.

2.2.2 Remove Array



To remove a disk array, you can click on “Remove Array” in the Operation block. If there are arrays in current system, you can finish your removing. You can also remove an array by shifting top-left block to device tree, right-clicking the upper-most level array node and clicking “Remove Array” on the pop-up shortcut menu. Then follow the instructions on the screen to remove array.

2.2.3 Add/Remove Spare

This function is specified for RAID1 (Mirroring) disk array. A Spare disk is a special array disk that will be used to replace the Source or Mirror disk when one of them meets disk failure. To Add a Spare disk to or Remove Spare from a RAID1 disk array,



you can click “Add/ Remove Spare” in the Operation block. If there are RAID1 arrays in the current system, the “Add/ Remove Spare” wizard will guide you to finish this operation. You can also shift the top-left block of main application window to Array View/Tree, select the upper-most level tree node of the RAID 1 array and right click the array node and click “Add/ Remove Spare” on the pop-up shortcut menu. Then follow the instructions on the screen to add/remove array.


2.2.4 Synchronize Mirror Disk

Synchronize Mirror Disk forces data on the mirror disk to be identical with the source disk by copying the data from the one with newer data to the other disk. Note that the source disk does not always have the latest data. Please follow the instructions on the screen to synchronize mirror array.

2.2.5 Repair Broken Disk Array

If some disk(s) in a disk array can not work any more (due to disk failure or disk absence), the disk array will be in broken status.



At this time, the array's icon in the Array View will look like . To repair the broken disk array, right click the array icon and click "Repair Broken Array" on the pop-up shortcut menu. Note that the Spare disk in a RAID1 array is only a replacement disk in case of a Source or Mirror disk failure. So the failure or absence of a Spare disk does not affect the RAID1 array.