

# ASRock®

## FM2A58M-DG3+

User Manual



Version 1.0

Published April 2014

Copyright©2014 ASRock INC. All rights reserved.

## Copyright Notice:

No part of this documentation may be reproduced, transcribed, transmitted, or translated in any language, in any form or by any means, except duplication of documentation by the purchaser for backup purpose, without written consent of ASRock Inc.

Products and corporate names appearing in this documentation may or may not be registered trademarks or copyrights of their respective companies, and are used only for identification or explanation and to the owners' benefit, without intent to infringe.

## Disclaimer:

Specifications and information contained in this documentation are furnished for informational use only and subject to change without notice, and should not be constructed as a commitment by ASRock. ASRock assumes no responsibility for any errors or omissions that may appear in this documentation.

With respect to the contents of this documentation, ASRock does not provide warranty of any kind, either expressed or implied, including but not limited to the implied warranties or conditions of merchantability or fitness for a particular purpose.

In no event shall ASRock, its directors, officers, employees, or agents be liable for any indirect, special, incidental, or consequential damages (including damages for loss of profits, loss of business, loss of data, interruption of business and the like), even if ASRock has been advised of the possibility of such damages arising from any defect or error in the documentation or product.



This device complies with Part 15 of the FCC Rules. Operation is subject to the following two conditions:

- (1) this device may not cause harmful interference, and
- (2) this device must accept any interference received, including interference that may cause undesired operation.

## CALIFORNIA, USA ONLY

The Lithium battery adopted on this motherboard contains Perchlorate, a toxic substance controlled in Perchlorate Best Management Practices (BMP) regulations passed by the California Legislature. When you discard the Lithium battery in California, USA, please follow the related regulations in advance.

“Perchlorate Material-special handling may apply, see [www.dtsc.ca.gov/hazardouswaste/perchlorate](http://www.dtsc.ca.gov/hazardouswaste/perchlorate)”

**ASRock Website:** <http://www.asrock.com>

# Contents

<b>1. Introduction</b>	<b>1</b>
1.1 Package Contents	1
1.2 Specifications	2
1.3 Motherboard Layout	6
1.4 I/O Panel	8
<b>2. Installation</b>	<b>9</b>
2.1 CPU Installation	10
2.2 Installation of CPU Fan and Heatsink	11
2.3 Installation of Memory Modules (DIMM)	12
2.4 Expansion Slots (PCI and PCI Express Slots)	14
2.5 Jumpers Setup	15
2.7 AMD Dual Graphics Operation Guide	20
<b>3. Software and Utilities Operation</b>	<b>22</b>
3.1 Installing Drivers	22
3.2 A-Tuning	23
3.3 Start8	27
<b>4. UEFI SETUP UTILITY</b>	<b>30</b>
4.1 Introduction	30
4.1.1 UEFI Menu Bar	30
4.1.2 Navigation Keys	31
4.2 Main Screen	31
4.3 OC Tweaker Screen	32

4.4	Advanced Screen	35
4.4.1	CPU Configuration	36
4.4.2	North Bridge Configuration	37
4.4.3	South Bridge Configuration	38
4.4.4	Storage Configuration	39
4.4.5	Super IO Configuration	40
4.4.6	ACPI Configuration	41
4.4.7	USB Configuration	43
4.5	Tool	45
4.6	Hardware Health Event Monitoring Screen	48
4.7	Boot Screen	49
4.8	Security Screen	51
4.9	Exit Screen	52

# 1. Introduction

Thank you for purchasing ASRock **FM2A58M-DG3+** motherboard, a reliable motherboard produced under ASRock's consistently stringent quality control. It delivers excellent performance with robust design conforming to ASRock's commitment to quality and endurance.

In this documentation, Chapter 1 and 2 contains the introduction of the motherboard and step-by-step installation guides. Chapter 3 contains the operation guide of the software and utilities. Chapter 4 contains the configuration guide of the BIOS setup.



Because the motherboard specifications and the BIOS software might be updated, the content of this manual will be subject to change without notice. In case any modifications of this manual occur, the updated version will be available on ASRock website without further notice. You may find the latest VGA cards and CPU support lists on ASRock website as well. ASRock website <http://www.asrock.com>

If you require technical support related to this motherboard, please visit our website for specific information about the model you are using.

[www.asrock.com/support/index.asp](http://www.asrock.com/support/index.asp)

## 1.1 Package Contents

ASRock **FM2A58M-DG3+** Motherboard (Micro ATX Form Factor)

ASRock **FM2A58M-DG3+** Quick Installation Guide

ASRock **FM2A58M-DG3+** Support CD

2 x Serial ATA (SATA) Data Cables (Optional)

1 x I/O Panel Shield

## 1.2 Specifications

- |                 |  |
|-----------------|--|
| <b>Platform</b> | <ul style="list-style-type: none"><li>• Micro ATX Form Factor</li><li>• All Solid Capacitor design</li><li>• High Density Glass Fabric PCB</li></ul> |
|-----------------|--|

- |            |  |
|------------|--|
| <b>CPU</b> | <ul style="list-style-type: none"><li>• Supports Socket FM2+ 95W / FM2 100W processors</li></ul> |
|------------|--|

- |                |   |
|----------------|---|
| <b>Chipset</b> | <ul style="list-style-type: none"><li>• AMD A58 FCH (Bolton-D2)</li></ul> |
|----------------|---|

- |               |   |
|---------------|---|
| <b>Memory</b> | <ul style="list-style-type: none"><li>• Dual Channel DDR3 Memory Technology</li><li>• 2 x DDR3 DIMM Slots</li><li>• Supports DDR3 2400+(OC)/2133(OC)/1866 (OC)/1600/1333/1066 non-ECC, un-buffered memory <b>(see CAUTION 1)</b></li><li>• Max. capacity of system memory: 32GB <b>(see CAUTION 2)</b></li><li>• Supports Intel® Extreme Memory Profile (XMP) 1.3 / 1.2</li><li>• Supports AMD Memory Profile Technology (AMP) up to AMP 2400</li></ul> |
|---------------|---|

- |                       |   |
|-----------------------|---|
| <b>Expansion Slot</b> | <ul style="list-style-type: none"><li>• 1 x PCI Express 3.0 x16 Slot (PCIe1@ x16 mode)</li><li>* PCIe 3.0 is only supported with FM2+ CPU. With FM2 CPU, it only supports PCIe 2.0.</li><li>• 1 x PCI Express 2.0 x1 Slot</li><li>• 1 x PCI Slot</li><li>• Supports AMD Dual Graphics</li></ul> |
|-----------------------|---|

- |                 |  |
|-----------------|--|
| <b>Graphics</b> | <ul style="list-style-type: none"><li>• Integrated AMD Radeon™ R7/R5 Series Graphics in A-series APU</li><li>• DirectX 11.1, Pixel Shader 5.0 with FM2+ CPU. DirectX 11, Pixel Shader 5.0 with FM2 CPU.</li><li>• Max. shared memory 2GB</li><li>• Dual graphics output options: support DVI-D and D-Sub by independent display controllers</li><li>• Supports Dual-link DVI-D with max. resolution up to 2560x1600 @ 60Hz</li></ul> |
|-----------------|--|

- Supports D-Sub with max. resolution up to 1920x1200 @ 60Hz
- Supports AMD Steady Video™ 2.0: New video post processing capability for automatic jitter reduction on home/online video
- Supports HDCP with DVI-D Port
- Supports Full HD 1080p Blu-ray (BD) playback with DVI-D Port

**Audio**

- 5.1 CH HD Audio (Realtek ALC662 Audio Codec)
- Supports Surge Protection (ASRock Full Spike Protection)

**LAN**

- PCIE x1 Gigabit LAN 10/100/1000 Mb/s
- Realtek RTL8111GR
- Supports Wake-On-WAN (**see CAUTION 3**)
- Supports Wake-On-LAN
- Supports Lightning/ESD Protection (ASRock Full Spike Protection)
- Supports LAN Cable Detection
- Supports Energy Efficient Ethernet 802.3az
- Supports PXE

**Rear  
Panel I/O**

- 1 x PS/2 Mouse/Keyboard Port
- 1 x D-Sub Port
- 1 x DVI-D Port
- 6 x USB 2.0 Ports (Supports ESD Protection (ASRock Full Spike Protection))
- 1 x RJ-45 LAN Port with LED (ACT/LINK LED and SPEED LED)
- HD Audio Jacks: Line in / Front Speaker / Microphone

**Storage**

- 4 x SATA2 3.0 Gb/s Connectors, support RAID (RAID 0, RAID 1 and RAID 10), NCQ, AHCI and Hot Plug

**Con-  
nec-  
tor**

- 1 x Print Port Header
- 1 x COM Port Header
- 1 x Chassis Intrusion Header
- 1 x TPM Header
- 1 x CPU Fan Connector (4-pin)

- 1 x Chassis Fan Connector (4-pin)
- 1 x Power Fan Connector (3-pin)
- 1 x 24 pin ATX Power Connector
- 1 x 4 pin 12V Power Connector
- 1 x Front Panel Audio Connector
- 2 x USB 2.0 Headers (Support 4 USB 2.0 ports)  
(Supports ESD Protection (ASRock Full Spike Protection))

#### **BIOS Feature**

- 64Mb AMI UEFI Legal BIOS with GUI support
- Supports "Plug and Play"
- ACPI 1.1 Compliant wake up events
- Supports jumperfree
- SMBIOS 2.3.1 support
- DRAM, CPU Voltage multi-adjustment

#### **Hardware Monitor**

- CPU temperature sensing
- Chassis temperature sensing
- CPU Fan Tachometer
- Chassis Fan Tachometer
- CPU/Chassis Quiet Fan
- CPU/Chassis Fan multi-speed control
- CASE OPEN detection
- Voltage monitoring: +12V, +5V, +3.3V, Vcore

#### **OS**

- Microsoft® Windows® 10 32-bit / 10 64-bit / 8.1 32-bit / 8.1 64-bit / 8 32-bit / 8 64-bit / 7 32-bit / 7 64-bit
- \* For the updated Windows® 10 driver, please visit ASRock's website for details: <http://www.asrock.com>
- \* Carrizo FM2r2 processor supports Windows® 10 64-bit / 8.1 64-bit / 7 32-bit / 7 64-bit only.

#### **Certifications**

- FCC, CE, WHQL
- ErP/EuP Ready (ErP/EuP ready power supply is required)

\* For detailed product information, please visit our website: <http://www.asrock.com>



**WARNING**

Please realize that there is a certain risk involved with overclocking, including adjusting the setting in the BIOS, applying Untied Overclocking Technology, or using third-party overclocking tools. Overclocking may affect your system's stability, or even cause damage to the components and devices of your system. It should be done at your own risk and expense. We are not responsible for possible damage caused by overclocking.

**CAUTION!**

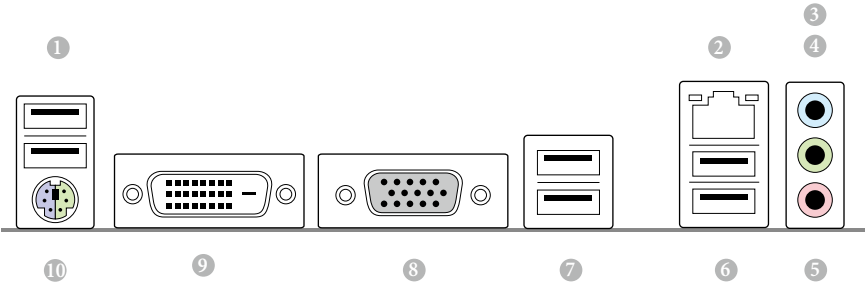
1. Whether 2400/2133/1866/1600MHz memory speed is supported depends on the CPU you adopt. If you want to adopt DDR3 2400/2133/1866/1600 memory module on this motherboard, please refer to the memory support list on our website for the compatible memory modules.  
ASRock website <http://www.asrock.com>
2. Due to the operating system limitation, the actual memory size may be less than 4GB for the reservation for system usage under Windows® 10 / 8.1 / 8 / 7. For Windows® 64-bit OS with 64-bit CPU, there is no such limitation. You can use ASRock XFast RAM to utilize the memory that Windows® cannot use.
3. Wake-On-WAN allows you to wake up this system from remote mobile devices, such as smart phones, tables, or other PCs. It needs third-party softwares and applications to utilize this feature.

The image shows the top view of an ASRock FM2A58M-DG3+ motherboard. Key components and their locations are labeled as follows:

- Chipset:** AMD A58 (Bolton-D2) Chipset
- Memory:** DDR3\_A1 (64 bit, 240-pin module), DDR3\_B1 (64 bit, 240-pin module)
- Storage:** SATA\_1, SATA\_2, SATA\_3, SATA\_4
- Connectivity:** USB 2.0 (T: USB3, B: USB4), LAN, Super I/O
- Other Components:** CMOS BATTERY, 64Mb BIOS, AUDIO CODEC, SPDIF OUT, SPDIF IN, SPDIF OUT
- Expansion Slots:** PCI Express 3.0, PCI Express 2.0
- Other Labels:** RoHS, USB 2.0, USB 3.0, USB 4.0, USB 5.0, USB 6.0, USB 7.0, USB 8.0, USB 9.0, USB 10.0, USB 11.0, USB 12.0, USB 13.0, USB 14.0, USB 15.0, USB 16.0, USB 17.0, USB 18.0, USB 19.0, USB 20.0, USB 21.0, USB 22.0, USB 23.0, USB 24.0, USB 25.0, USB 26.0, USB 27.0, USB 28.0, USB 29.0, USB 30.0, USB 31.0, USB 32.0, USB 33.0, USB 34.0, USB 35.0, USB 36.0, USB 37.0, USB 38.0, USB 39.0, USB 40.0, USB 41.0, USB 42.0, USB 43.0, USB 44.0, USB 45.0, USB 46.0, USB 47.0, USB 48.0, USB 49.0, USB 50.0, USB 51.0, USB 52.0, USB 53.0, USB 54.0, USB 55.0, USB 56.0, USB 57.0, USB 58.0, USB 59.0, USB 60.0, USB 61.0, USB 62.0, USB 63.0, USB 64.0, USB 65.0, USB 66.0, USB 67.0, USB 68.0, USB 69.0, USB 70.0, USB 71.0, USB 72.0, USB 73.0, USB 74.0, USB 75.0, USB 76.0, USB 77.0, USB 78.0, USB 79.0, USB 80.0, USB 81.0, USB 82.0, USB 83.0, USB 84.0, USB 85.0, USB 86.0, USB 87.0, USB 88.0, USB 89.0, USB 90.0, USB 91.0, USB 92.0, USB 93.0, USB 94.0, USB 95.0, USB 96.0, USB 97.0, USB 98.0, USB 99.0, USB 100.0, USB 101.0, USB 102.0, USB 103.0, USB 104.0, USB 105.0, USB 106.0, USB 107.0, USB 108.0, USB 109.0, USB 110.0, USB 111.0, USB 112.0, USB 113.0, USB 114.0, USB 115.0, USB 116.0, USB 117.0, USB 118.0, USB 119.0, USB 120.0, USB 121.0, USB 122.0, USB 123.0, USB 124.0, USB 125.0, USB 126.0, USB 127.0, USB 128.0, USB 129.0, USB 130.0, USB 131.0, USB 132.0, USB 133.0, USB 134.0, USB 135.0, USB 136.0, USB 137.0, USB 138.0, USB 139.0, USB 140.0, USB 141.0, USB 142.0, USB 143.0, USB 144.0, USB 145.0, USB 146.0, USB 147.0, USB 148.0, USB 149.0, USB 150.0, USB 151.0, USB 152.0, USB 153.0, USB 154.0, USB 155.0, USB 156.0, USB 157.0, USB 158.0, USB 159.0, USB 160.0, USB 161.0, USB 162.0, USB 163.0, USB 164.0, USB 165.0, USB 166.0, USB 167.0, USB 168.0, USB 169.0, USB 170.0, USB 171.0, USB 172.0, USB 173.0, USB 174.0, USB 175.0, USB 176.0, USB 177.0, USB 178.0, USB 179.0, USB 180.0, USB 181.0, USB 182.0, USB 183.0, USB 184.0, USB 185.0, USB 186.0, USB 187.0, USB 188.0, USB 189.0, USB 190.0, USB 191.0, USB 192.0, USB 193.0, USB 194.0, USB 195.0, USB 196.0, USB 197.0, USB 198.0, USB 199.0, USB 200.0, USB 201.0, USB 202.0, USB 203.0, USB 204.0, USB 205.0, USB 206.0, USB 207.0, USB 208.0, USB 209.0, USB 210.0, USB 211.0, USB 212.0, USB 213.0, USB 214.0, USB 215.0, USB 216.0, USB 217.0, USB 218.0, USB 219.0, USB 220.0, USB 221.0, USB 222.0, USB 223.0, USB 224.0, USB 225.0, USB 226.0, USB 227.0, USB 228.0, USB 229.0, USB 230.0, USB 231.0, USB 232.0, USB 233.0, USB 234.0, USB 235.0, USB 236.0, USB 237.0, USB 238.0, USB 239.0, USB 240.0, USB 241.0, USB 242.0, USB 243.0, USB 244.0, USB 245.0, USB 246.0, USB 247.0, USB 248.0, USB 249.0, USB 250.0, USB 251.0, USB 252.0, USB 253.0, USB 254.0, USB 255.0, USB 256.0, USB 257.0, USB 258.0, USB 259.0, USB 260.0, USB 261.0, USB 262.0, USB 263.0, USB 264.0, USB 265.0, USB 266.0, USB 267.0, USB 268.0, USB 269.0, USB 270.0, USB 271.0, USB 272.0, USB 273.0, USB 274.0, USB 275.0, USB 276.0, USB 277.0, USB 278.0, USB 279.0, USB 280.0, USB 281.0, USB 282.0, USB 283.0, USB 284.0, USB 285.0, USB 286.0, USB 287.0, USB 288.0, USB 289.0, USB 290.0, USB 291.0, USB 292.0, USB 293.0, USB 294.0, USB 295.0, USB 296.0, USB 297.0, USB 298.0, USB 299.0, USB 300.0, USB 301.0, USB 302.0, USB 303.0, USB 304.0, USB 305.0, USB 306.0, USB 307.0, USB 308.0, USB 309.0, USB 310.0, USB 311.0, USB 312.0, USB 313.0, USB 314.0, USB 315.0, USB 316.0, USB 317.0, USB 318.0, USB 319.0, USB 320.0, USB 321.0, USB 322.0, USB 323.0, USB 324.0, USB 325.0, USB 326.0, USB 327.0, USB 328.0, USB 329.0, USB 330.0, USB 331.0, USB 332.0, USB 333.0, USB 334.0, USB 335.0, USB 336.0, USB 337.0, USB 338.0, USB 339.0, USB 340.0, USB 341.0, USB 342.0, USB 343.0, USB 344.0, USB 345.0, USB 346.0, USB 347.0, USB 348.0, USB 349.0, USB 350.0, USB 351.0, USB 352.0, USB 353.0, USB 354.0, USB 355.0, USB 356.0, USB 357.0, USB 358.0, USB 359.0, USB 360.0, USB 361.0, USB 362.0, USB 363.0, USB 364.0, USB 365.0, USB 366.0, USB 367.0, USB 368.0, USB 369.0, USB 370.0, USB 371.0, USB 372.0, USB 373.0, USB 374.0, USB 375.0, USB 376.0, USB 377.0, USB 378.0, USB 379.0, USB 380.0, USB 381.0, USB 382.0, USB 383.0, USB 384.0, USB 385.0, USB 386.0, USB 387.0, USB 388.0, USB 389.0, USB 390.0, USB 391.0, USB 392.0, USB 393.0, USB 394.0, USB 395.0, USB 396.0, USB 397.0, USB 398.0, USB 399.0, USB 400.0, USB 401.0, USB 402.0, USB 403.0, USB 404.0, USB 405.0, USB 406.0, USB 407.0, USB 408.0, USB 409.0, USB 410.0, USB 411.0, USB 412.0, USB 413.0, USB 414.0, USB 415.0, USB 416.0, USB 417.0, USB 418.0, USB 419.0, USB 420.0, USB 421.0, USB 422.0, USB 423.0, USB 424.0, USB 425.0, USB 426.0, USB 427.0, USB 428.0, USB 429.0, USB 430.0, USB 431.0, USB 432.0, USB 433.0, USB 434.0, USB 435.0, USB 436.0, USB 437.0, USB 438.0, USB 439.0, USB 440.0, USB 441.0, USB 442.0, USB 443.0, USB 444.0, USB 445.0, USB 446.0, USB 447.0, USB 448.0, USB 449.0, USB 450.0, USB 451.0, USB 452.0, USB 453.0, USB 454.0, USB 455.0, USB 456.0, USB 457.0, USB 458.0, USB 459.0, USB 460.0, USB 461.0, USB 462.0, USB 463.0, USB 464.0, USB 465.0, USB 466.0, USB 467.0, USB 468.0, USB 469.0, USB 470.0, USB 471.0, USB 472.0, USB 473.0, USB 474.0, USB 475.0, USB 476.0, USB 477.0, USB 4

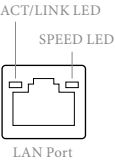
No.	Description
1	ATX 12V Power Connector (ATX12V1)
2	CPU Fan Connector (CPU_FAN1)
3	2 x 240-pin DDR3 DIMM Slots (DDR3_A1, DDR3_B1)
4	TPM Header (TPMS1)
5	ATX Power Connector (ATXPWR1)
6	SATA2 Connector (SATA_2)
7	SATA2 Connector (SATA_4)
8	SATA2 Connector (SATA_3)
9	SATA2 Connector (SATA_1)
10	Chassis Speaker Header (SPEAKER1)
11	System Panel Header (PANEL1)
12	USB 2.0 Header (USB_9_10)
13	USB 2.0 Header (USB_7_8)
14	Chassis Fan Connector (CHA_FAN1)
15	Clear CMOS Jumper (CLRCMOS1)
16	Print Port Header (LPT1)
17	COM Port Header (COM1)
18	Chassis Intrusion Header (CI1)
19	Front Panel Audio Header (HD_AUDIO1)
20	Power Fan Connector (PWR_FAN1)

1.4 I/O Panel



No.	Description	No.	Description
1	USB 2.0 Ports (USB_1_2)	6	USB 2.0 Ports (USB_5_6)
2	LAN RJ-45 Port*	7	USB 2.0 Ports (USB_3_4)
3	Line In (Light Blue)	8	D-Sub Port
4	Front Speaker (Lime)	9	DVI-D Port
5	Microphone (Pink)	10	PS/2 Mouse/Keyboard Port

\* There are two LEDs on the LAN port. Please refer to the table below for the LAN port LED indications.



Activity / Link LED		Speed LED	
Status	Description	Status	Description
Off	No Link	Off	10Mbps connection
Blinking	Data Activity	Orange	100Mbps connection
On	Link	Green	1Gbps connection

## 2. Installation

This is a Micro ATX form factor motherboard. Before you install the motherboard, study the configuration of your chassis to ensure that the motherboard fits into it.

### Pre-installation Precautions

Take note of the following precautions before you install motherboard components or change any motherboard settings.

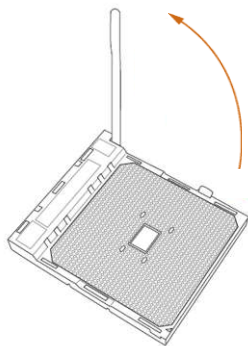


Before you install or remove any component, ensure that the power is switched off or the power cord is detached from the power supply. Failure to do so may cause severe damage to the motherboard, peripherals, and/or components.

1. Unplug the power cord from the wall socket before touching any component.
2. To avoid damaging the motherboard components due to static electricity, **NEVER** place your motherboard directly on the carpet or the like. Also remember to use a grounded wrist strap or touch a safety grounded object before you handle components.
3. Hold components by the edges and do not touch the ICs.
4. Whenever you uninstall any component, place it on a grounded anti-static pad or in the bag that comes with the component.
5. When placing screws into the screw holes to secure the motherboard to the chassis, please do not over-tighten the screws! Doing so may damage the motherboard.

## 2.1 CPU Installation

Step 1. Unlock the socket by lifting the lever up to a 90° angle.



Step 2. Position the CPU directly above the socket such that the CPU corner with the golden triangle matches the socket corner with a small triangle.

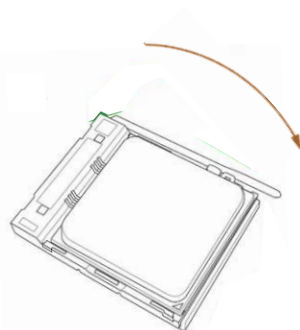
Step 3. Carefully insert the CPU into the socket until it fits in place.



The CPU fits only in one correct orientation. DO NOT force the CPU into the socket to avoid bending of the pins.



Step 4. When the CPU is in place, press it firmly on the socket while you push down the socket lever to secure the CPU. The lever clicks on the side tab to indicate that it is locked.



## 2.2 Installation of CPU Fan and Heatsink

After you install the CPU into this motherboard, it is necessary to install a larger heatsink and cooling fan to dissipate heat. You also need to spray thermal grease between the CPU and the heatsink to improve heat dissipation. Make sure that the CPU and the heatsink are securely fastened and in good contact with each other. Then connect the CPU fan to the CPU FAN connector (CPU\_FAN1, see Page 10, No. 2). For proper installation, please kindly refer to the instruction manuals of the CPU fan and the heatsink.

## 2.3 Installation of Memory Modules (DIMM)

This motherboard provides two 240-pin DDR3 (Double Data Rate 3) DIMM slots, and supports Dual Channel Memory Technology.



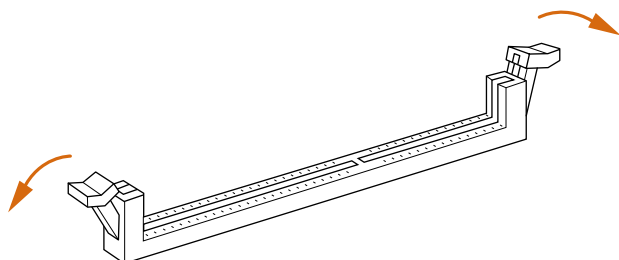
1. For dual channel configuration, you always need to install identical (the same brand, speed, size and chip-type) DDR3 DIMM pairs.
2. It is unable to activate Dual Channel Memory Technology with only one memory module installed.
3. It is not allowed to install a DDR or DDR2 memory module into a DDR3 slot; otherwise, this motherboard and DIMM may be damaged.



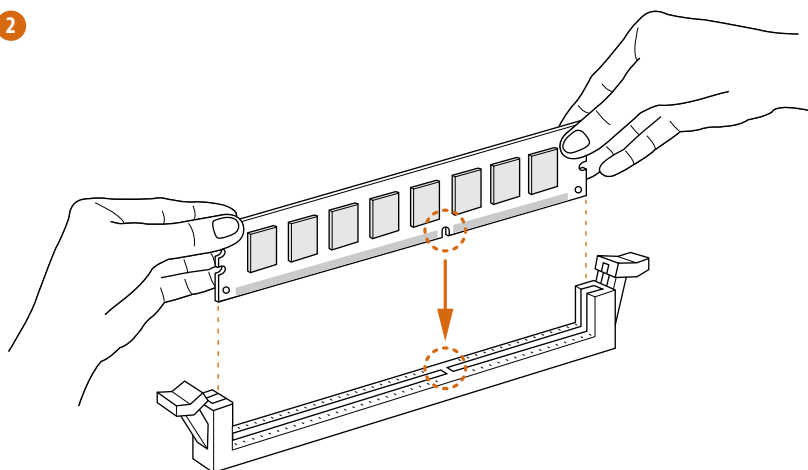
*The DIMM only fits in one correct orientation. It will cause permanent damage to the motherboard and the DIMM if you force the DIMM into the slot at incorrect orientation.*



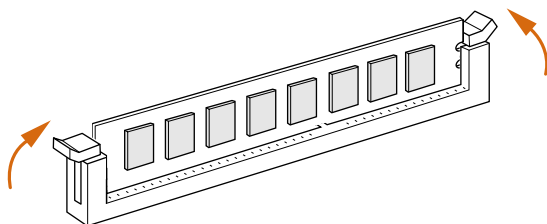
1



2



3



## 2.4 Expansion Slots (PCI and PCI Express Slots)

There are 1 PCI slot and 2 PCI Express slots on this motherboard.



*Before installing an expansion card, please make sure that the power supply is switched off or the power cord is unplugged. Please read the documentation of the expansion card and make necessary hardware settings for the card before you start the installation.*

**PCI Slot:** PCI slot is used to install expansion cards that have the 32-bit PCI interface.

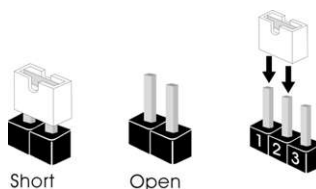
**PCIE Slots:**



PCIE1 (PCIe 3.0 x16 slot) is used for PCI Express x16 lane width graphics cards

PCIE2 (PCIe 2.0 x1 slot) is used for PCI Express cards with x1 lane width cards

## 2.5 Jumpers Setup

The illustration shows how jumpers are setup. When the jumper cap is placed on pins, the jumper is “Short”. If no jumper cap is placed on pins, the jumper is “Open”. The illustration shows a 3-pin jumper whose pin1 and pin2 are “Short” when jumper cap is placed on these 2 pins.



Jumper	Setting	Description
Clear CMOS Jumper (CLR CMOS1) (see p.10, No. 15)	<div> <div>1_2</div>  <div>Default</div> </div> <div> <div>2_3</div>  <div>Clear CMOS</div> </div>	

**Note:** CLR CMOS1 allows you to clear the data in CMOS. To clear and reset the system parameters to default setup, please turn off the computer and unplug the power cord from the power supply. After waiting for 15 seconds, use a jumper cap to short pin2 and pin3 on CLR CMOS1 for 5 seconds. However, please do not clear the CMOS right after you update the BIOS. If you need to clear the CMOS when you just finish updating the BIOS, you must boot up the system first, and then shut it down before you do the clear-CMOS action. Please be noted that the password, date, time, user default profile, 1394 GUID and MAC address will be cleared only if the CMOS battery is removed.



If you clear the CMOS, the case open may be detected. Please adjust the BIOS option “Clear Status” to clear the record of previous chassis intrusion status.

## 2.6 Onboard Headers and Connectors



Onboard headers and connectors are NOT jumpers. Do NOT place jumper caps over these headers and connectors. Placing jumper caps over the headers and connectors will cause permanent damage of the motherboard!

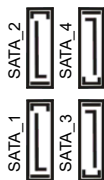
### Serial ATA2 Connectors

(SATA\_1: see p.10, No. 9)

(SATA\_2: see p.10, No. 6)

(SATA\_3: see p.10, No. 8)

(SATA\_4: see p.10, No. 7)

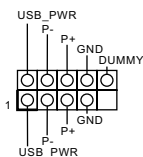


These four Serial ATA2 (SATA2) connectors support SATA data cables for internal storage devices. The current SATA2 interface allows up to 3.0 Gb/s data transfer rate.

### USB 2.0 Headers

(9-pin USB\_7\_8)

(see p.10 No. 13)



Besides six default USB 2.0 ports on the I/O panel, there are two USB 2.0 headers on this motherboard. Each USB 2.0 header can support two USB 2.0 ports.

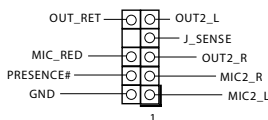
(9-pin USB\_9\_10)

(see p.10 No. 12)

### Front Panel Audio Header

(9-pin HD\_AUDIO1)

(see p.10 No. 19)



This is an interface for the front panel audio cable that allows convenient connection and control of audio devices.



1. High Definition Audio supports Jack Sensing, but the panel wire on the chassis must support HDA to function correctly. Please follow the instruction in our manual and chassis manual to install your system.
2. If you use AC'97 audio panel, please install it to the front panel audio header as below:
  - A. Connect Mic\_IN (MIC) to MIC2\_L.
  - B. Connect Audio\_R (RIN) to OUT2\_R and Audio\_L (LIN) to OUT2\_L.
  - C. Connect Ground (GND) to Ground (GND).
  - D. MIC\_RET and OUT\_RET are for HD audio panel only. You don't need to connect them for AC'97 audio panel.

E. To activate the front mic.

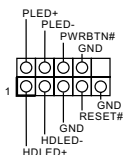
For Windows® 8.1 / 8.1 64-bit / 8 / 8 64-bit / 7 / 7 64-bit 64-bit OS:

Go to the "FrontMic" Tab in the Realtek Control panel. Adjust "Recording Volume".

## System Panel Header

(9-pin PANEL1)

(see p.10 No. 11)



This header accommodates several system front panel functions.



Connect the power switch, reset switch and system status indicator on the chassis to this header according to the pin assignments below.

Note the positive and negative pins before connecting the cables.

### **PWRBTN (Power Switch):**

Connect to the power switch on the chassis front panel. You may configure the way to turn off your system using the power switch.

### **RESET (Reset Switch):**

Connect to the reset switch on the chassis front panel. Press the reset switch to restart the computer if the computer freezes and fails to perform a normal restart.

### **PLED (System Power LED):**

Connect to the power status indicator on the chassis front panel. The LED is on when the system is operating. The LED keeps blinking when the system is in S3 sleep state. The LED is off when the system is in S4 sleep state or powered off (S5).

### **HDLED (Hard Drive Activity LED):**

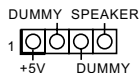
Connect to the hard drive activity LED on the chassis front panel. The LED is on when the hard drive is reading or writing data.

The front panel design may differ by chassis. A front panel module mainly consists of power switch, reset switch, power LED, hard drive activity LED, speaker and etc. When connecting your chassis front panel module to this header, make sure the wire assignments and the pin assignments are matched correctly.

## Chassis Speaker Header

(4-pin SPEAKER 1)

(see p.10 No. 10)

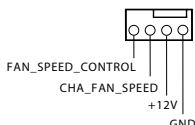


Please connect the chassis speaker to this header.

## Chassis and Power Fan Connectors

(4-pin CHA\_FAN1)

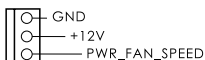
(see p.10 No. 14)



Please connect the fan cable to the fan connector and match the black wire to the ground pin.

(3-pin PWR\_FAN1)

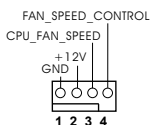
(see p.10 No. 20)



## CPU Fan Connector

(4-pin CPU\_FAN1)

(see p.10 No. 2)

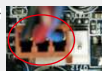


Please connect the CPU fan cable to the connector and match the black wire to the ground pin.



Though this motherboard provides 4-Pin CPU fan (Quiet Fan) support, the 3-Pin CPU fan still can work successfully even without the fan speed control function. If you plan to connect the 3-Pin CPU fan to the CPU fan connector on this motherboard, please connect it to Pin 1-3.

**Pin 1-3 Connected**

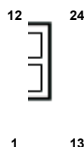


3-Pin Fan Installation

## ATX Power Connector

(24-pin ATXPWR1)

(see p.10 No. 5)



Please connect an ATX power supply to this connector.



Though this motherboard provides 24-pin ATX power connector, it can still work if you adopt a traditional 20-pin ATX power supply. To use the 20-pin ATX power supply, please plug your power supply along with Pin 1 and Pin 13.

20-Pin ATX Power Supply Installation





## 2.7 AMD Dual Graphics Operation Guide

This motherboard supports AMD Dual Graphics feature.

Graphics brings multi-GPU performance capabilities by enabling an AMD A58 (Bolton-D2) integrated graphics processor and a discrete graphics processor to operate simultaneously with combined output to a single display for blisteringly-fast frame rates. Currently, AMD Dual Graphics Technology is only supported with Windows® 8.1 / 8 / 7 OS.



### What does an AMD Dual Graphics system include?

An AMD Dual Graphics system includes an AMD Radeon™ R7/R5 Series graphics processor and a motherboard based on an AMD A58 (Bolton-D2) integrated chipset, all operating in a Windows® 8.1 / 8 / 7 environment. Please refer to AMD website for further information: <http://www.amd.com/us/products/technologies/dual-graphics/Pages/dual-graphics.aspx#3>

## Enjoy the benefit of AMD Dual Graphics

- Step 1. Please keep the default UEFI setting of “Dual Graphics” option on [Auto].
- Step 2. Install one AMD RADEON PCI Express graphics card to PCIE1 slot.
- Step 3. Connect the monitor cable to the onboard VGA port. Please be noted that the current VGA driver / VBIOS can allow Dual Graphics output from on-board display only. For any future update, please refer to our website for further information.
- Step 4. Boot into OS. Please remove the AMD driver if you have any VGA driver installed in your system.
- Step 5. Install the onboard VGA driver from our support CD to your system for both the onboard VGA and the discrete graphics card.
- Step 6. Restart your computer. Right-click the desktop. Click “AMD VISION Engine Control Center” to enter AMD VISION Engine Control Center.



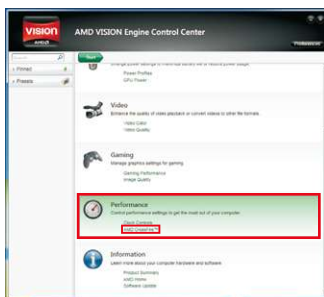


Step 7. You can also click “AMD VISION Engine Control Center” on your Windows® taskbar to enter AMD VISION Engine Control Center.

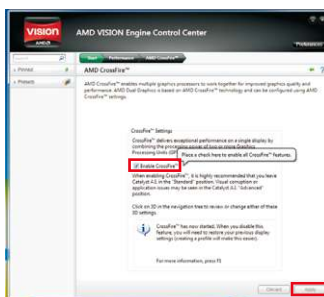


**AMD VISION Engine Control Center**

Step 8. In AMD VISION Engine Control Center, please choose “Performance”. Click “AMD CrossFire™”.



Step 9. Click “Enable CrossFire™” and click “Apply” to save your change.



Step 10. Reboot your system. Then you can freely enjoy the benefit of Dual Graphics feature.

- \* Dual Graphics appearing here is a registered trademark of AMD Technologies Inc., and is used only for identification or explanation and to the owners' benefit, without intent to infringe.
- \* For further information of AMD Dual Graphics technology, please check AMD website for up dates and details.

## **3. *Software and Utilities Operation***

### **3.1 Installing Drivers**

The Support CD that comes with the motherboard contains necessary drivers and useful utilities that enhance the motherboard's features.

#### **Running The Support CD**

To begin using the support CD, insert the CD into your CD-ROM drive. The CD automatically displays the Main Menu if "AUTORUN" is enabled in your computer. If the Main Menu does not appear automatically, locate and double click on the file "ASRSETUP.EXE" in the Support CD to display the menu.

#### **Drivers Menu**

The drivers compatible to your system will be auto-detected and listed on the support CD driver page. Please click Install All or follow the order from top to bottom to install those required drivers. Therefore, the drivers you install can work properly.

#### **Utilities Menu**

The Utilities Menu shows the application software that the motherboard supports. Click on a specific item then follow the installation wizard to install it.

## 3.2 A-Tuning

A-Tuning is ASRock's multi purpose software suite with a new interface, more new features and improved utilities, including XFast RAM, Dehumidifier, Good Night LED, FAN-Tastic Tuning, OC Tweaker and a whole lot more.

### 3.2.1 Installing A-Tuning

When you install the all-in-one driver to your system from ASRock's support CD, A-Tuning will be auto-installed as well. After the installation, you will find the icon "A-Tuning" on your desktop. Double-click the "A-Tuning" icon, A-Tuning main menu will pop up.

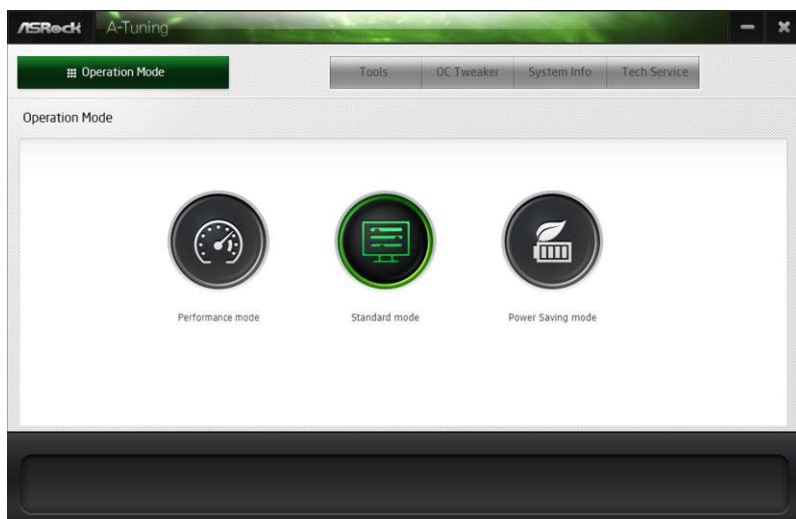


### 3.2.2 Using A-Tuning

There are five sections in A-Tuning main menu: Operation Mode, Tools, OC Tweaker, System Info and Tech Service.

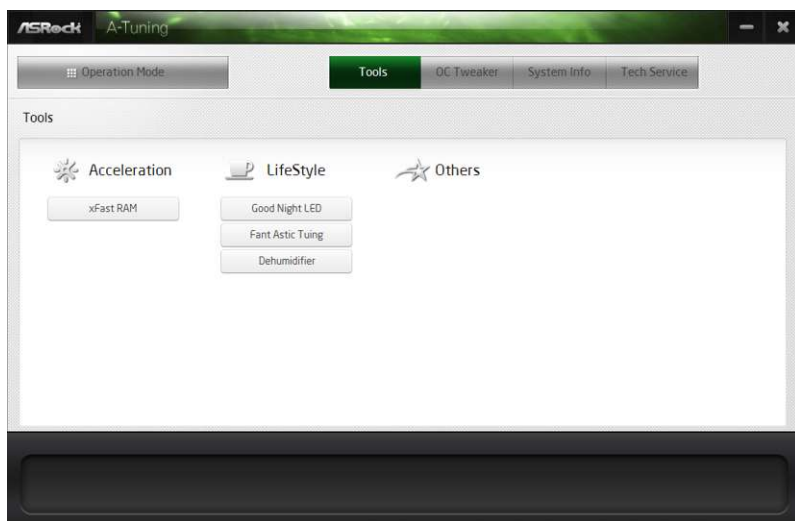
#### Operation Mode

Choose an operation mode for your computer.



## Tools

Various tools and utilities.



### XFast RAM

Boost the system's performance and extend the HDD's or SDD's lifespan! Create a hidden partition, then assign which files should be stored in the RAM drive.

### Fast Boot

Fast Boot minimizes your computer's boot time. Please note that Ultra Fast mode is only supported by Windows 8 and the VBIOS must support UEFI GOP if you are using an external graphics card.

### OMG

Schedule the starting and ending hours of Internet access granted to other users. Place X marks on the time table to disable the Internet.

### Good Night LED

Switch off the Power/HDD/LAN LEDs when the system is on, and automatically switch off the Power and Keyboard LEDs when the system enters into Standby/Hibernation mode.

## FAN-Tastic Tuning

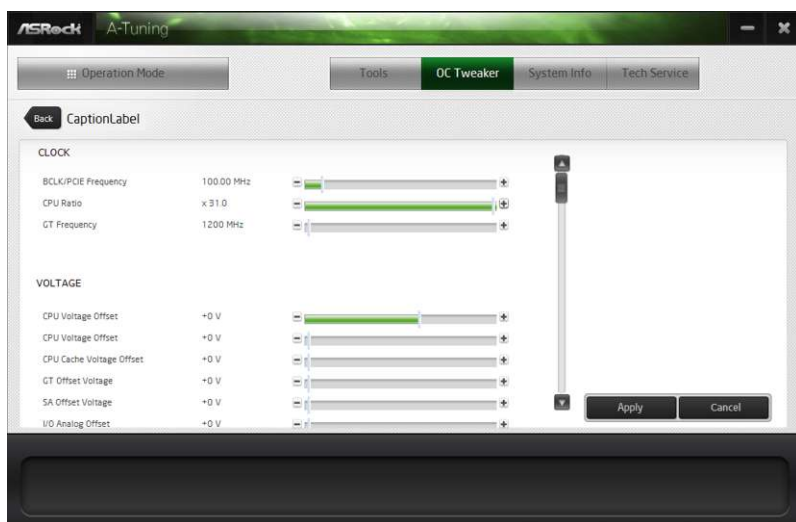
Configure up to five different fan speeds using the graph. The fans will automatically shift to the next speed level when the assigned temperature is met.

## Dehumidifier

Prevent motherboard damages due to dampness. Enable this function and configure the period of time until the computer powers on, and the duration of the dehumidifying process.

## OC Tweaker

Configurations for overclocking the system.



## System Info

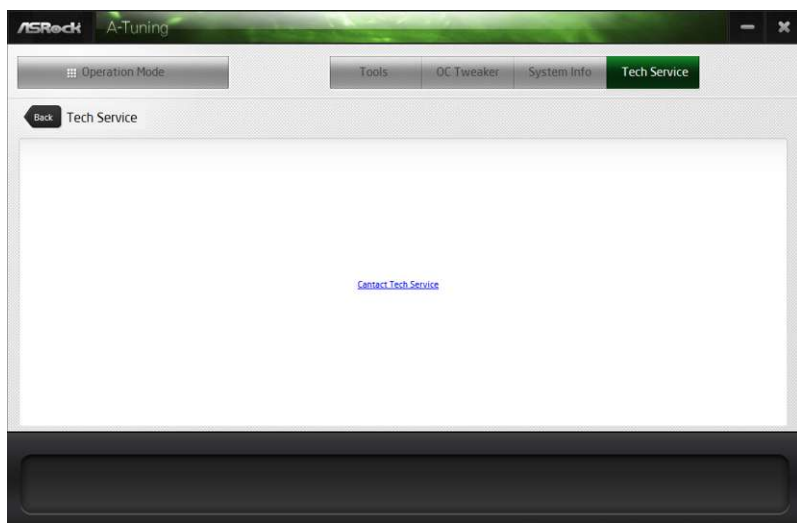
View information about the system.

## System Browser

System Browser shows the overview of your current PC and the devices connected.

## Tech Service

Contact Tech Service.



### 3.3 Start8

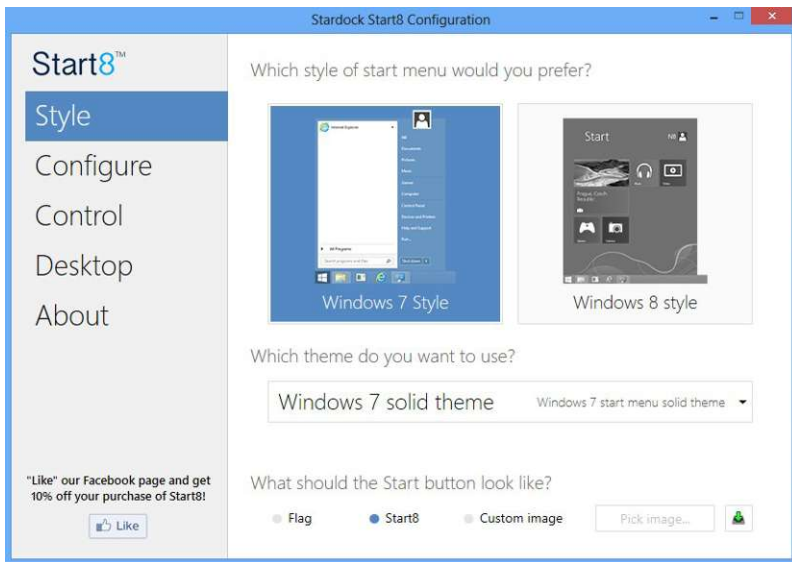
For those Windows 8 users who miss the Start Menu, Start8 is an ideal solution that brings back the familiar Start Menu along with added customizations for greater efficiency.

#### 3.3.1 Installing Start8

Install Start8, which is located in the folder at the following path of the Support CD: \ASRock Utility > Start8.

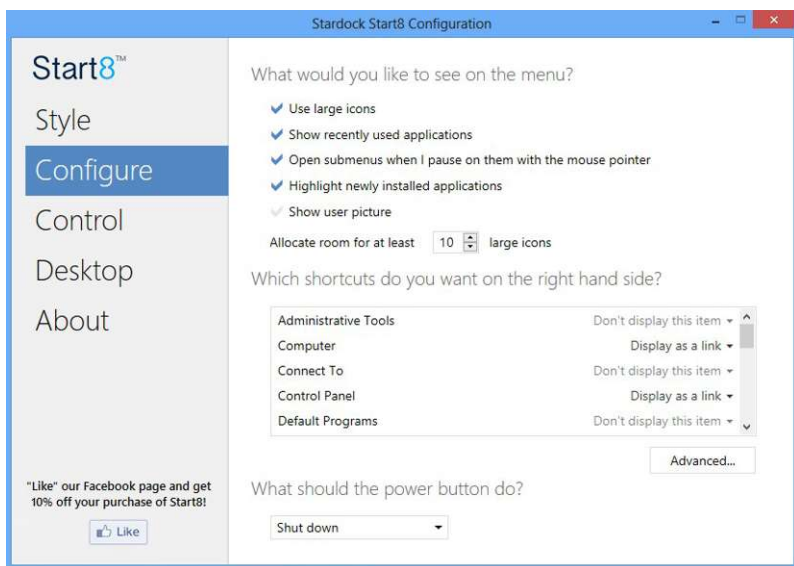
#### 3.3.2 Configuring Start8

##### Style



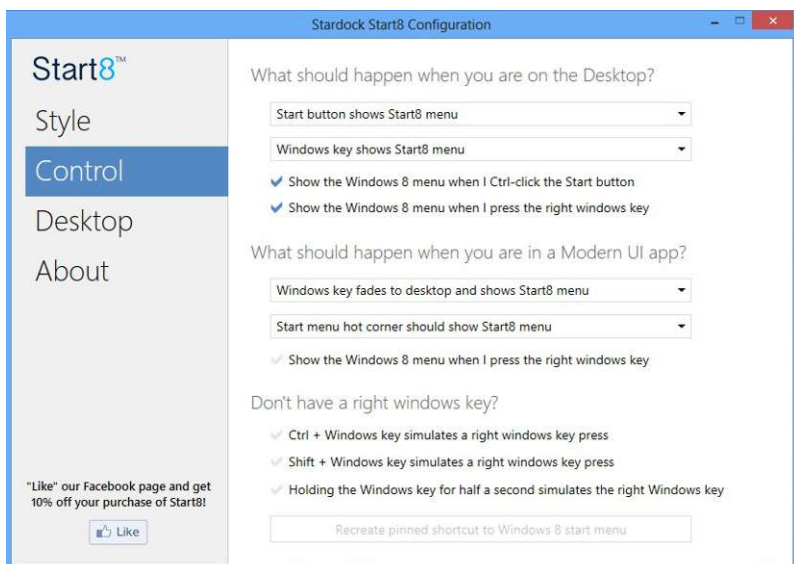
Select between the Windows 7 style and Windows 8 style Start Menu. Then select the theme of the Start Menu and customize the style of the Start icon.

## Configure



Configure provides configuration options, including icon sizes, which shortcuts you want Start Menu to display, quick access to recently used apps, the functionality of the power button, and more.

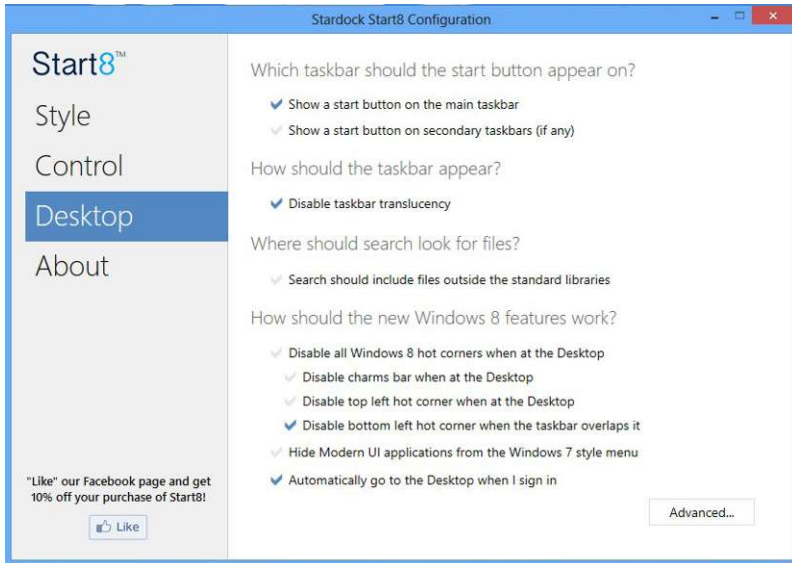
## Control





Control lets you configure what a click on the start button or a press on the Windows key does.

## Desktop



Desktop allows you to disable the hot corners when you are working on the desktop. It also lets you choose whether or not the system boots directly into desktop mode and bypass the Metro user interface.

## About

Displays information about Start8.

## 4. UEFI SETUP UTILITY

### 4.1 Introduction

ASRock Interactive UEFI is a blend of system configuration tools, cool sound effects and stunning visuals. Not only will it make BIOS setup less difficult but also a lot more amusing. This section explains how to use the UEFI SETUP UTILITY to configure your system. The UEFI chip on the motherboard stores the UEFI SETUP UTILITY. You may run the UEFI SETUP UTILITY when you start up the computer. Please press <F2> or <Delete> during the Power-On-Self-Test (POST) to enter the UEFI SETUP UTILITY, otherwise, POST will continue with its test routines.

If you wish to enter the UEFI SETUP UTILITY after POST, restart the system by pressing <Ctl> + <Alt> + <Delete>, or by pressing the reset button on the system chassis. You may also restart by turning the system off and then back on.



Because the UEFI software is constantly being updated, the following UEFI setup screens and descriptions are for reference purpose only, and they may not exactly match what you see on your screen.

#### 4.1.1 UEFI Menu Bar

The top of the screen has a menu bar with the following selections:

<b>Main</b>	For setting system time/date information
<b>OC Tweaker</b>	For overclocking configurations
<b>Advanced</b>	For advanced system configurations
<b>Tool</b>	Useful tools
<b>H/W Monitor</b>	Displays current hardware status
<b>Boot</b>	For configuring boot settings and boot priority
<b>Security</b>	For security settings
<b>Exit</b>	Exit the current screen or the UEFI SETUP UTILITY

Use <←> key or <→> key to choose among the selections on the menu bar, and use <↑> key or <↓> key to move the cursor up or down to select items, then press <Enter> to get into the sub screen. You can also navigate with a mouse.

## 4.1.2 Navigation Keys

Please check the following table for the function description of each navigation key.

Navigation Key(s)	Function Description
← / →	Moves cursor left or right to select Screens
↑ / ↓	Moves cursor up or down to select items
+ / -	To change option for the selected items
<Tab>	Switch to next function
<Enter>	To bring up the selected screen
<PGUP>	Go to the previous page
<PGDN>	Go to the next page
<HOME>	Go to the top of the screen
<END>	Go to the bottom of the screen
<F1>	To display the General Help Screen
<F7>	Discard changes and exit the UEFI SETUP UTILITY
<F9>	Load optimal default values for all the settings
<F10>	Save changes and exit the UEFI SETUP UTILITY
<F12>	Print screen
<ESC>	Jump to the Exit Screen or exit the current screen

## 4.2 Main Screen

When you enter the UEFI SETUP UTILITY, the Main screen will appear and display the system overview.



### Active Page on Entry

This allows you to select the default page when entering UEFI setup utility.

## 4.3 OC Tweaker Screen

In the OC Tweaker screen, you can set up overclocking features.



### CPU Configuration

#### Overclock Mode

Use this to select Overclock Mode. Configuration options: [Auto] and [Manual]. The default value is [Auto].

#### Spread Spectrum

This item should always be [Auto] for better system stability.

#### AMD Turbo Core Technology

This item appears only when the processor you adopt supports this feature. Use this to select enable or disable AMD Turbo Core Technology. Configuration options: [Enabled] and [Disabled]. The default value is [Enabled].

#### AMD Application power Management

Application Power Management (APM) ensures that average power consumption over a thermally significant time period remains at or below the TDP for the CPU mode being used. If [Enabled] is selected, the power consumption is reduced when overclocking.

**Processor Maximum Frequency**

It will display Processor Maximum Frequency for reference.

**Processor Maximum Voltage**

It will display Processor Maximum Voltage for reference.

**Multiplier/Voltage Change**

This item is set to [Auto] by default. If it is set to [Manual], you may adjust the value of Processor Frequency and Processor Voltage. However, it is recommended to keep the default value for system stability.

**GFX Engine Clock**

Use this to adjust GFX Engine Clock. The default value is [Auto].

**DRAM Timing Configuration****DRAM Frequency**

If [Auto] is selected, the motherboard will detect the memory module(s) inserted and assigns appropriate frequency automatically.

## DRAM Timing Control



### DRAM Slot

Use this item to view SPD data.

### DRAM Timing Control

Use this item to control DRAM timing.

### Power Down Enable

Use this item to enable or disable DDR power down mode.

### Bank Interleaving

Interleaving allows memory accesses to be spread out over banks on the same node, or accross nodes, decreasing access contention.

### Channel Interleaving

It allows you to enable Channel Memory Interleaving. Configuration options: [Disabled], [Auto]. The default value is [Auto].

## Voltage Configuration

### DRAM Voltage

Use this to select DRAM Voltage. The default value is [Auto].

### SB Voltage

Use this to select SB Voltage. The default value is [Auto].

## 4.4 Advanced Screen

In this section, you may set the configurations for the following items: CPU Configuration, North Bridge Configuration, South Bridge Configuration, Storage Configuration, Super IO Configuration, USB Configuration and Trusted Computing.



Setting wrong values in this section may cause the system to malfunction.

## 4.4.1 CPU Configuration



### Core C6 Mode

Use this item to enable or disable Core C6 mode. The default value is [Enabled].

### Cool 'n' Quiet

Use this item to enable or disable AMD's Cool 'n' Quiet™ technology. The default value is [Enabled]. Configuration options: [Enabled] and [Disabled]. If you install Windows® 8.1 / 8 / 7 and want to enable this function, please set this item to [Enabled]. Please note that enabling this function may reduce CPU voltage and memory frequency, and lead to system stability or compatibility issue with some memory modules or power supplies. Please set this item to [Disable] if above issue occurs.

### SVM

When this option is set to [Enabled], a VMM (Virtual Machine Architecture) can utilize the additional hardware capabilities provided by AMD-V. The default value is [Enabled]. Configuration options: [Enabled] and [Disabled].

### CPU Thermal Throttle

Use this item to enable CPU internal thermal control mechanism to keep the CPU from overheated. The default value is [Auto].



## 4.4.2 North Bridge Configuration



### IOMMU

This allows you to enable or disable IOMMU support.

### Primary Graphics Adapter

This item will switch the PCI Bus scanning order while searching for video card. It allows you to select the type of Primary VGA in case of multiple video controllers. The default value of this feature is [PCI Express]. Configuration options: [Onboard], [PCI] and [PCI Express].

### Share Memory

This allows you to set the share memory feature. The default value is [Auto]. Configuration options: [Auto], [32MB], [64MB], [128MB], [256MB], [512MB], [1GB] and [2GB].

### Onboard HDMI HD Audio

This allows you to enable or disable the “Onboard HDMI HD Audio” feature.

### DVI Function

Use this to select DVI function when you install the DVI to HDMI adapter to DVI port. Configuration options: [as Dual Link DVI] and [as HDMI]. If you select [as Dual Link DVI], you can use Dual Link DVI monitor without audio function. If you select [as HDMI], you can use HDMI monitor with audio function. The default value is [as Dual Link DVI].

## 4.4.3 South Bridge Configuration



### Onboard HD Audio

Select [Auto], [Enabled] or [Disabled] for the onboard HD Audio feature. If you select [Auto], the onboard HD Audio will be disabled when PCI Sound Card is plugged.

### Front Panel

Select [Auto] or [Disabled] for the onboard HD Audio Front Panel.

### Onboard LAN

This allows you to enable or disable the onboard LAN feature.

### Good Night LED

Enable this option to turn off Power LED when the system is power on. The keyboard LED will also be turned off in S3 and S4 state. The default value is [Auto].

## 4.4.4 Storage Configuration



### SATA Controller

Use this item to enable or disable the “SATA Controller” feature.

### SATA Mode

Use this item to adjust SATA Mode. The default value of this option is [AHCI Mode]. Configuration options: [AHCI Mode], [RAID Mode] and [IDE Mode].

### AMD AHCI BIOS ROM

Use this item to enable or disable AMD AHCI BIOS ROM. The default value of this option is [Disabled].

### SATA IDE Combined Mode

Use this item to enable or disable SATA IDE combined mode. The default value is [Enabled].

### Hard Disk S.M.A.R.T.

Use this item to enable or disable the S.M.A.R.T. (Self-Monitoring, Analysis, and Reporting Technology) feature. Configuration options: [Disabled], [Auto], [Enabled].

## 4.4.5 Super IO Configuration



### PS2 Y-Cable

Enable the PS2 Y-Cable or set this option to Auto.

### Serial Port

Use this item to enable or disable the onboard serial port.

#### Serial Port Address

Use this item to set the address for the onboard serial port.

Configuration options: [3F8h / IRQ4] and [3E8h / IRQ4].

### Parallel Port

Enable or disable the Parallel port.

#### Device Mode

Select the device mode according to your connected device.

#### Change Settings

Select the address of the Parallel port.

## 4.4.6 ACPI Configuration



### Suspend to RAM

Use this item to select whether to auto-detect or disable the Suspend-to-RAM feature. Select [Auto] will enable this feature if the OS supports it.

### Check Ready Bit

Enable to enter the operating system after S3 only when the hard disk is ready, this is recommended for better system stability.

### Deep Sleep

Configure deep sleep mode for power saving when the computer is shut down. We recommend disabling Deep Sleep for better system compatibility and stability.

### Restore on AC/Power Loss

This allows you to set the power state after an unexpected AC/power loss. If [Power Off] is selected, the AC/power remains off when the power recovers. If [Power On] is selected, the AC/power resumes and the system starts to boot up when the power recovers.

### PS/2 Keyboard Power On

Use this item to enable or disable PS/2 keyboard to turn on the system from the power-soft-off mode.

### PCI Devices Power On

Use this item to enable or disable PCI devices to turn on the system from the power-soft-off mode.

### Ring-In Power On

Use this item to enable or disable Ring-In signals to turn on the system from the power-soft-off mode.

### RTC Alarm Power On

Use this item to enable or disable RTC (Real Time Clock) to power on the system.

### **USB Keyboard/Remote Power On**

Use this item to enable or disable USB Keyboard/Remote to power on the system.

### **USB Mouse Power On**

Use this item to enable or disable USB Mouse to power on the system.

### **ACPI HPET table**

Use this item to enable or disable ACPI HPET Table. The default value is [Enabled]. Please set this option to [Enabled] if you plan to use this motherboard to submit Windows® certification.

## 4.4.7 USB Configuration



### USB 2.0 Controller

Use this item to enable or disable the use of USB 2.0 controller.

### Legacy USB Support

Use this option to select legacy support for USB devices. There are four configuration options: [Enabled], [Auto], [Disabled] and [UEFI Setup Only]. The default value is [Enabled]. Please refer to below descriptions for the details of these four options:

[Enabled] - Enables support for legacy USB.

[Auto] - Enables legacy support if USB devices are connected.

[Disabled] - USB devices are not allowed to use under legacy OS and UEFI setup when [Disabled] is selected. If you have USB compatibility issue, it is recommended to select [Disabled] to enter OS.

[UEFI Setup Only] - USB devices are allowed to use only under UEFI setup and Windows / Linux OS.

## 4.4.8 Trusted Computing



### Security Device Support

Enable or disable BIOS support for security device.



## 4.5 Tool



### System Browser

System Browser can let you easily check your current system configuration in UEFI setup.

### OMG(Online Management Guard)

Administrators are able to establish an internet curfew or restrict internet access at specified times via OMG. You may schedule the starting and ending hours of internet access granted to other users. In order to prevent users from bypassing OMG, guest accounts without permission to modify the system time are required.

### UEFI Tech Service

Contact ASRock Tech Service if you are having trouble with your PC. Please setup network configuration before using UEFI Tech Service.

### Easy RAID Installer

Easy RAID Installer helps you to copy the RAID driver from the support CD to your USB storage device. After copying the drivers please change the SATA mode to RAID, then you can start installing the operating system in RAID mode.

### Easy Driver Installer

For users that don't have an optical disk drive to install the drivers from our support CD, Easy Driver Installer is a handy tool in the UEFI that installs the LAN driver to your system via an USB storage device, then downloads and installs the other required drivers automatically.

### UEFI Update Utility

#### Instant Flash

Instant Flash is a UEFI flash utility embedded in Flash ROM. This convenient UEFI update tool allows you to update system UEFI without entering operating systems first like MS-DOS or Windows®. Just save the new

## Internet Flash

## Network Configuration



Use this item to set up the internet connection mode. Configuration options: [DHCP (Auto IP)] and [PPPOE].

Use this item to select UEFI firmware download server for Internet Flash.  
Configuration options: [Asia], [Europe], [USA] and [China].

Users may prevent motherboard damages due to dampness by enabling “Dehumidifier Function”. When enabling Dehumidifier Function, the computer will power on automatically to dehumidify the system after entering S4/S5 state.

**Dehumidifier Period**

This allows users to configure the period of time until the computer powers on and enables “Dehumidifier” after entering S4/S5 state.

**Dehumidifier Duration**

This allows users to configure the duration of the dehumidifying process before it returns to S4/S5 state.

**Dehumidifier CPU Fan Setting**

Use this setting to configure CPU fan speed while “Dehumidifier” is enabled.

**Would you like to save current setting user defaults?**

In this option, you are allowed to load and save three user defaults according to your own requirements.

## 4.6 Hardware Health Event Monitoring Screen

In this section, it allows you to monitor the status of the hardware on your system, including the parameters of the CPU temperature, motherboard temperature, CPU fan speed, chassis fan speed, and the critical voltage.



### CPU Fan 1 Setting

This allows you to set the CPU fan 1 speed. Configuration options: [Full On] and [Automatic Mode]. The default is value [Full On].

### Chassis Fan 1 Setting

This allows you to set the chassis fan 1 speed. Configuration options: [Full On], [Manual Mode] and [Automatic Mode]. The default is value [Full On].

### Over Temperature Protection

Use this item to enable or disable Over Temperature Protection. The default value is [Enabled].

### Case Open Feature

This allows you to enable or disable case open detection feature. The default is value [Disabled].

### Clear Status

This option appears only when the case open has been detected. Use this option to keep or clear the record of previous chassis intrusion status.

## 4.7 Boot Screen

In this section, it will display the available devices on your system for you to configure the boot settings and the boot priority.



### Fast Boot

Fast Boot minimizes your computer's boot time. There are three configuration options: [Disabled], [Fast] and [Ultra Fast]. The default value is [Disabled]. Please refer to below descriptions for the details of these three options:

[Disabled] - Disable Fast Boot.

[Fast] - The only restriction is you may not boot by using an USB flash drive.

[Ultra Fast] - There are a few restrictions.

1. Only supports Windows® 8.1/8 UEFI operating system.
2. You will not be able to enter BIOS Setup (Clear CMOS or run utility in Widows® to enter BIOS Setup).
3. If you are using an external graphics card, the VBIOS must support UEFI GOP in order to boot.

### Boot From Onboard LAN

Use this item to enable or disable the Boot From Onboard LAN feature.

### Setup Prompt Timeout

This shows the number of seconds to wait for setup activation key.

### Bootup Num-Lock

If this item is set to [On], it will automatically activate the Numeric Lock function after boot-up.

### Full Screen Logo

Use this item to enable or disable OEM Logo. The default value is [Enabled].

## Option ROM Messages

[Force BIOS] - The third-party ROM messages will be forced to display during the bootsequence.

[Keep Current] - The third-party ROM messages will be displayed only if the third-party manufacturer had set the add-on device to do so.

## Boot Failure Guard

Enable or disable the feature of Boot Failure Guard.

## Boot Failure Guard Count

Enable or disable the feature of Boot Failure Guard Count.

## CSM (Compatibility Support Module)



## CSM

Enable to launch the Compatibility Support Module. Please do not disable unless you're running a WHCK test. If you are using Windows® 8.1/8 64-bit and all of your devices support UEFI, you may also disable CSM for faster boot speed.

## Launch PXE OpROM Policy

Select UEFI only to run those that support UEFI option ROM only. Select Legacy only to run those that support legacy option ROM only. Do not launch?

## Launch Storage OpROM Policy

Select UEFI only to run those that support UEFI option ROM only. Select Legacy only to run those that support legacy option ROM only. Do not launch?

## Launch Video OpROM Policy

Select UEFI only to run those that support UEFI option ROM only. Select Legacy only to run those that support legacy option ROM only. Do not launch?

## 4.8 Security Screen

In this section, you may set or change the supervisor/user password for the system. For the user password, you may also clear it.



### Secure Boot

Enable to support Windows® 8.1/8 Secure Boot.

## 4.9 Exit Screen



### Save Changes and Exit

When you select this option, it will pop-out the following message, “Save configuration changes and exit setup?” Select [OK] to save the changes and exit the UEFI SETUP UTILITY.

### Discard Changes and Exit

When you select this option, it will pop-out the following message, “Discard changes and exit setup?” Select [OK] to exit the UEFI SETUP UTILITY without saving any changes.

### Discard Changes

When you select this option, it will pop-out the following message, “Discard changes?” Select [OK] to discard all changes.

### Load UEFI Defaults

Load UEFI default values for all the setup questions. F9 key can be used for this operation.



## Contact Information

If you need to contact ASRock or want to know more about ASRock, you're welcome to visit ASRock's website at <http://www.asrock.com>; or you may contact your dealer for further information. For technical questions, please submit a support request form at <http://www.asrock.com/support/tsd.asp>

### **ASRock Incorporation**

2F., No.37, Sec. 2, Jhongyang S. Rd., Beitou District,

Taipei City 112, Taiwan (R.O.C.)

### **ASRock EUROPE B.V.**

Bijsterhuizen 3151

6604 LV Wijchen

The Netherlands

Phone: +31-24-345-44-33

Fax: +31-24-345-44-38

### **ASRock America, Inc.**

13848 Magnolia Ave, Chino, CA91710

U.S.A.

Phone: +1-909-590-8308

Fax: +1-909-590-1026