



NUC-N97/D5

## User Manual

Version 1.1

Updated December 3, 2025

Copyright©2025 ASRockInd INC. All rights reserved.

Version 1.0

Published November 21, 2025

Copyright©2025 ASRockInd INC. All rights reserved.

## Copyright Notice:

No part of this documentation may be reproduced, transcribed, transmitted, or translated in any language, in any form or by any means, except duplication of documentation by the purchaser for backup purpose, without written consent of ASRockInd Inc.

Products and corporate names appearing in this documentation may or may not be registered trademarks or copyrights of their respective companies, and are used only for identification or explanation and to the owners' benefit, without intent to infringe.

## Disclaimer:

Specifications and information contained in this documentation are furnished for informational use only and subject to change without notice, and should not be constructed as a commitment by ASRockInd. ASRockInd assumes no responsibility for any errors or omissions that may appear in this documentation.

To the extent permitted by law, with respect to the contents of this documentation, ASRockInd does not provide warranty of any kind, either expressed or implied, including but not limited to the implied warranties or conditions of merchantability or fitness for a particular purpose. In no event shall ASRockInd, its directors, officers, employees, or agents be liable for any indirect, special, incidental, or consequential damages (including damages for loss of profits, loss of business, loss of data, interruption of business and the like), even if ASRockInd has been advised of the possibility of such damages arising from any defect or error in the documentation or product.



This device complies with Part 15 of the FCC Rules. Operation is subject to the following two conditions:

- (1) this device may not cause harmful interference, and
- (2) this device must accept any interference received, including interference that may cause undesired operation.

The terms HDMI® and HDMI High-Definition Multimedia Interface, and the HDMI logo are trademarks or registered trademarks of HDMI Licensing LLC in the United States and other countries.





### WARNING

#### THIS PRODUCT CONTAINS A BUTTON BATTERY

If swallowed, a button battery can cause serious injury or death.

Please keep batteries out of sight or reach of children.

### CALIFORNIA, USA ONLY

The Lithium battery adopted on this motherboard contains Perchlorate, a toxic substance controlled in Perchlorate Best Management Practices (BMP) regulations passed by the California Legislature. When you discard the Lithium battery in California, USA, please follow the related regulations in advance.

“Perchlorate Material-special handling may apply, see [www.dtsc.ca.gov/hazardouswaste/perchlorate](http://www.dtsc.ca.gov/hazardouswaste/perchlorate)”

### AUSTRALIA ONLY

Our goods come with guarantees that cannot be excluded under the Australian Consumer Law. You are entitled to a replacement or refund for a major failure and compensation for any other reasonably foreseeable loss or damage caused by our goods. You are also entitled to have the goods repaired or replaced if the goods fail to be of acceptable quality and the failure does not amount to a major failure. If you require assistance please call ASRockInd Tel : +886-2-28965588 ext.123 (Standard International call charges apply)



ASRockInd follows the green design concept to design and manufacture our products, and makes sure that each stage of the product life cycle of ASRockInd product is in line with global environmental regulations. In addition, ASRockInd disclose the relevant information based on regulation requirements.



DO NOT throw the motherboard in municipal waste. This product has been designed to enable proper reuse of parts and recycling. This symbol of the crossed out wheeled bin indicates that the product (electrical and electronic equipment) should not be placed in municipal waste. Check local regulations for disposal of electronic products.

## Button Battery Safety Notice

### **WARNING**

- **INGESTION HAZARD:** This product contains a button cell or coin battery.
- **DEATH** or serious injury can occur if ingested.
- A swallowed button cell or coin battery can cause **Internal Chemical Burns** in as little as **2 hours**.
- **KEEP** new and used batteries **OUT OF REACH of CHILDREN**
- **Seek immediate medical attention** if a battery is suspected to be swallowed or inserted inside any part of the body.



- Remove and immediately recycle or dispose of used batteries according to local regulations and keep away from children. Do NOT dispose of batteries in household trash or incinerate.
- Even used batteries may cause severe injury or death.
- Call a local poison control center for treatment information.
- Battery type: CR2032
- Battery voltage: 3V
- Non-rechargeable batteries are not to be recharged.
- Do not force discharge, recharge, disassemble, heat above (manufacturer's specified temperature rating) or incinerate. Doing so may result in injury due to venting, leakage or explosion resulting in chemical burns.
- This product contains an irreplaceable battery.
- This icon indicates that a swallowed button battery can cause serious injury or death. Please keep batteries out of sight or reach of children.

## Contents

<b>Chapter 1 Introduction</b>	<b>1</b>
1.1 Package Contents	1
1.2 Specifications	2
1.3 Motherboard Layout	4
1.4 I/O Panel	6
1.5 Block Diagram	7
<b>Chapter 2 Installation</b>	<b>8</b>
2.1 Screw Holes	8
2.2 Pre-installation Precautions	8
2.3 Installation of Memory Modules	9
2.4 Expansion Slots	10
2.5 Jumpers Setup	11
2.6 Onboard Headers and Connectors	12
2.7 Installation of ROM Socket	15
<b>Chapter 3 UEFI SETUP UTILITY</b>	<b>16</b>
3.1 Introduction	16
3.1.1 Entering BIOS Setup	16
3.1.2 UEFI Menu Bar	17
3.1.3 Navigation Keys	18
3.2 Main Screen	19
3.3 Advanced Screen	20
3.3.1 CPU Configuration	21

3.3.2	Chipset Configuration	24
3.3.3	Storage Configuration	26
3.3.4	Super IO Configuration	28
3.3.5	ACPI Configuration	29
3.3.6	USB Configuration	30
3.3.7	Power Configuration	31
3.3.8	Trusted Computing	32
3.4	Hardware Health Event Monitoring Screen	35
3.5	Security Screen	36
3.6	Boot Screen	37
3.7	Exit Screen	38

# Chapter 1 Introduction

Thank you for purchasing ASRockInd **NUC-N97/D5** motherboard, a reliable motherboard produced under ASRockInd's consistently stringent quality control. It delivers excellent performance with robust design conforming to ASRockInd's commitment to quality and endurance.

In this manual, chapter 1 and 2 contain introduction of the motherboard and step-by-step guide to the hardware installation. Chapter 3 contains the configuration guide to BIOS setup.



*Because the motherboard specifications and the BIOS software might be updated, the content of this manual will be subject to change without notice. In case any modifications of this manual occur, the updated version will be available on ASRockInd website without further notice. You may find the latest CPU support lists on ASRockInd website as well.*

*ASRockInd website: <https://www.asrockind.com/NUC-N97/D5>*

*If you require technical support related to this motherboard, please visit our website for specific information about the model you are using.*

*<https://www.asrockind.com/technical-support>*

## 1.1 Package Contents

ASRockInd **NUC-N97/D5** Motherboard (NUC (4.09-in x 4.02-in x 1.4-in, 10.4 cm x 10.2 cm x 3.6 cm))

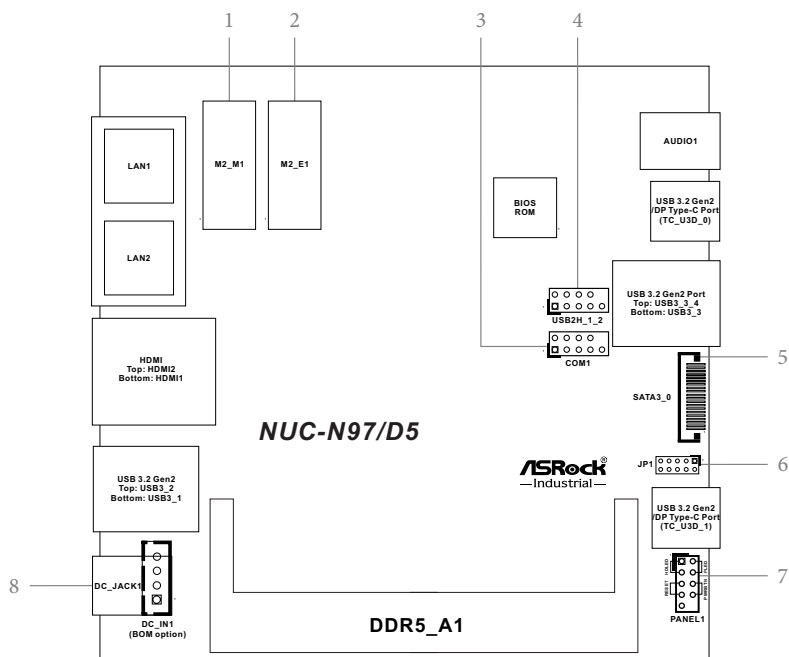
## 1.2 Specifications

<b>Form Factor</b>	Dimensions	NUC (4.09-in x 4.02-in x 1.4-in, 10.4 cm x 10.2 cm x 3.6 cm)
<b>Processor System</b>	CPU	Intel® Alder Lake-N Processors N97
	Chipset	MCP
	BIOS	AMI SPI 256 Mbit
<b>Memory</b>	Technology	Single Channel DDR5 4800 MHz
	Capacity	32GB
	Socket	1 x 262-pin SO-DIMM
<b>Graphics</b>	Controller	Intel® UHD Graphics
	HDMI	HDMI 2.0b Max resolution up to 4096x2160@60Hz
	DisplayPort	DisplayPort 1.4a, DP++ Max resolution up to 4096x2160@60Hz
	Multi Display	Triple-Display (Included 2 outputs from Type-C)
<b>Expansion Slot</b>	M.2	1 x M.2 (Key E, 2230) with PCIe Gen3 x1, USB 2.0 and CNVio/CNVio2 for Wireless
<b>Audio</b>	Interface	Realtek ALC256, High Definition Audio
<b>Ethernet</b>	Controller/Speed	LAN1: Realtek RTL8125BG with 10/100/1000/2500 Mbps LAN2: Realtek RTL8125BG with 10/100/1000/2500 Mbps
	Controller	2 x RJ-45
<b>Front I/O</b>	USB	2 x USB 3.2 Gen2 (Type-A) 2 x USB 3.2 Gen2 (Type-C, 5V/3A, Supports DP1.4a display output)
	Audio	1 (headphone & microphone jack)
<b>Rear I/O</b>	HDMI	2 x HDMI 2.0b
	Ethernet	2 x 2.5 Gigabit LAN
	USB	2 x USB 3.2 Gen2 (Type-A)
	DC Jack	1
<b>Internal Connector</b>	USB	2 x USB 2.0 (1 x 2.00 pitch header)
	COM	1 x COM (RS232/422/485)
<b>Storage</b>	M.2	1 x M.2 (KEY M, 2242/2260/2280) with PCIe Gen3 x1 and SATA3 for SSD *M.2 Key M 2280 (Supported by bracket)
	SATA	1 x SATA3.0 (6.0 Gb/s)

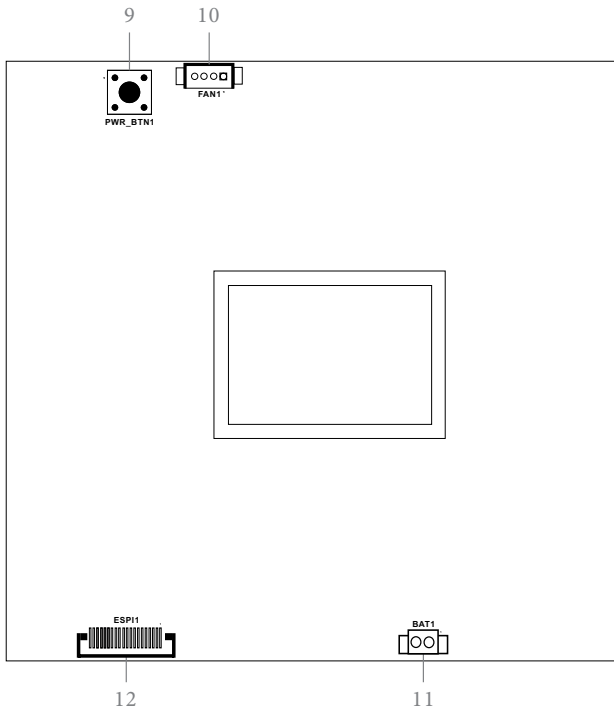


Security	TPM	TPM 2.0 onboard IC
Watchdog	Output	From Super I/O to drag RESETCON#
Timer	Interval	256 Segments, 0, 1, 2, ...255 sec
Power Requirements	Input PWR	9V~24V DC-In Jack
	Power On	AT/ATX Supported - AT: Directly PWR on as power input ready - ATX: Press button to PWR on after power input ready
Environment	Operating Temperature	-20°C ~ 70°C
	Storage Temperature	-40° C ~ 85° C
	Operating Humidity	5% ~ 90% (non-condensing)
	Storage Humidity	5% ~ 90% (non-condensing)

## 1.3 Motherboard Layout



- 1 : M.2 Key-M Socket (M2\_M1)
- 2 : M.2 Key-E Socket (M2\_E1)
- 3 : COM Port Header (COM1) (RS232/422/485)\*
- 4 : USB 2.0 Header (USB2H\_1\_2)
- 5 : SATA Port (SATA3\_0)
- 6 : JP1
- 7 : USB 3.2 Gen2/DP Type-C Port (TC\_U3D\_1)
- 8 : System Panel Header (PANEL1)



Back Side:

9 : Power Button (PWR\_BTN1)

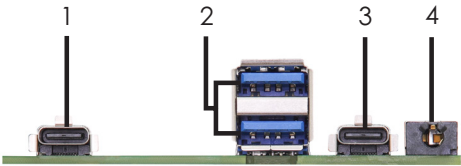
10 : Fan Connector (FAN1)

11 : Battery Connector (BAT1)

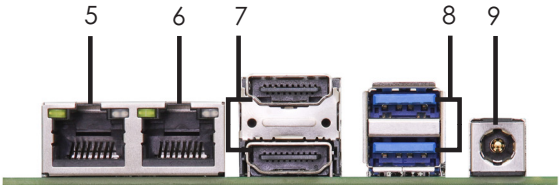
12 : ESPI Connector (ESPI)

# 1.4 I/O Panel

Front I/O :



Rear I/O :



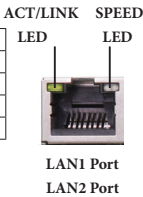
- |   |  |   |  |
|---|--|---|--|
| 1 | USB 3.2 Gen2/DP Type-C Port (TC_U3D_1)                           | 5 | RJ-45 LAN Port (LAN1)*   |
| 2 | USB 3.2 Gen2 Ports (USB3_3_4)<br>Top: USB3_3_4<br>Bottom: USB3_3 | 6 | RJ-45 LAN Port (LAN2)*   |
| 3 | USB 3.2 Gen2/DP Type-C Port (TC_U3D_0)                           | 7 | HDMI Ports (HDMI1_2)<br>Top: HDMI2<br>Bottom: HDMI1            |
| 4 | Audio Jack (AUDIO1) (Mic-in + Line-out)                          | 8 | USB 3.2 Gen2 Ports (USB3_1_2)<br>Top: USB3_2<br>Bottom: USB3_1 |
|   |  | 9 | DC-In Jack (DC_JACK1)  |

\* There are two LEDs on the LAN1, 2 ports. Please refer to the table below for the LAN1, 2 ports LED indications.

LAN1, 2 Ports LED Indications

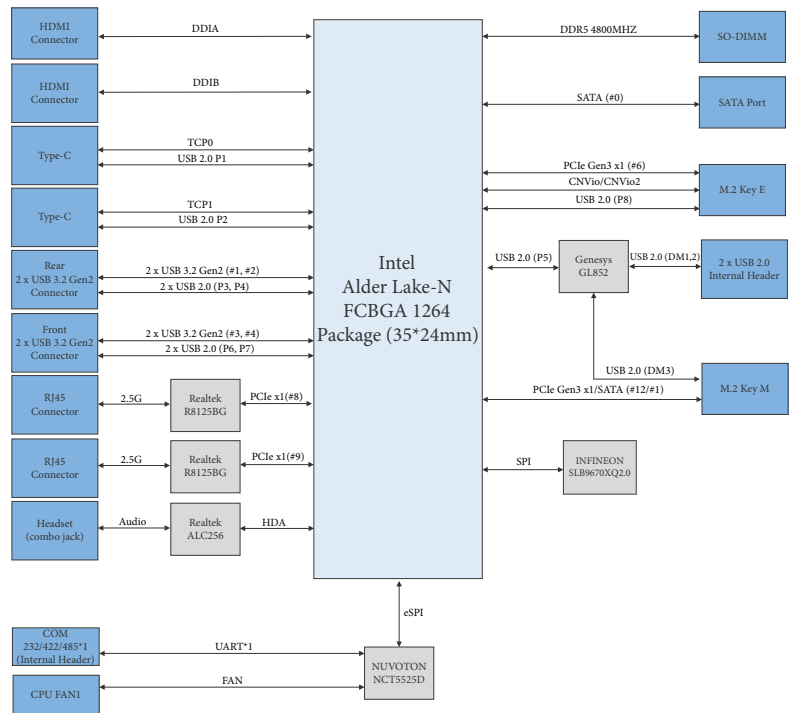
Activity/Link LED	
Status	Description
Off	No Link
Blinking	Data Activity
On	Link

SPEED LED	
Status	Description
Off	10Mbps connection
Orange	100Mbps/1Gbps connection
Green	2.5Gbps connection



# 1.5 Block Diagram

## NUC-N97/D5



## Chapter 2 Installation

This is a NUC (4.09-in x 4.02-in x 1.4-in, 10.4 cm x 10.2 cm x 3.6 cm) form factor motherboard. Before you install the motherboard, study the configuration of your chassis to ensure that the motherboard fits into it.



*Make sure to unplug the power cord before installing or removing the motherboard. Failure to do so may cause physical injuries to you and damages to motherboard components.*

### 2.1 Screw Holes

Place screws into the holes to secure the motherboard to the chassis.



*Do not over-tighten the screws! Doing so may damage the motherboard.*

### 2.2 Pre-installation Precautions

Take note of the following precautions before you install motherboard components or change any motherboard settings.

1. Unplug the power cord from the wall socket before touching any component.
2. To avoid damaging the motherboard components due to static electricity, NEVER place your motherboard directly on the carpet or the like. Also remember to use a grounded wrist strap or touch a safety grounded object before you handle components.
3. Hold components by the edges and do not touch the ICs.
4. Whenever you uninstall any component, place it on a grounded antistatic pad or in the bag that comes with the component.
5. Heatsink (The thermal solution of whole system needs to be designed additionally.)

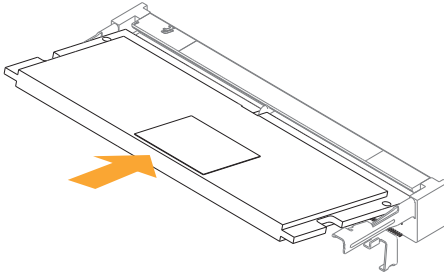


*Before you install or remove any component, ensure that the power is switched off or the power cord is detached from the power supply. Failure to do so may cause severe damage to the motherboard, peripherals, and/or components.*

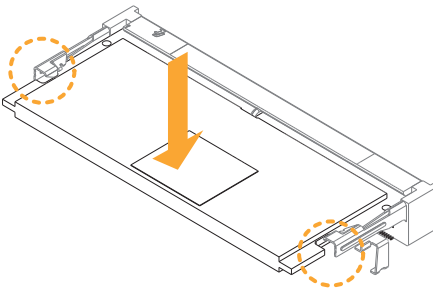
## 2.3 Installation of Memory Modules

NUC-N97/D5 provides one 262-pin DDR5 (Double Data Rate 5) SO-DIMM slot, and supports Single Channel Memory Technology.

Step 1. Carefully insert the SO-DIMM memory module into the slot at a 30-degree angle.



Step 2. Firmly insert the SO-DIMM into the slot until the retaining clip at both ends fully snaps back in place and the SO-DIMM is properly seated.



*The SO-DIMM only fits in one correct orientation. It will cause permanent damage to the motherboard and the SO-DIMM if you force the SO-DIMM into the slot at incorrect orientation.*

## 2.4 Expansion Slots

There are two M.2 sockets on this motherboard.

**M.2 for SSD:** 1 x M.2 (KEY M, 2242/2260/2280) with PCIe Gen3 x1 and SATA3 for SSD

\*M.2 Key M 2280 (Supported by bracket)

**M.2 for Wi-Fi:** 1 x M.2 (Key E, 2230) with PCIe Gen3 x1, USB 2.0 and CNVio/ CNVio2 for Wireless

M.2 Key-M Socket  
(M2\_M1)

Pin	Signal	Signal	Pin
1	GND	+3.3V	2
3	GND	+3.3V	4
5	NA	NA	6
7	NA	NA	8
9	GND	SATA_LED	10
11	NA	+3.3V	12
13	NA	+3.3V	14
15	GND	+3.3V	16
17	NA	+3.3V	18
19	NA	NA	20
21	GND	NA	22
23	NA	NA	24
25	NA	NA	26
27	GND	NA	28
29	NA	NA	30
31	NA	NA	32
33	GND	NA	34
35	NA	NA	36
37	NA	NA	38
39	GND	SMB_CLK	40
41	PERn0/SATA-B+	SMB_DATA	42
43	PERp0/SATA-B-	NA	44
45	GND	NA	46
47	PETn0/SATA-A-	NA	48
49	PETP0/SATA-A+	PERST#	50
51	GND	CLKREQ#	52
53	PEFCLKn	NA	54
55	PEFCLKp	NA	56
57	GND	NA	58
67	NA	NA	68
69	PEDET	+3.3V	70
71	GND	+3.3V	72
73	GND	+3.3V	74
75	GND		

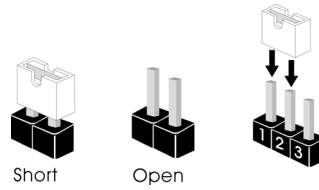
M.2 Key-E Socket  
(M2\_E1)

Pin	Signal	Signal	Pin
1	GND	+3.3V	2
3	USB_D+	+3.3V	4
5	USB_D-	NA	6
7	GND	NA	8
9	CNV_WGR_D1-	CNV_RF_RESET	10
11	CNV_WGR_D1+	NA	12
13	GND	MODEM_CLKREQ	14
15	CNV_WGR_D0-	NA	16
17	CNV_WGR_D0+	GND	18
19	GND	NA	20
21	CNV_WGR_CLK-	CNV_BRI_RSP	22
23	CNV_WGR_CLK+		
		CNV_BGI_DT	32
33	GND	CNV_RGI_RSP	34
35	PETp	CNV_BRI_DT	36
37	PETn	NA	38
39	GND	NA	40
41	PERp	NA	42
43	PERn	NA	44
45	GND	NA	46
47	PEFCLKp	NA	48
49	PEFCLKn	SUSCLK	50
51	GND	PERST0#	52
53	CLKREQ#	W_DISABLE1#	54
55	NA	W_DISABLE2#	56
57	GND	SMB_DATA	58
59	CNV_WT_D1-	SMB_CLK	60
61	CNV_WT_D1+	NA	62
63	GND	NA	64
65	CNV_WT_D0-	NA	66
67	CNV_WT_D0+	NA	68
69	GND	NA	70
71	CNV_WT_CLK-	+3.3V	72
73	CNV_WT_CLK+	+3.3V	74
75	GND		



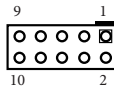
## 2.5 Jumpers Setup

The illustration shows how jumpers are setup. When the jumper cap is placed on pins, the jumper is “Short.” If no jumper cap is placed on pins, the jumper is “Open.” The illustration shows a 3-pin jumper whose pin1 and pin2 are “Short” when jumper cap is placed on these 2 pins.



### JP1

(10-pin SATA3\_0)  
(see p. 4, No. 6)



Pin	Signal Name
1-2	SIO AT Mode (Default Open: SIO ATX Mode)
3-4	Auto Clear CMOS
4-6	Clear CMOS
5-7	DACC*
9	Case open
10	GND

\*Auto clear CMOS when system boot improperly.

## 2.6 Onboard Headers and Connectors

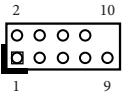


Onboard headers and connectors are NOT jumpers. Do NOT place jumper caps over these headers and connectors. Placing jumper caps over the headers and connectors will cause permanent damage to the motherboard!

### COM Port Header (RS-232/422/485)

(9-pin COM1)

(see p. 4, No. 3)



Pin	Signal Name	Signal Name	Pin
1	DDCD#1	RRXD1	2
3	TTXD1	DDTR#1	4
5	GND	DDSR#1	6
7	RRTS#1	CCTS#1	8
9	DUMMY		10



This motherboard supports RS232/422/485 on COM1 port. Please refer to the table below for the pin definition. In addition, COM1 port (RS232/422/485) can be adjusted in BIOS setup utility > Advanced Screen > Super IO Configuration. You may refer to our manual for details.

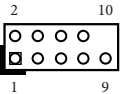
COM1 Port Pin Definition

Pin	RS232	RS422	RS485
1	DCD	TX-	RTX-
2	RXD	TX+	RTX+
3	TXD	RX+	NA
4	DTR	RX-	NA
5	GND	GND	GND
6	DSR	NA	NA
7	RTS	NA	NA
8	CTS	NA	NA
9	NA	NA	NA

### USB 2.0 Header

(9-pin USB2H\_1\_2)

(see p. 4, No. 4)



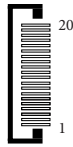
Pin	Signal Name	Signal Name	Pin
1	USB_PWR	USB_PWR	2
3	USB_D-	USB_D-	4
5	USB_D-	USB_D+	6
7	GND	GND	8
9	DUMMY		10

The board provides one internal USB 2.0 header, which can support two USB 2.0 ports. The maximum current per port is 0.5A.

## SATA Port

(20-pin SATA3\_0)

(see p. 4, No. 5)



Pin	Signal Name
1	GND
2	SATA-A+
3	SATA-A-
4	GND
5	GND
6	SATA-B-
7	SATA-B+
8	GND
9	GND
10	GND
11	NC
12	+5V
13	+5V
14	+5V
15	+5V
16	+5V
17	NC
18	GND
19	GND
20	GND

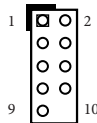
The Serial ATA3 (SATA3) connector supports SATA data cables for internal storage devices.

The current SATA3 interface allows up to 6.0 Gb/s data transfer rate.

## System Panel Header

(9-pin PANEL1)

(see p. 4, No. 7)



Pin	Signal Name	Signal Name	Pin
1	HDLED+	PLED+	2
3	HDLED-	PLED-	4
5	GND	PWRBTN#	6
7	RESET#	GND	8
9	+5VSB		10

This header accommodates several system front panel functions.



Connect the power switch, reset switch and system status indicator on the chassis to this header according to the pin assignments below. Note the positive and negative pins before connecting the cables.

### PWRBTN (Power Switch):

Connect to the power switch on the chassis front panel. You may configure the way to turn off your system using the power switch.

### RESET (Reset Switch):

Connect to the reset switch on the chassis front panel. Press the reset switch to restart the computer if the computer freezes and fails to perform a normal restart.

### PLED (System Power LED):

Connect to the power status indicator on the chassis front panel. The LED is on when the system is operating. The LED keeps blinking when the system is in S3 sleep state. The LED is off when the system is in S4 sleep state or powered off (S5).

### HDLED (Hard Drive Activity LED):

Connect to the hard drive activity LED on the chassis front panel. The LED is on when the hard drive is reading or writing data.

The front panel design may differ by chassis. A front panel module mainly consists of power switch, reset switch, power LED, hard drive activity LED, speaker and etc. When connecting your chassis front panel module to this header, make sure the wire assignments and the pin assignments are matched correctly.

4-pin DC-In Wafer (BOM option)

(4-pin DC-IN1)

(see p. 4, No. 8)



Pin	Signal Name
1	GND
2	DC Input
3	DC Input
4	GND

Back Side :

Power Button

(PWR\_BTN1)

(see p. 5, No. 9)



Fan Connector

(4-pin FAN1)

(see p. 5, No. 10)



Pin	Signal Name
1	GND
2	+5V
3	FAN_SPEED
4	FAN_SPEED_CONTROL

Battery Connector

(BAT1)

(see p. 5, No. 11)



Pin	Signal Name
1	+BAT
2	GND

ESPI Header

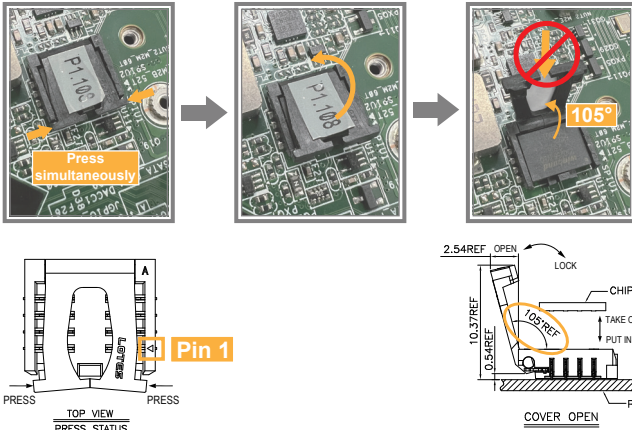
(20-pin ESP11)

(see p. 5, No. 12)



Pin	Signal Name
1	GND
2	ESPI_CLK
3	GND
4	ESPI_CS#
5	ESPI_RESET#
6	GND
7	+3V
8	GND
9	SMB_CLK
10	SMB_DATA
11	ESPI_IO0
12	ESPI_IO1
13	ESPI_IO2
14	ESPI_IO3
15	GND
16	+3VSB
17	Internal use
18	Internal use
19	ESPI_ALERT#
20	GND

## 2.7 Installation of ROM Socket



- Do not press one side of the actuator cover at a time. Always apply even and simultaneous force to both sides to avoid damage.
- Do not apply force to the actuator cover after the IC is inserted, especially when it is fully opened at 105 degrees. Pressing vertically at this angle may cause the cover to break.



- The white dot (Pin 1) on the ROM must align with the Pin 1 position of the socket (white arrow area).
  - Ensure the white dot on the ROM is facing outward from the socket.
- Warning: Incorrect installation may damage the chipset and motherboard. Refer to the picture for proper orientation.**

---

## Chapter 3 UEFI SETUP UTILITY

### 3.1 Introduction

ASRock Industrial UEFI (Unified Extensible Firmware Interface) is a BIOS utility which offers tweak-friendly options in an advanced viewing interface. The UEFI system works with a USB mouse and offers users a faster, sleeker experience.

This BIOS utility can perform the Power-On Self-Test (POST) during system startup, record hardware parameters of the system, load operating system, and so on. The battery on the motherboard supplies the power needed to the CMOS when the system power is turned off, and the values configured in the UEFI utility are kept in the CMOS.

Please note that inadequate BIOS settings may cause system instability, malfunction or boot failure. We strongly recommend that you do not alter the UEFI default configurations or change the settings only with the assistance of a trained service person.

If the system becomes unstable or fails to boot after you change the setting, try to clear the CMOS values and reset the board to default values. See your motherboard manual for instructions.

#### 3.1.1 Entering BIOS Setup

You may run the UEFI Setup Utility by pressing <F2> or <Delete> right after you power on the computer; otherwise, the Power-On-Self-Test (POST) will continue with its test routines. If you wish to enter the UEFI Setup Utility after POST, restart the system by pressing <Ctl> + <Alt> + <Delete>, or by pressing the reset button on the system chassis. You may also restart by turning the system off and then back on.

This setup guide explains how to use the UEFI Setup Utility to configure all the supported system. The screenshots in this manual are for reference only. UEFI Settings and options may vary owing to different BIOS release versions or CPU installed. Please refer to the actual BIOS version of the motherboard you purchased for detailed screens, settings and options.

### 3.1.2 UEFI Menu Bar

The top of the screen has a menu bar with the following selections:

<b>Main</b>	For setting system time/date information
<b>Advanced</b>	For advanced system configurations
<b>H/W Monitor</b>	Displays current hardware status
<b>Security</b>	For security settings
<b>Boot</b>	For configuring boot settings and boot priority
<b>Exit</b>	Exit the current screen or the UEFI Setup Utility



*Because the UEFI software is constantly being updated, the following UEFI setup screens and descriptions for reference purpose only, and may vary from the latest BIOS and do not exactly match what you see on your screen.*

### 3.1.3 Navigation Keys

Use <←> key or <→> key to choose among the selections on the menu bar, and use <↑> key or <↓> key to move the cursor up or down to select items, then press <Enter> to get into the sub screen. You can also use the mouse to click your required item.

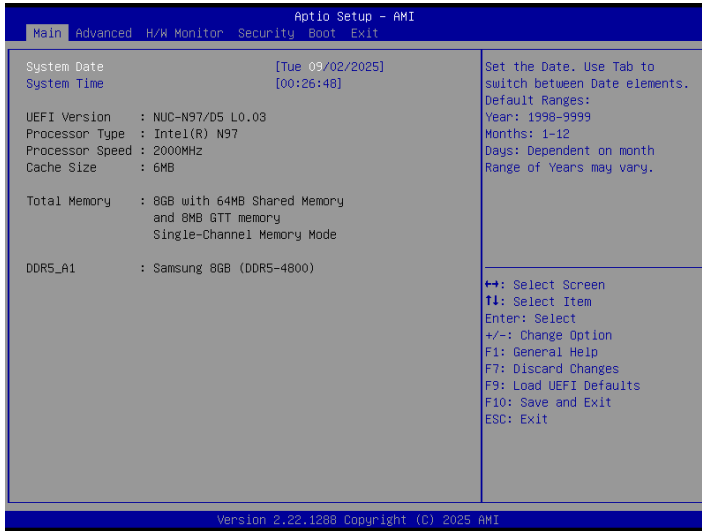
Please check the following table for the descriptions of each navigation key.

Navigation Key(s)	Description
+ / -	To change option for the selected items
<Tab>	Switch to next function
<PGUP>	Go to the previous page
<PGDN>	Go to the next page
<HOME>	Go to the top of the screen
<END>	Go to the bottom of the screen
<F1>	To display the General Help Screen
<F7>	Discard changes and exit the SETUP UTILITY
<F9>	Load optimal default values for all the settings
<F10>	Save changes and exit the SETUP UTILITY
<F12>	Print screen
<ESC>	Jump to the Exit Screen or exit the current screen



## 3.2 Main Screen

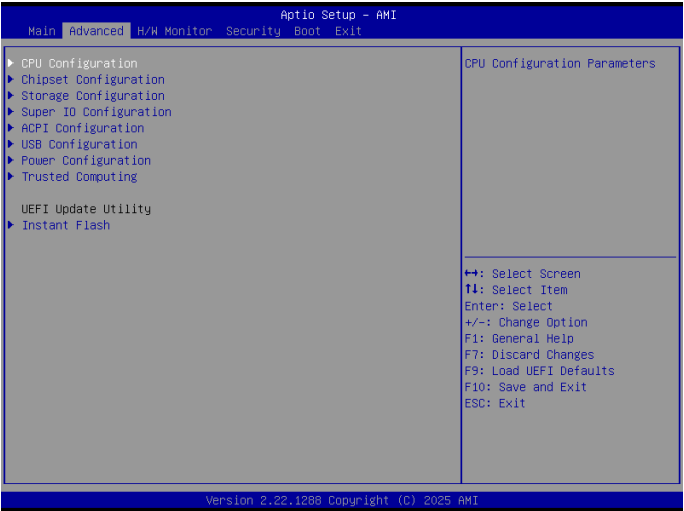
When you enter the UEFI SETUP UTILITY, the Main screen will appear and display the system overview.



*Because the UEFI software is constantly being updated, the following UEFI setup screens and descriptions are for reference purpose only, and they may not exactly match what you see on your screen. Options may also vary depending on the features of your motherboard.*

### 3.3 Advanced Screen

In this section, you may set the configurations for the following items: CPU Configuration, Chipset Configuration, Storage Configuration, Super IO Configuration, ACPI Configuration, USB Configuration, Power Configuration, and Trusted Computing.

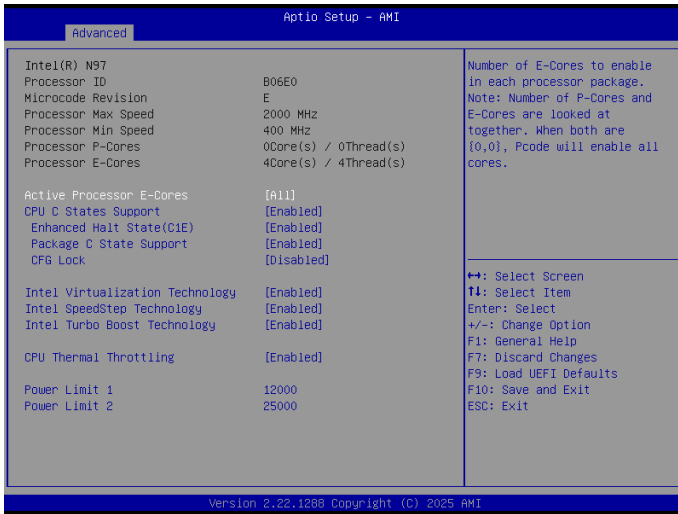


*Setting wrong values in this section may cause the system to malfunction.*

#### Instant Flash

Instant Flash is a UEFI flash utility embedded in Flash ROM. This convenient UEFI update tool allows you to update system UEFI without entering operating systems first like Windows®. Just launch this tool and save the new UEFI file to your USB flash drive, floppy disk or hard drive, and then you can update your UEFI in only a few clicks without preparing an additional floppy diskette or other complicated flash utility. Please be noted that the USB flash drive or hard drive must use FAT32/16/12 file system. If you execute Instant Flash utility, the utility will show the UEFI files and their respective information. Select the proper UEFI file to update your UEFI, and reboot your system after UEFI update process completes.

### 3.3.1 CPU Configuration



#### Active Processor E-Cores

This allows you to select the number of E-Cores to enable in each processor package.  
 NOTE: Number of P-Cores and E-Cores are looked at together. When both are {0,0}, Pcode will enable all cores.

#### CPU C States Support

This allows you to enable CPU C States Support for power saving. It is recommended to keep C3, C6 and C7 all enabled for better power saving.

Configuration options: [Enabled] [Disabled]

#### Enhanced Halt State (C1E)

The option allows you to enable Enhanced Halt State (C1E) for lower power consumption.

Configuration options: [Enabled] [Disabled]

#### Package C State Support

The option allows you to enable CPU, PCIe, Memory, Graphics C State Support for power saving.

Configuration options: [Auto] [Enabled] [Disabled]

## CFG Lock

The option allows you to enable or disable the CFG Lock.

Configuration options: [Enabled] [Disabled]

## Intel Virtualization Technology

Intel Virtualization Technology allows a platform to run multiple operating systems and applications in independent partitions, so that one computer system can function as multiple virtual systems.

Configuration options: [Enabled] [Disabled]

## Intel SpeedStep Technology

Intel SpeedStep technology allows processors to switch between multiple frequencies and voltage points for better power saving and heat dissipation. CPU turbo ratio can be fixed when Intel SpeedStep Technology is set to [Disabled].

Configuration options: [Enabled] [Disabled].

If you install Windows® 10 and want to enable this function, please set this item to [Enabled]. This item will be hidden if the current CPU does not support Intel SpeedStep technology.



*Please note that enabling this function may reduce CPU voltage and lead to system stability or compatibility issues with some power supplies. Please set this item to [Disabled] if above issues occur.*

## Intel Turbo Boost Technology

Intel Turbo Boost Technology enables the processor to run above its base operating frequency when the operating system requests the highest performance state. The default value is [Enabled].

Configuration options: [Enabled] [Disabled]

## CPU Thermal Throttling

CPU Thermal Throttling allows you to enable CPU internal thermal control mechanisms to keep the CPU from overheating.

Configuration options: [Enabled] [Disabled]

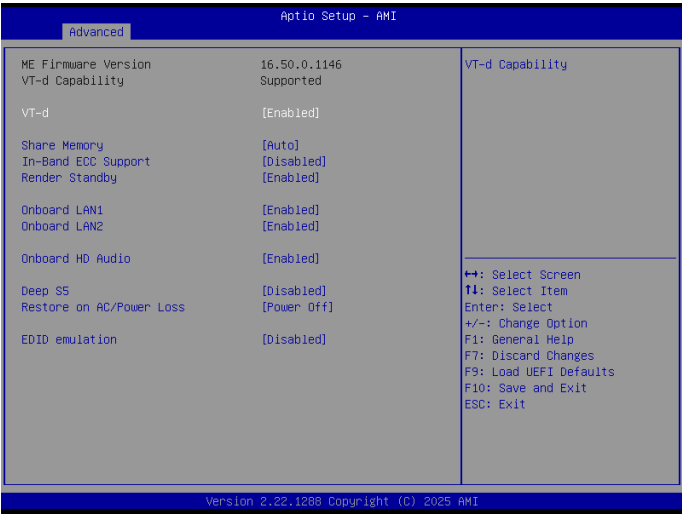
## Power Limit 1

"Power Limit 1 in Milli Watts. BIOS will round to the nearest 1/8W when programming. 0 = no custom override. For 12.50W, enter 12500. Overclocking SKU: Value must be between Max and Min Power Limits (specified by PACKAGE\_POWER\_SKU\_MSR). Other SKUs: This value must be between Min Power Limit and Processor Base Power (TDP) Limit. If value is 0, BIOS will program Processor Base Power (TDP) value."

## Power Limit 2

"Power Limit 2 value in Milli Watts. BIOS will round to the nearest 1/8W when programming. If the value is 0, BIOS will program this value as  $1.25 \times \text{Processor Base Power (TDP)}$ . For 12.50W, enter 12500. Processor applies control policies such that the package power does not exceed this limit."

### 3.3.2 Chipset Configuration



#### VT-d

Intel® Virtualization Technology for Directed I/O helps your virtual machine monitor better utilize hardware by improving application compatibility and reliability, and providing additional levels of manageability, security, isolation, and I/O performance.

Configuration options: [Enabled] [Disabled]

#### Share Memory

Share memory allows you to configure the size of memory that is allocated to the integrated graphics processor when the system boots up.

Configuration options: [Auto] [32M] [64M] [128M] [256M] [512M]

Options vary depending on the memory you use on your motherboard.

#### In-Band ECC Support

This allows you to enable or diable In-Band ECC.

Configuration options: [Enabled] [Disabled]

#### Render Standby

Power down the render unit when the GPU is idle for lower power consumption.

Configuration options: [Enabled] [Disabled]

## Onboard LAN1

This allows you to enable or disable the Onboard LAN1 feature.

Configuration options: [Enabled] [Disabled]

## Onboard LAN2

This allows you to enable or disable the Onboard LAN2 feature.

Configuration options: [Enabled] [Disabled]

## Onboard HD Audio

This allows you to enable or disable the onboard HD audio.

Configuration options: [Enabled] [Disabled]

## Deep S5

Mobile platforms support Deep S5 in DC only and desktop platforms support Deep S5 in AC only. The default value is [Disabled].

Configuration options: [Auto] [Disabled]

## Restore on AC/Power Loss

The option allows you to select the power state after a power failure.

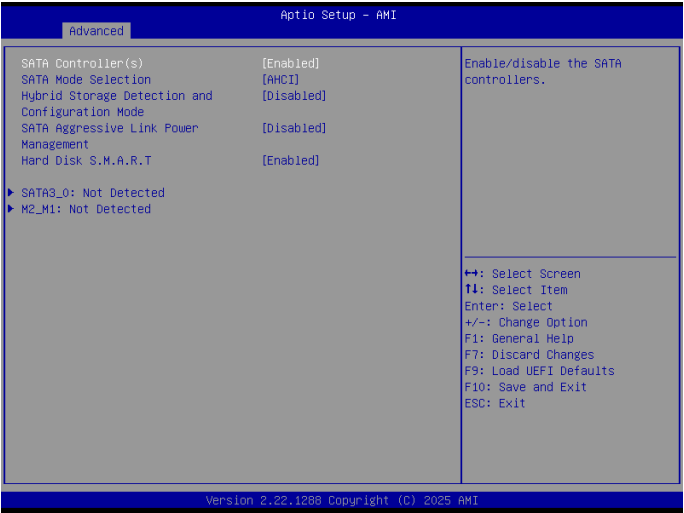
[Power Off] sets the power to remain off when the power recovers.

[Power On] sets the system to start to boot up when the power recovers.

## EDID emulation

This allows you to enable or disable the EDID emulation feature.

### 3.3.3 Storage Configuration



#### SATA Controller(s)

The option allows you to enable or disable the SATA controllers.

Configuration options: [Enabled] [Disabled]

#### SATA Mode Selection

AHCI supports new features that improve performance.

Configuration option: [AHCI]



*AHCI (Advanced Host Controller Interface) supports NCQ and other new features that will improve SATA disk performance.*

#### Hybrid Storage Detection and Configuration Mode

The option allows you to select Hybrid Storage Detection and Configuration Mode.

Configuration options: [Dynamic Configuration for Hybrid Storage Enable] [Disabled]



## SATA Aggressive Link Power Management

SATA Aggressive Link Power Management allows SATA devices to enter a low power state during periods of inactivity to save power. It is supported only by AHCI mode.

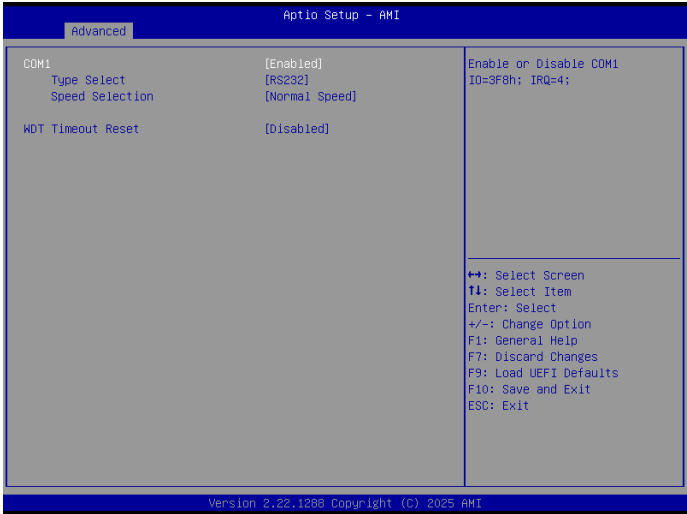
Configuration options: [Enabled] [Disabled]

## Hard Disk S.M.A.R.T.

S.M.A.R.T stands for Self-Monitoring, Analysis, and Reporting Technology. It is a monitoring system for computer hard disk drives to detect and report on various indicators of reliability.

Configuration options: [Enabled] [Disabled]

### 3.3.4 Super IO Configuration



#### COM1 Configuration

Use this to set parameters of COM1.

##### Type Select

Use this to select COM1 port type: [RS232], [RS422] or [RS485].

##### Speed Selection

Use this option to select the COM1 speed: [Normal Speed] or [High Speed].

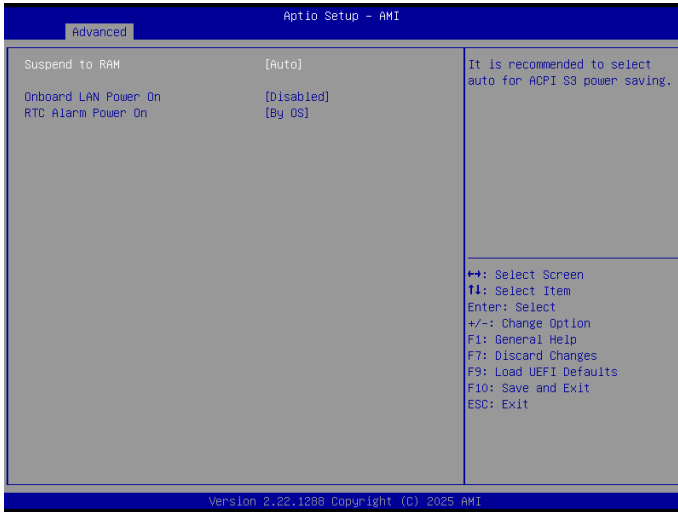
When High Speed is selected and the required driver is installed, COM1 can support a baud rate of 921600.

##### WDT Timeout Reset

Use this to set the Watch Dog Timer.

Configuration options: [Enabled] [Disabled]

### 3.3.5 ACPI Configuration



#### Suspend to RAM

Suspend to RAM allows you to select [Disabled] for ACPI suspend type S1. It is recommended to select [Auto] for ACPI S3 power saving.

Configuration options: [Auto] [Disabled]

#### Onboard LAN Power On

Use this item to enable or disable onboard LAN to turn on the system from the power-soft-off mode.

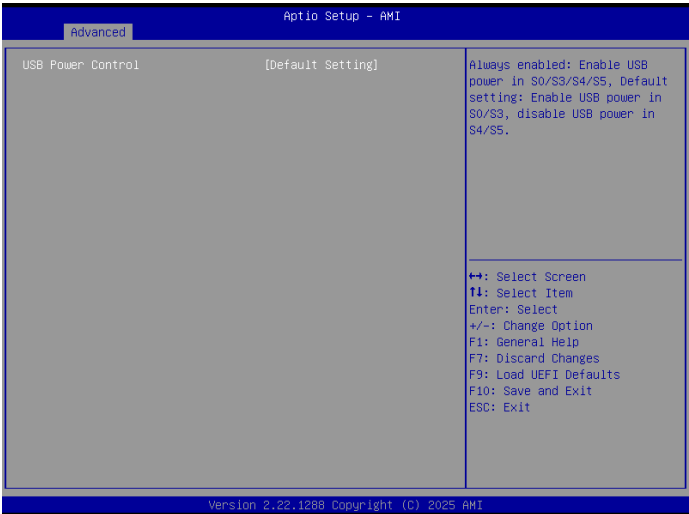
Configuration options: [Enabled] [Disabled]

#### RTC Alarm Power On

RTC Alarm Power On allows the system to be waked up by the real time clock alarm. Set it to By OS to let it be handled by your operating system.

Configuration options: [Enabled] [Disabled] [By OS]

### 3.3.6 USB Configuration

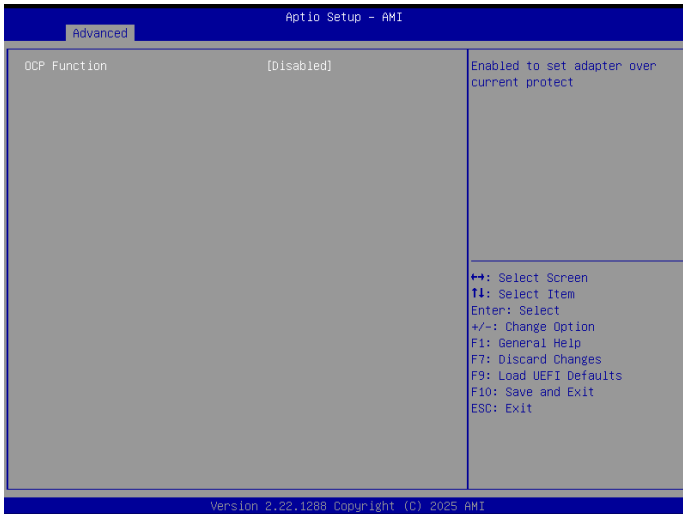


#### USB Power Control

Use this option to control USB power.

Configuration options: [Always Enabled] [Default Setting]

### 3.3.7 Power Configuration



#### OCP Function

Enabled to set adapter over current protect.

### 3.3.8 Trusted Computing



NOTE: Options vary depending on the version of your connected TPM module.

#### Security Device Support

Security Device Support allows you to enable or disable BIOS support for security device. O.S. will not show Security Device. TCG EFI protocol and INT1A interface will not be available.

Configuration options: [Enabled] [Disabled]

#### Active PCR banks

This item displays active PCR Banks.

#### Available PCR Banks

This item displays available PCR Banks.

#### SHA256 PCR Bank

SHA256 PCR Bank allows you to enable or disable SHA256 PCR Bank.

Configuration options: [Enabled] [Disabled]

#### SHA384 PCR Bank

The item allows you to enable or disable SHA384 PCR Bank.

Configuration options: [Enabled] [Disabled]

## Pending Operation

Pending Operation allows you to schedule an Operation for the Security Device.

NOTE: Your computer will reboot during restart in order to change State of the Device.

Configuration options: [None] [TPM Clear]

## Platform Hierarchy

This item allows you to enable or disable Platform Hierarchy.

Configuration options: [Enabled] [Disabled]

## Storage Hierarchy

This item allows you to enable or disable Storage Hierarchy.

Configuration options: [Enabled] [Disabled]

## Endorsement Hierarchy

This item allows you to enable or disable Endorsement Hierarchy.

Configuration options: [Enabled] [Disabled]

## Physical Presence Spec Version

Select this item to tell OS to support PPI spec version 1.2 or 1.3. Please note that some HCK tests might not support version 1.3.

Configuration options: [1.2] [1.3]

## TPM 2.0 InterfaceType

This item allows you to view the Communication Interface to TPM 2.0 Device: CRB or ITS.

## Device Select

This item allows you to select the TPM device to be supported.

[TPM 1.2] restricts support to TPM 1.2 devices.

[TPM 2.0] restricts support to TPM 2.0 devices.

[Auto] supports both TPM 1.2 and TPM 2.0 devices with the default set to TPM 2.0 devices. If TPM 2.0 devices are not found, TPM 1.2 devices will be enumerated.

---

## Onboard TPM

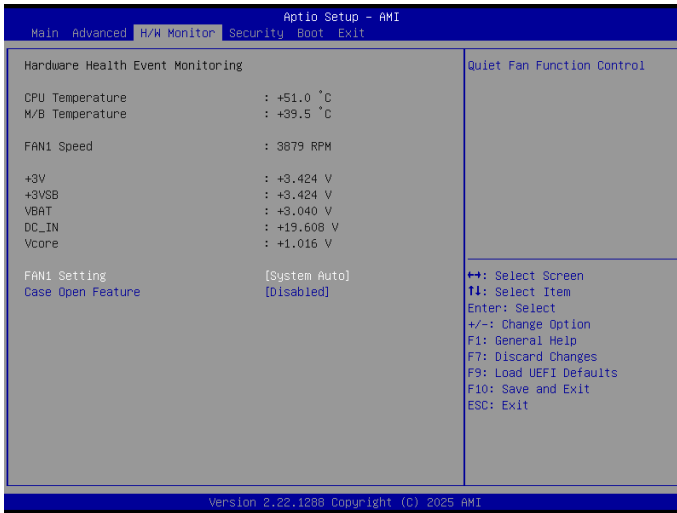
The option enables or disables Intel PTT in ME. Disable this option to use discrete TPM Module.

Configuration options: [Enabled] [Disabled]



### 3.4 Hardware Health Event Monitoring Screen

This section allows you to monitor the status of the hardware on your system, including the parameters of the CPU temperature, motherboard temperature, fan speed, and the critical voltage.



NOTE: Options vary depending on the features of your motherboard.

#### Fan1 Setting

This allows you to set FAN1's speed. The default value is [System Auto].

Configuration options: [System Auto] [Full On] [Automatic Mode].

#### Case Open Feature

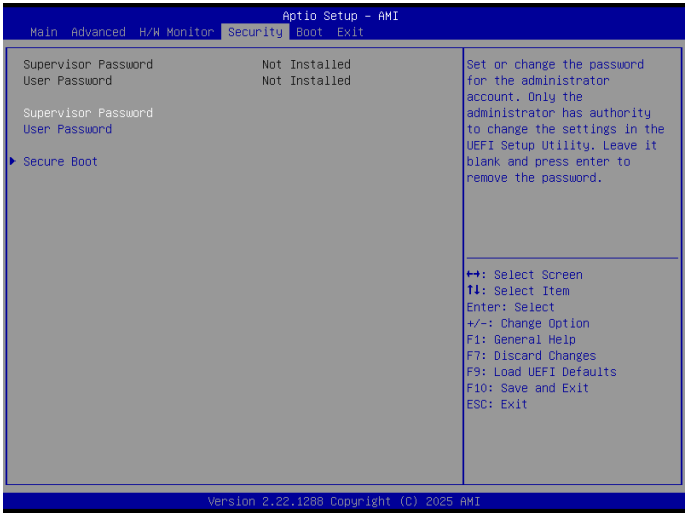
This item allows you to enable or disable case open detection feature. The default is value [Disabled].

#### Clear Status

This option appears only when the case open has been detected. Use this option to keep or clear the record of previous chassis intrusion status.

### 3.5 Security Screen

In this section you may set or change the supervisor/user password for the system. You may also clear the user password.



#### Supervisor Password

Set or change the password for the administrator account. Only the administrator has the authority to change the settings in the UEFI Setup Utility. Leave it blank and press enter to remove the password.

#### User Password

Set or change the password for the user account. Users are unable to change the settings in the UEFI Setup Utility. Leave it blank and press enter to remove the password.

#### Secure Boot

Press [Enter] to configure the Secure Boot Settings. The feature protects the system from unauthorized access and malwares during POST.

### 3.6 Boot Screen

This section displays the available devices on your system for you to configure the boot settings and the boot priority.



#### Boot From Onboard LAN

The item allows the system to be waked up by the onboard LAN.

Configuration options: [Enabled] [Disabled]

#### Setup Prompt Timeout

The item allows you to configure the number of seconds to wait for the UEFI setup utility.

Configuration options: [1] - [65535]

#### Bootup Num-Lock

The item allows you to select whether Num Lock should be turned on or off when the system boots up.

Configuration options: [On] [Off]

#### Full Screen Logo

[Enabled] Select this item to display the boot logo.

[Disabled] Select this item to show normal POST messages.

## 3.7 Exit Screen



### Save Changes and Exit

When you select this option, the following message “Save configuration changes and exit setup?” will pop out. Select [Yes] to save the changes and exit the UEFI SETUP UTILITY.

### Discard Changes and Exit

When you select this option, the following message “Discard changes and exit setup?” will pop out. Select [Yes] to exit the UEFI SETUP UTILITY without saving any changes.

### Discard Changes

When you select this option, the following message “Discard changes?” will pop out. Select [Yes] to discard all the changes.

### Load UEFI Defaults

The item allows you to load UEFI default values for all options. The F9 key can be used for this operation.

### Launch EFI Shell from filesystem device

The item allows you to copy shellx64.efi to the root directory to launch EFI Shell.